

# Recombinant Matrix Metalloproteinase 3 (MMP3) Instruction Manual

**SIPA607Po01**

**Sus scrofa; Porcine (Pig)**

<b>Source</b>	Prokaryotic expression
<b>Host</b>	E.coli
<b>Endotoxin Level</b>	<1.0EU per 1µg (determined by the LAL method)
<b>Subcellular Location</b>	Secreted, Extracellular matrix
<b>Predicted Molecular Mass</b>	56.0kDa
<b>Accurate Molecular Mass</b>	56kDa(Analysis of differences refer to the manual)
<b>Residues &amp; Tags</b>	Tyr18~Cys477 with N-terminal His Tag
<b>Buffer Formulation</b>	20mM Tris, 150mM NaCl, pH8.0, containing 1mM EDTA, 1mM DTT, 0.01% SKL, 5% Trehalose and Proclin300.
<b>Traits</b>	Freeze-dried powder
<b>Purity</b>	> 90%
<b>Isoelectric Point</b>	5.4
<b>Applications</b>	Positive Control; Immunogen; SDS-PAGE; WB.

## SEQUENCE

```
YPV DRAAVDKDDS MDFVQKYLED YYNLTKDVKQ
VVRK DSSLV VKKI QEMQKF LGLEV TGKLD SNTLEV MHKP RCGV PDVGYF
STFP GLPKWR KNDLT YRIVN YTLDL PRSVI DSTIE KALKI WEEVT PLTFS
KISE GEADIM ITFAV REHGD FSPFD GPGKV LAHAY APGPG IYGDA HFDDD
EQWT KDTSV NLFLV AAHEL GHSLG LFHST DSNAL MYPVY NPLTD LARFR
LSQDD VNGIQ SLYG PPPASP PEPVE PTEST PPEPG TPATC DPALS FDAIS
TLRGE ILFFK DRHFWR KSFR RLEPE FHLIS SFWPPL PSSI DAACEV ISKD
TVFIF KGTQF WAIRG NDVQP GYPRSI HTLG FPSTV KKIDA AISDK ETKKT
YFFVE DKYWR FDEKR QSMEP GFPKQ IVEDE PGVEPK VDAV FEAFG FFFYF
NGSSQ FEFD P NAKKV THVLK SNKWLNC
```

## USAGE

Reconstitute in 20mM Tris, 150mM NaCl (pH8.0) to a concentration of 0.1-1.0 mg/mL. Do not vortex.

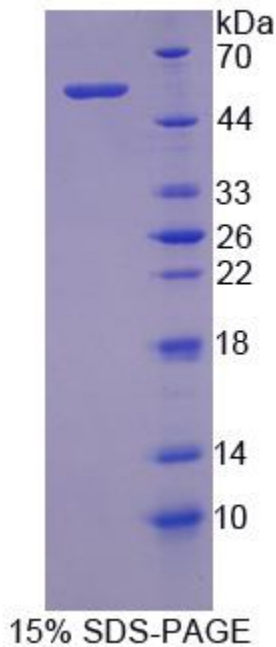
## **STORAGE**

Avoid repeated freeze/thaw cycles. Store at 2-8°C for one month. Aliquot and store at -80°C for 12 months.

## **STABILITY**

The thermal stability is described by the loss rate. The loss rate was determined by accelerated thermal degradation test, that is, incubate the protein at 37°C for 48h, and no obvious degradation and precipitation were observed. The loss rate is less than 5% within the expiration date under appropriate storage condition.

## **Image**



SDS-PAGE Image

## **[IMPORTANT NOTE]**

The kit is designed for research use only, we will not be responsible for any issue if the kit was used in clinical diagnostic or any other procedures.