

# Recombinant Pulmonary Surfactant Associated Protein A1 (SFTPA1) Instruction Manual

## SIPA279Ra01

### *Rattus norvegicus* (Rat)

|                                 |                                                                                                     |
|---------------------------------|-----------------------------------------------------------------------------------------------------|
| <b>Source</b>                   | Prokaryotic expression                                                                              |
| <b>Host</b>                     | E.coli                                                                                              |
| <b>Endotoxin Level</b>          | <1.0EU per 1µg (determined by the LAL method)                                                       |
| <b>Subcellular Location</b>     | Secreted                                                                                            |
| <b>Predicted Molecular Mass</b> | 56.6kDa                                                                                             |
| <b>Accurate Molecular Mass</b>  | 54kDa(Analysis of differences refer to the manual)                                                  |
| <b>Residues &amp; Tags</b>      | Asn21~Phe248 with N-terminal His and GST Tag                                                        |
| <b>Buffer Formulation</b>       | 20mM Tris, 150mM NaCl, pH8.0, containing 1mM EDTA, 1mM DTT, 0.01% SKL, 5% Trehalose and Proclin300. |
| <b>Traits</b>                   | Freeze-dried powder                                                                                 |
| <b>Purity</b>                   | > 95%                                                                                               |
| <b>Isoelectric Point</b>        | 5.6                                                                                                 |
| <b>Applications</b>             | Positive Control; Immunogen; SDS-PAGE; WB.                                                          |

### SEQUENCE

```
                NVTDV CAGSP  GIPGAPGNHG  LPGRDGRDGV
KGDGPPPGPM  GPPGGMPGLP  GRDGLPGAPG  APGERGDKGE  PGERGLPGFP
AYLDEELQTE  LYEIKHQILQ  TMGVLSLQGS  MLSVGDKVFS  TNGQSVNFDT
IKEMCTRAGG  NIAVPRTPPEE  NEIASIAKK  YNNYVYLGMI  EDQTPGDFHY
LDGASVNYTN  WYPGEPRGQG  KEKCVEMYTD  GTWDRGCLQ  YRLAVCEF
```

### USAGE

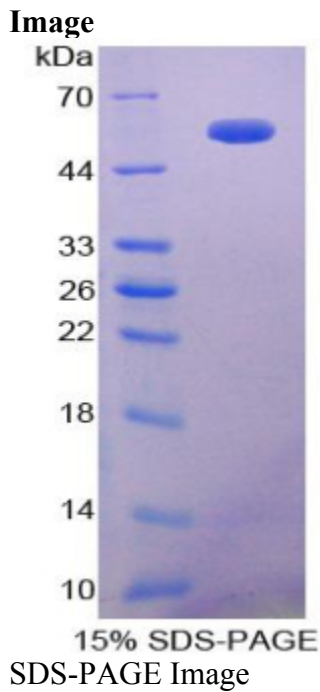
Reconstitute in ddH<sub>2</sub>O to a concentration of 0.1-0.5 mg/mL. Do not vortex.

### STORAGE

Avoid repeated freeze/thaw cycles. Store at 2-8°C for one month. Aliquot and store at -80°C for 12 months.

## STABILITY

The thermal stability is described by the loss rate. The loss rate was determined by accelerated thermal degradation test, that is, incubate the protein at 37°C for 48h, and no obvious degradation and precipitation were observed. The loss rate is less than 5% within the expiration date under appropriate storage condition.



## **[IMPORTANT NOTE]**

The kit is designed for research use only, we will not be responsible for any issue if the kit was used in clinical diagnostic or any other procedures.