

Recombinant Phospholipase A2 Group VII (LpPLA2) Instruction Manual

SIPA201Hu03

Homo sapiens (Human)

Source	Prokaryotic expression
Host	E.coli
Endotoxin Level	<1.0EU per 1µg (determined by the LAL method)
Subcellular Location	Extracellular matrix
Predicted Molecular Mass	61.5kDa
Accurate Molecular Mass	65kDa(Analysis of differences refer to the manual)
Residues & Tags	Phe22~Asn441 with Two N-terminal Tags, His-tag and SUMO-tag
Buffer Formulation	PBS, pH7.4, containing 0.01% SKL, 5% Trehalose.
Traits	Freeze-dried powder
Purity	> 80%
Isoelectric Point	7.1
Applications	Positive Control; Immunogen; SDS-PAGE; WB.

SEQUENCE

```
FDWQYINPV AHMKSSAWVN KIQVLMMAAS
FGQTKIPRGN GPYSVGCTDL MFDHTNKGTF LRLYYPSQDN DRLDTLWIPN
KEYFWGLSKF LGTHWLMGNI LRLLFGSMTT PANWNSPLRP GEKYPLVVFS
HGLGAFRTLY SAIGIDLASH GFIVA AVEHR DRASATYYF KDQSAAEIGD
KSWLYLRTLK QEEETHIRNE QVRQRAKECS QALSLILDID HGKPVKNALD
LKFDMEQLKD SIDREKIAVI GHSFGGATVI QTLSEDQRFR CGIALDAWMF
PLGDEVYSRI PQPLFFINSE YFQYPANIIK MKKCYS PDKE RKMITIRGSV
HQNFA DFTFA TGKIIGHMLK LKGDIDS NVA IDLSNKASLA FLQKHLGLHK
DFDQW DCLIE GDDENLIPGT NINTTNQHIM LQNSSGIEKY N
```

USAGE

Reconstitute in 10mM PBS (pH7.4) to a concentration of 0.1-1.0 mg/mL. Do not vortex.

STORAGE

Avoid repeated freeze/thaw cycles. Store at 2-8°C for one month. Aliquot and store at -80°C for 12 months.

STABILITY

The thermal stability is described by the loss rate. The loss rate was determined by accelerated thermal degradation test, that is, incubate the protein at 37°C for 48h, and no obvious degradation and precipitation were observed. The loss rate is less than 5% within the expiration date under appropriate storage condition.

Image

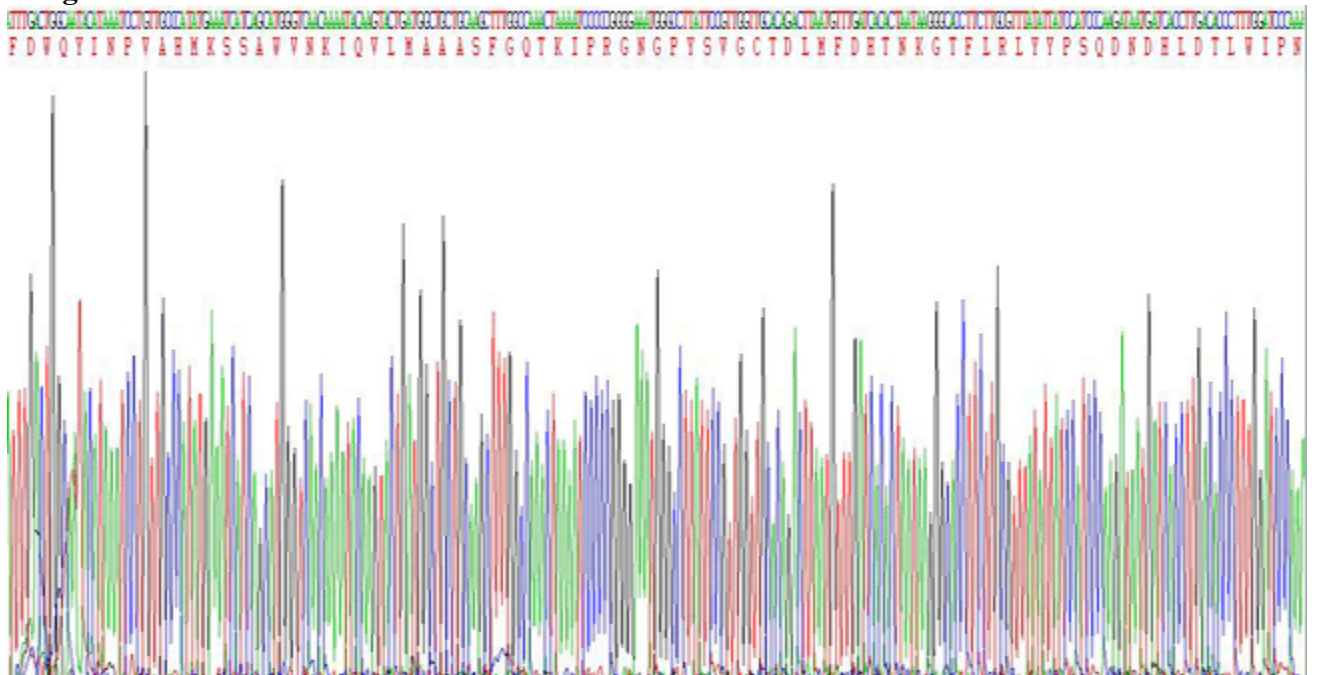


Figure. SDS-PAGE

[IMPORTANT NOTE]

The kit is designed for research use only, we will not be responsible for any issue if the kit was used in clinical diagnostic or any other procedures.

