

# Recombinant Interleukin 1 Beta (IL1b) Instruction Manual

SIPA147Bo02

**Bos taurus; Bovine (Cattle)**

<b>Source</b>	Prokaryotic expression
<b>Host</b>	E.coli
<b>Endotoxin Level</b>	<1.0EU per 1µg (determined by the LAL method)
<b>Subcellular Location</b>	Secreted, Lysosome, Cytoplasm
<b>Predicted Molecular Mass</b>	34.7kDa
<b>Accurate Molecular Mass</b>	35kDa(Analysis of differences refer to the manual)
<b>Residues &amp; Tags</b>	Met1~Pro266 with N-terminal His Tag
<b>Buffer Formulation</b>	20mM Tris, 150mM NaCl, pH8.0, containing 1mM EDTA, 1mM DTT, 0.01% SKL, 5% Trehalose and Proclin300.
<b>Traits</b>	Freeze-dried powder
<b>Purity</b>	> 97%
<b>Isoelectric Point</b>	5.5
<b>Applications</b>	Positive Control; Immunogen; SDS-PAGE; WB.

## SEQUENCE

```
MATVPEPINE MMAYYSDENE LLFEADDPKQ MKSCIQHLDL GSMGDGNIQL  
QISHQFYNKS FRQVVSIVA MEKLRNSAYA HVFHDDDLRS ILSFIFEEEP  
VIFETSSDEF LCDAPVQSIK CKLQDREQS LVLASPCVLK ALHLLSQEMN  
REVVFCMSFV QGEERDNKIP VALGIKDKNL YLSCVKKGDT PTLQLEEVDP  
KVYPKRNMEK RFVFKTEIK NTVEFESVLY PNWYISTSQI EERPVLGHF  
RGGQDITDFR METLSP
```

## USAGE

Reconstitute in 20mM Tris, 150mM NaCl (pH8.0) to a concentration of 0.1-1.0 mg/mL.  
Do not vortex.

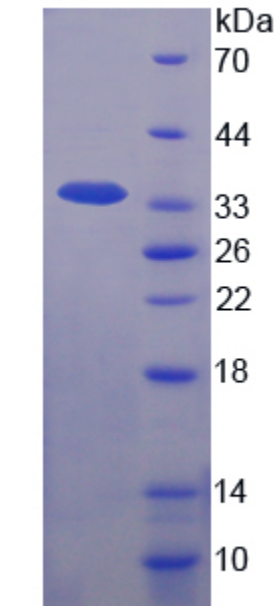
## STORAGE

Avoid repeated freeze/thaw cycles. Store at 2-8°C for one month. Aliquot and store at -80°C for 12 months.

## **STABILITY**

The thermal stability is described by the loss rate. The loss rate was determined by accelerated thermal degradation test, that is, incubate the protein at 37°C for 48h, and no obvious degradation and precipitation were observed. The loss rate is less than 5% within the expiration date under appropriate storage condition.

## **Image**



15% SDS-PAGE

SDS-PAGE Image

## **[IMPORTANT NOTE]**

The kit is designed for research use only, we will not be responsible for any issue if the kit was used in clinical diagnostic or any other procedures.