

# **Native Albumin (ALB) Instruction Manual**

**SHPB014Po01**

**Sus scrofa; Porcine (Pig)**

## **FORMULA**

## **USAGE**

Reconstitute in 10mM PBS (pH7.4) to a concentration of 0.1-1.0 mg/mL. Do not vortex.

## **STORAGE**

Avoid repeated freeze/thaw cycles. Store at 2-8°C for one month. Aliquot and store at -80°C for 12 months.

## **STABILITY**

The thermal stability is described by the loss rate. The loss rate was determined by accelerated thermal degradation test, that is, incubate the protein at 37°C for 48h, and no obvious degradation and precipitation were observed. The loss rate is less than 5% within the expiration date under appropriate storage condition.

## **Image**

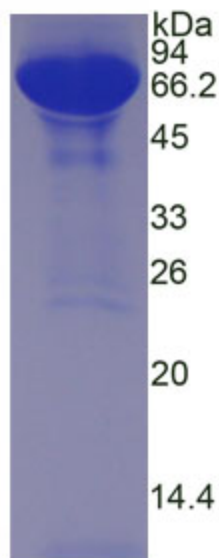


Figure. SDS-PAGE

**[IMPORTANT NOTE]**

The kit is designed for research use only, we will not be responsible for any issue if the kit was used in clinical diagnostic or any other procedures.

|                                 |   |
|---------------------------------|---|
| <b>Source</b>                   | Natural extract   |
| <b>Subcellular Location</b>     | n/a   |
| <b>Host</b>                     | Pig   |
| <b>Predicted Molecular Mass</b> | 68kDa   |
| <b>Accurate Molecular Mass</b>  | 68kDa(Analysis of differences refer to the manual)                      |
| <b>Buffer Formulation</b>       | PBS, pH7.4, containing 0.01% SKL, 1mM DTT, 5% Trehalose and Proclin300. |
| <b>Traits</b>                   | Freeze-dried powder   |
| <b>Purity</b>                   | > 90%   |
| <b>Isoelectric Point</b>        | n/a   |
| <b>Applications</b>             | Positive Control; Immunogen; SDS-PAGE; WB.                              |