

Eukaryotic Interleukin 4 Induced Protein 1 (IL4I1) Instruction Manual

SFPH666Hu61

Homo sapiens (Human)

| | |
|---------------------------------|---|
| Source | Eukaryotic expression |
| Host | CHO Cell |
| Endotoxin Level | <1.0EU per 1µg (determined by the LAL method) |
| Subcellular Location | Lysosome |
| Predicted Molecular Mass | 62.3kDa |
| Accurate Molecular Mass | 90kDa(Analysis of differences refer to the manual) |
| Residues & Tags | Gln22~His567 with N-terminal His Tag and C-terminal Fc Region of Human IgG1 |
| Buffer Formulation | 20mM Tris, 150mM NaCl, pH8.0, containing 1mM EDTA, 1mM DTT, 0.01% SKL, 5% Trehalose and Proclin300. |
| Traits | Freeze-dried powder |
| Purity | > 97% |
| Isoelectric Point | 9.0 |
| Applications | Positive Control; Immunogen; SDS-PAGE; WB. |

SEQUENCE

```
QDWAERSQ DPF EKCMQDP DYEQLLKVVT
WGLNRTLKPQ RVIVVGAGVA GLVAAKVLS D AGHKVTILEA DNRIGGRIFT
YRDQNTGWIG ELGAMRMPSS HRILHKLCQG LGLNLTKFTQ YDKNTWTEVH
EVKLRNYVVE KVPEKLG YAL RPQEKGHSPE DIYQMALNQA LKDLKALGCR
KAMKKFERHT LLEYLLGEGN LSRPAVQLLG DVMS EDGFFY LSFAEALRAH
SCLSDRLQYS RIVGGWDL LP RALLSSLSGL VLLNAPVVAM TQGPHDVHVQ
IETSPARNL KVLKADVLL TASGPAVKRI TFS PPLPRHM QEALRR LHVY
PATKVFLSFR RPFWREEHIE GGHSNTDRPS RMIFYPPPRE GALLLASYTW
SDAAAFAAGL SREEALRLAL DDVAALHGPV VRQLWDGTGV VKRWAEDQHS
QGGFVVQPPA LWQTEKDDWT VPYGRIYFAG EHTAYPHGWV ETAVKSALRA
AIKINSRKGP ASDTASPEGH ASDMEGQGHV HGVASSPSHD LAKEEGSHPP
VQQQLSLQNT THTRTSH
```

USAGE

Reconstitute in 20mM Tris, 150mM NaCl (pH8.0) to a concentration of 0.1-1.0 mg/mL. Do not vortex.

STORAGE

Avoid repeated freeze/thaw cycles. Store at 2-8°C for one month. Aliquot and store at -80°C for 12 months.

STABILITY

The thermal stability is described by the loss rate. The loss rate was determined by accelerated thermal degradation test, that is, incubate the protein at 37°C for 48h, and no obvious degradation and precipitation were observed. The loss rate is less than 5% within the expiration date under appropriate storage condition.

Image

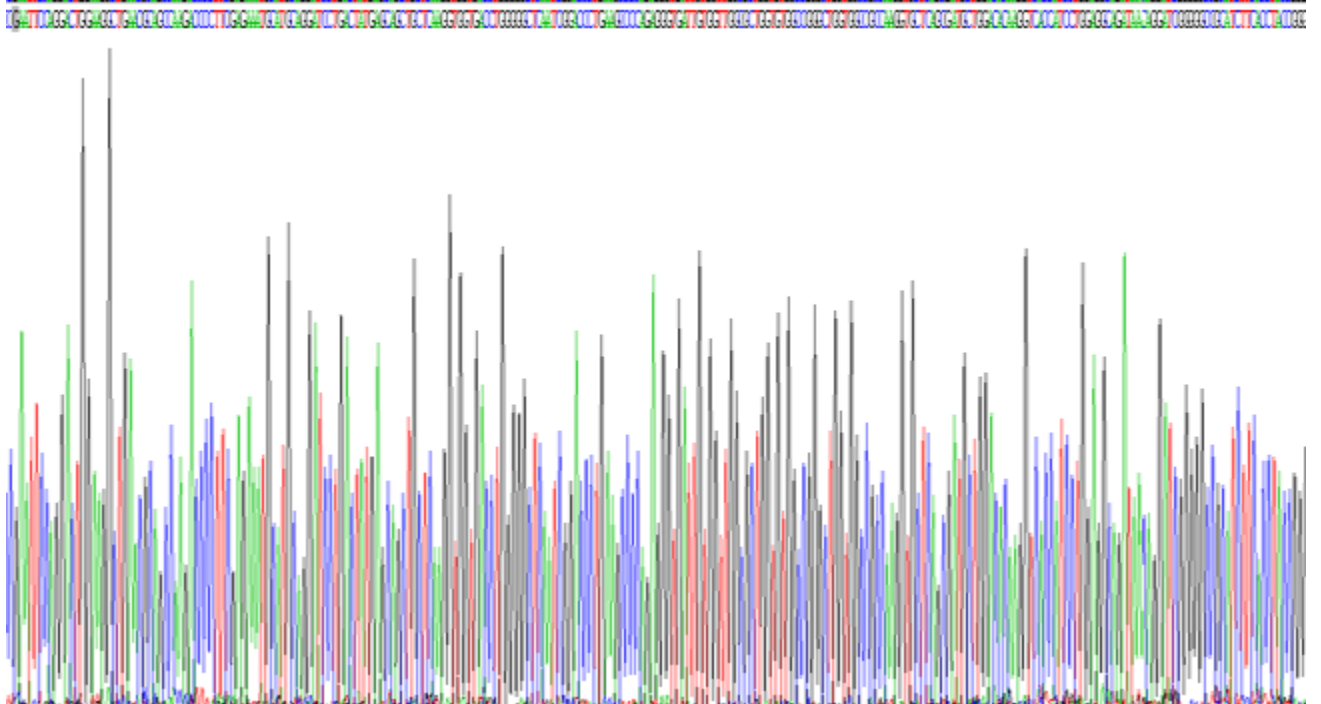


Figure. SDS-PAGE

[IMPORTANT NOTE]

The kit is designed for research use only, we will not be responsible for any issue if the kit was used in clinical diagnostic or any other procedures.