

Eukaryotic Platelet/Endothelial Cell Adhesion Molecule (PECAM1) Instruction Manual

SFPA614Ra61

Rattus norvegicus (Rat)

Source	Eukaryotic expression
Host	293F cell
Endotoxin Level	<1.0EU per 1µg (determined by the LAL method)
Subcellular Location	Membrane
Predicted Molecular Mass	66.2kDa
Accurate Molecular Mass	120kDa(Analysis of differences refer to the manual)
Residues & Tags	Gln18~Lys589 with N-terminal His Tag
Buffer Formulation	20mM Tris, 150mM NaCl, pH8.0, containing 1mM EDTA, 1mM DTT, 0.01% SKL, 5% Trehalose and Proclin300.
Traits	Freeze-dried powder
Purity	> 90%
Isoelectric Point	6.9
Applications	Positive Control; Immunogen; SDS-PAGE; WB.

SEQUENCE

```
QEN SFTINSIHME SRPSWEVSNG QKLTQLCLVD
ISTTSKSRPQ HQVLFYKDDA LVYNVSSSEH TESFVIPQSR VFHAGKYKCT
VILNSKEKTT IEYQLTVNGV PMPEVTVDKK EVTEGGIVTV NCSMQEEKPP
IYFKIEKVEL GTKNVKLSRE KTSNMNFVLI EFPIEEQDHL LVFRCQAGVL
SGIKMQTSEF IRSEYVTVQE FFSTPKFQIQ PPEMIEGNQ LHIKCSVQVA
HLAQEFPEII IQKDKAIVAT SKQSKEAVYS VMALVEHSGH YTCKVESNRI
SKASSILVNI TELFPRPKLE LSSSRLDQGE MLDLSCSVSG APVANFTIQK
EETVLSQYQN FSKIAEERDS GLYSCTAGIG KVVKRSNLVP VQVCEMLSKP
RIFHDAKFEI IKGQIIGISC QSVNGTAPIT YRLLRAKSNF QTVQKNSNDP
VTFTDKPTRD MEYQCIVDNC HSHPEVRSEI LRVKVIAPVD EVTISILSGN
DVQSGDEMVL RCSVKEGTGP VTFQFYKEKE GRPFHEETVN DTQVFWHHEQ
TSKEQEGQYY CTAFNRASIV TSLRSGPLTV RVFLAPWKK
```

USAGE

Reconstitute in ddH₂O to a concentration of 0.1-1.0 mg/mL. Do not vortex.

STORAGE

Avoid repeated freeze/thaw cycles. Store at 2-8°C for one month. Aliquot and store at -80°C for 12 months.

STABILITY

The thermal stability is described by the loss rate. The loss rate was determined by accelerated thermal degradation test, that is, incubate the protein at 37°C for 48h, and no obvious degradation and precipitation were observed. The loss rate is less than 5% within the expiration date under appropriate storage condition.

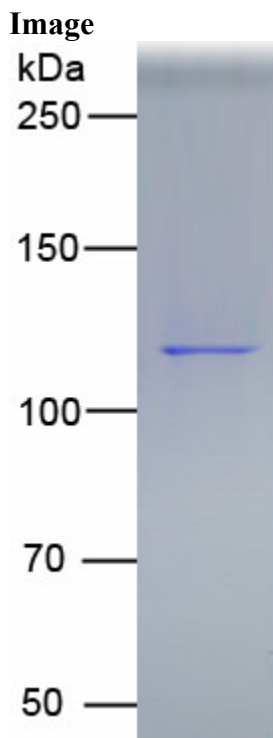


Figure. SDS-PAGE

[IMPORTANT NOTE]

The kit is designed for research use only, we will not be responsible for any issue if the kit was used in clinical diagnostic or any other procedures.