

Eukaryotic Interleukin 1 Beta (IL1b) Instruction Manual

SFPA147Ra61

Rattus norvegicus (Rat)

Source	Eukaryotic expression
Host	293F Cell
Endotoxin Level	<1.0EU per 1µg (determined by the LAL method)
Subcellular Location	Secreted, Lysosome
Predicted Molecular Mass	18.2kDa
Accurate Molecular Mass	20kDa(Analysis of differences refer to the manual)
Residues & Tags	Val117~Ser268 with N-terminal His Tag
Buffer Formulation	PBS, pH7.4, containing 0.01% SKL, 1mM DTT, 5% Trehalose and Proclin300.
Traits	Freeze-dried powder
Purity	> 95%
Isoelectric Point	8.4
Applications	Positive Control; Immunogen; SDS-PAGE; WB.

SEQUENCE

```
          VPIR QLHCRLRDEQ QKCLVLSDPK ELKALHLNGQ  
NISQQVVFMS SFVQGETSND KIPVALGLKG LNLVLSVCMK DGTPTLQLES  
VDPKQYPKKK MEKRFVFNKI EVKTKVEFES AQFPNWYIST SQAHRPVFL  
GNSNGRDIVD FTMEPVSS
```

USAGE

Reconstitute in 10mM PBS (pH7.4) to a concentration of 0.1-1.0 mg/mL. Do not vortex.

STORAGE

Avoid repeated freeze/thaw cycles. Store at 2-8°C for one month. Aliquot and store at -80°C for 12 months.

STABILITY

The thermal stability is described by the loss rate. The loss rate was determined by accelerated thermal degradation test, that is, incubate the protein at 37°C for 48h, and no obvious degradation and precipitation were observed. The loss rate is less than 5% within the expiration date under appropriate storage condition.

Image

```
ATTTGGGAGCGATCAAGTCGGTGGGACAGCGGATCGGTGGTGGAGTGGGCTGTTTATTTGGGCAAGTACAGGATTTGTACTGAGAGGGCCAGAGCAATTTGGTTGGTTAGGGCAATTGATGTTGGTGGAGGCTGTCTGTTGGGAGGCTTCATGAGGGTGT  
VP I R Q L H C R L R D E Q Q K C L V L S D P C E L K A L H L N G Q N I S Q Q V V F S H S F V Q G E T S N D K I P V A L G L X G K N I V L S C V H K D G T P T L Q L E S V D P
```

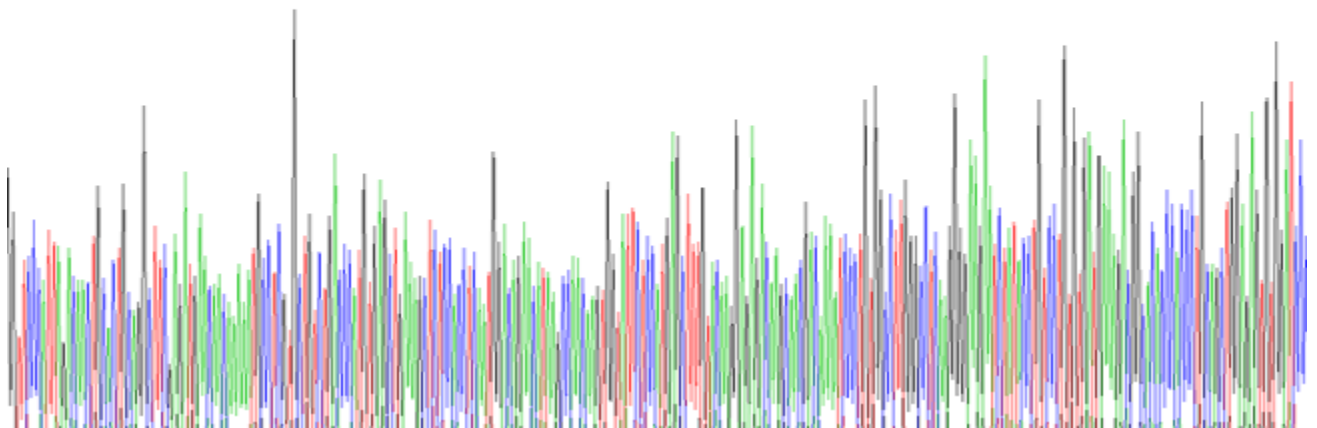


Figure. Gene Sequencing (Extract)

Image

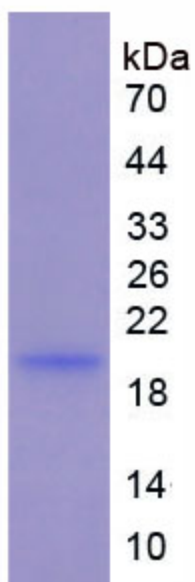


Figure. SDS-PAGE

[IMPORTANT NOTE]

The kit is designed for research use only, we will not be responsible for any issue if the kit was used in clinical diagnostic or any other procedures.