

Eukaryotic Matrix Metalloproteinase 13 (MMP13) Instruction Manual

SFPA066Ra61

Rattus norvegicus (Rat)

Source	Eukaryotic expression
Host	293F cell
Endotoxin Level	<1.0EU per 1ug (determined by the LAL method)
Subcellular Location	Secreted, Extracellular matrix
Predicted Molecular Mass	53.4kDa
Accurate Molecular Mass	60kDa(Analysis of differences refer to the manual)
Residues & Tags	Leu14~Cys466 with N-terminal His Tag
Buffer Formulation	20mM Tris, 150mM NaCl, pH8.0, containing 1mM EDTA, 1mM DTT, 5% Trehalose and Proclin300.
Traits	Freeze-dried powder
Purity	> 97%
Isoelectric Point	5.1
Applications	Positive Control; Immunogen; SDS-PAGE; WB.

SEQUENCE

```
LPLPYGD DDDDDLSEED LEFAEHYLKS YYHPVTLAGI
LKKSTVTSTV DRLREMQSFF GLDVTGKLDD PTLDIMRKPR CGVPDVGYYN
VFPRTLKWSQ TNLTYRIVNY TPDISHSEVE KAFRKAFKVV SDVTPLNFTR
IHDGTADIMI SFGTKEHGDF YPFDGPSGLL AHAFPPGPNL GGDAHFDDDE
TWTSSSKGYN LFIVAAHELG HSLGLDHSKD PGALMFPIYT YTGKSHFMLP
DDDVGIIQSL YGPGDEPNP KHPKTPEKCD PALSldaITS LRGETMIFKD
RFFWRLHPQQ VEPELFLTks FWPELpNHVD AAYEHPSRDL MFIFRGRKFW
ALNGYDIMEG YPRKISDLGF PKEVKRLSAA VHFEDTGKTL FFSGNHWSY
DDANQTMdKd YPRLIIEEFp GIGDKVDAVY EKNgyIYFFN GPIQFEYSIW
SNRIVRVMPt NSLLWC
```

USAGE

Reconstitute in PBS or others.

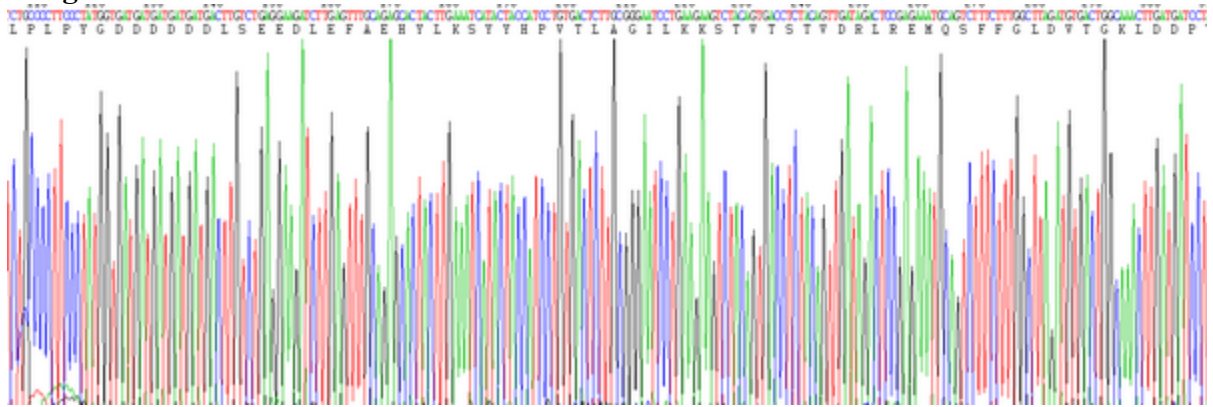
STORAGE

Avoid repeated freeze/thaw cycles. Store at 2-8°C for one month. Aliquot and store at -80°C for 12 months.

STABILITY

The thermal stability is described by the loss rate. The loss rate was determined by accelerated thermal degradation test, that is, incubate the protein at 37°C for 48h, and no obvious degradation and precipitation were observed. The loss rate is less than 5% within the expiration date under appropriate storage condition.

Image



SDS-PAGE Image

[IMPORTANT NOTE]

The kit is designed for research use only, we will not be responsible for any issue if the kit was used in clinical diagnostic or any other procedures.