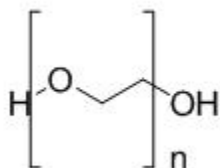


BSA Conjugated Polyethylene Glycol (PEG) Instruction Manual

SDPX600Ge11

Pan-species (General)

FORMULA



USAGE

Reconstitute in PBS (pH7.4) to a concentration of 0.1-1.0 mg/mL. Do not vortex.

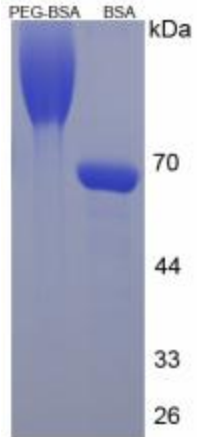
STORAGE

Avoid repeated freeze/thaw cycles. Store at 2-8°C for one month. Aliquot and store at -80°C for 12 months.

STABILITY

The thermal stability is described by the loss rate. The loss rate was determined by accelerated thermal degradation test, that is, incubate the protein at 37°C for 48h, and no obvious degradation and precipitation were observed. The loss rate is less than 5% within the expiration date under appropriate storage condition.

Image



SDS-PAGE Image

[IMPORTANT NOTE]

The kit is designed for research use only, we will not be responsible for any issue if the kit was used in clinical diagnostic or any other procedures.

| | |
|--------------------------------|--------------------------|
| Source | Protein Conjugation |
| Original Molecular Mass | 62.1Da |
| Buffer Formulation | PBS, pH7.4. |
| Traits | Freeze-dried powder |
| Purity | > 90% |
| Isoelectric Point | n/a |
| Applications | Immunogen; SDS-PAGE; WB. |