

## Mouse Anti-Albumin (Loading Control , animal-free)antibody

SLM-77001M

<b>Product Name</b>	Albumin(Loading Control, animal-free)
<b>Chinese Name</b>	白蛋白（内参, 无动物源）单克隆抗体
<b>Alias</b>	ALB; Serum albumin; ALBU_HUMAN; Albumin (32 AA); Albumin (AA 34); Analbuminemia; Bisalbuminemia; Cell growth inhibiting protein 42; DKFZp779N1935; Dysalbuminemic hyperthyroxinemia; Growth inhibiting protein 20; HSA; Hyperthyroxinemia dysalbuminemic; PRO0883; PRO0903; PRO1341; PRO2044; PRO2619; Serum albumin. 人血清白蛋白
<b>Product Type</b>	Internal reference anti
<b>Research Area</b>	Cell biology immunology
<b>Immunogen Species</b>	Mouse
<b>Clonality</b>	Monoclonal
<b>Clone NO.</b>	3F4
<b>React Species</b>	Human, (predicted: Mouse, Rat, Pig, ) WB=1:500-2000
<b>Applications</b>	not yet tested in other applications. optimal dilutions/concentrations should be determined by the end user.
<b>Theoretical molecular weight</b>	69kDa
<b>Cellular localization</b>	Secretory protein
<b>Form</b>	Liquid
<b>Concentration</b>	1mg/ml
<b>immunogen</b>	human Serum albumin
<b>Lsotype</b>	IgG
<b>Purification</b>	affinity purified by Protein A
<b>Buffer Solution</b>	1M TBS(pH7.4) with 1% BSA, 3% Proclin300 and 50% Glycerol.
<b>Storage</b>	Shipped at 4°C. Store at -20 °C for one year. Avoid repeated freeze/thaw cycles.

**Attention**

This product as supplied is intended for research use only, not for use in human, therapeutic or diagnostic applications.

**PubMed**

[PubMed](#)

Albumin is a soluble, monomeric protein which comprises about one-half of the blood serum protein. Albumin functions primarily as a carrier protein for steroids, fatty acids, and thyroid hormones and plays a role in stabilizing extracellular fluid volume. Mutations in this gene on chromosome 4 result in various anomalous proteins. Albumin is a globular unglycosylated serum protein of molecular weight 65,000. The human albumin gene is 16,961 nucleotides long from the putative 'cap' site to the first poly(A) addition site. It is split into 15 exons which are symmetrically placed within the 3 domains that are thought to have arisen by triplication of a single primordial domain. Albumin is synthesized in the liver as prealbumin which has an N-terminal peptide that is removed before the nascent protein is released from the rough endoplasmic reticulum. The product, proalbumin, is in turn cleaved in the Golgi vesicles to produce the secreted albumin.

**Function:**

Serum albumin, the main protein of plasma, has a good binding capacity for water, Ca(2+), Na(+), K(+), fatty acids, hormones, bilirubin and drugs. Its main function is the regulation of the colloidal osmotic pressure of blood. Major zinc transporter in plasma, typically binds about 80% of all plasma zinc.

**Product Detail**

**Subcellular Location:**

Secreted.

**Tissue Specificity:**

Plasma.

**Post-translational modifications:**

Kenitra variant is partially O-glycosylated at Thr-620. It has two new disulfide bonds Cys-600 to Cys-602 and Cys-601 to Cys-606.

Glycated in diabetic patients.

Phosphorylation sites are present in the extracellular medium.

Acetylated on Lys-223 by acetylsalicylic acid.

**DISEASE:**

Defects in ALB are a cause of familial dysalbuminemic hyperthyroxinemia (FDH) [MIM:103600]. FDH is a form of euthyroid hyperthyroxinemia that is due to increased affinity of ALB for T(4). It is the most common cause of inherited euthyroid hyperthyroxinemia in Caucasian population.

**Similarity:**

Belongs to the ALB/AFP/VDB family. Contains 3 albumin domains.

**SWISS:**  
P02769

**Gene ID:**  
280717

**Database links:**

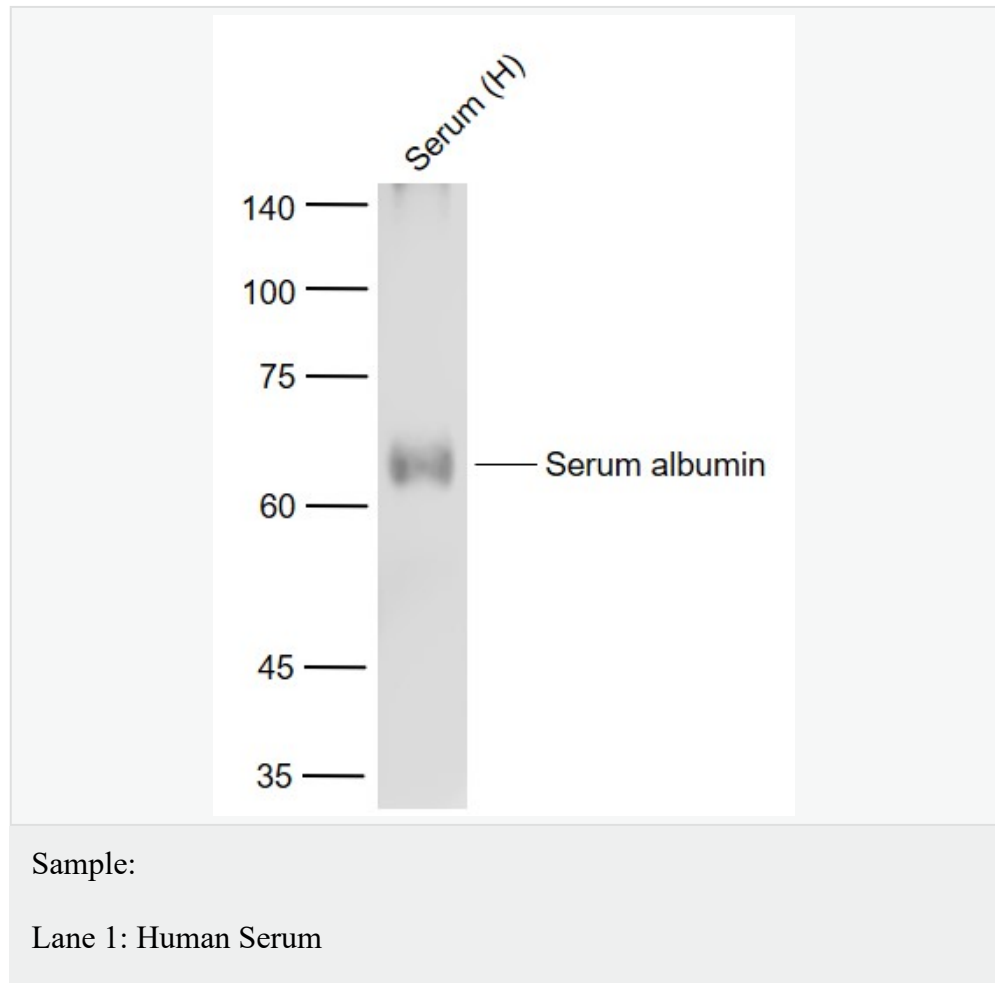
[Entrez Gene: 213](#) Human

[Omid: 103600](#) Human

[SwissProt: P02768](#) Human

[Unigene: 418167](#) Human

**Product Picture**





SunLong Biotech Co.,LTD

Tel: 0086-571-56623320 Fax:0086-571-56623318

E-mail:sales@sunlongbiotech.com

www.sunlongbiotech.com

Primary: Anti-Serum albumin (SLM-77001M) at 1/1000 dilution

Secondary: IRDye800CW Goat Anti-Mouse IgG at 1/20000 dilution

Predicted band size: 69 kD

Observed band size: 65 kD