

## Rabbit Anti-Myoglobin antibody

SLM-61245R

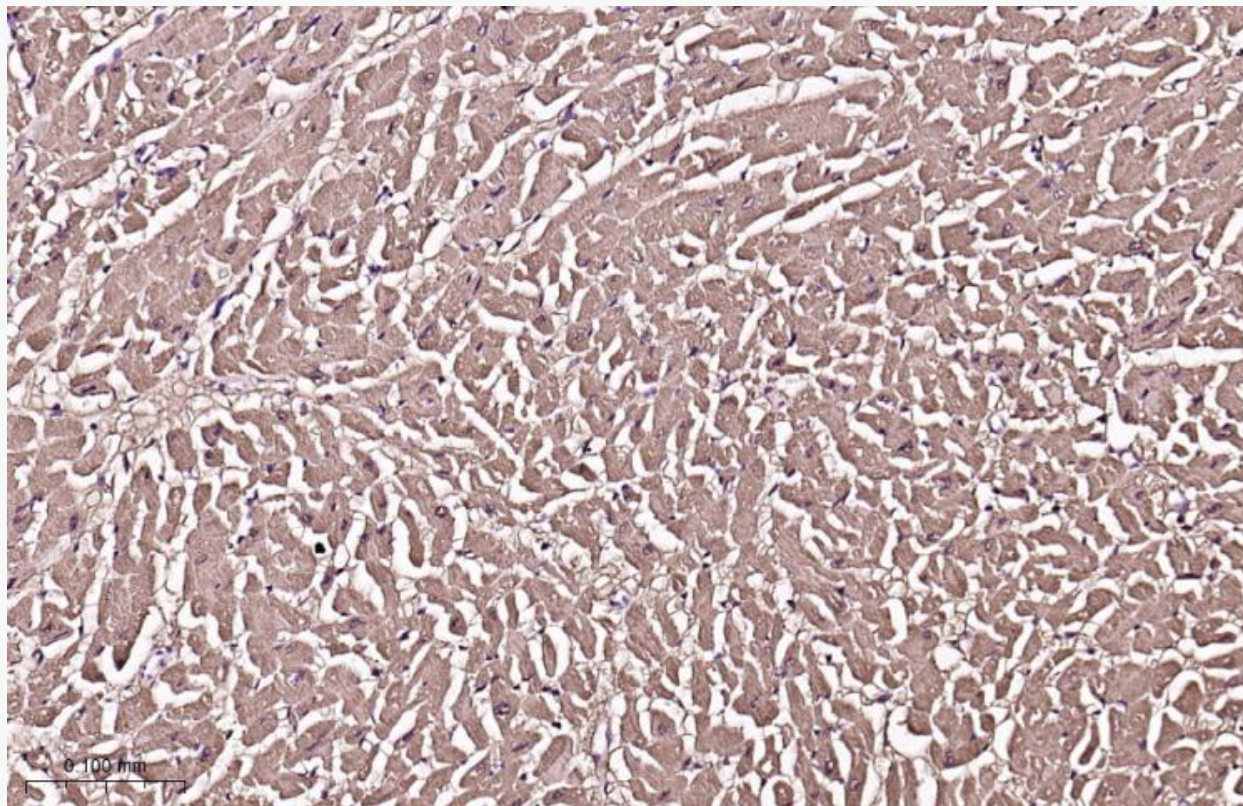
<b>Product Name</b>	Rabbit Anti-Myoglobin antibody
<b>Chinese Name</b>	肌红蛋白 Recombinant rabbit monoclonal anti
<b>Alias</b>	MB; MGC13548; MYG; Myoglobin; PVALB.
<b>Immunogen Species</b>	Rabbit
<b>Clonality</b>	Recombinant
<b>React Species</b>	Human,Mouse,Rat
<b>Applications</b>	WB=1:500-2000,IHC-P=1:100-500,IHC-F=1:100-500,ICC/IF=1:50-200,IF=1:100-500,IP=1:20-500 not yet tested in other applications. optimal dilutions/concentrations should be determined by the end user.
<b>Theoretical molecular weight</b>	17kDa
<b>Detection molecular weight</b>	17
<b>Form</b>	Liquid
<b>immunogen</b>	KLH conjugated synthetic peptide derived from human Myoglobin
<b>Lsotype</b>	IgG
<b>Purification</b>	affinity purified by Protein A
<b>Buffer Solution</b>	10mM phosphate buffered saline(pH 7.4) with 150mM sodium chloride, 5% BSA, 2% sodium azide
<b>Storage</b>	Store at 4°C for short term. Store at -20°C for long term. Avoid repeated freeze/thaw cycles.
<b>PubMed</b>	<a href="#">PubMed</a>
<b>Product Detail</b>	Monomeric heme protein which primary function is to store oxygen and facilitate its diffusion with Reversibly binds oxygen through a pentacoordinated heme iron and enables its timely and efficient release during periods of heightened demand.

应用推荐 (Capture-Detection) : V0802-V0803

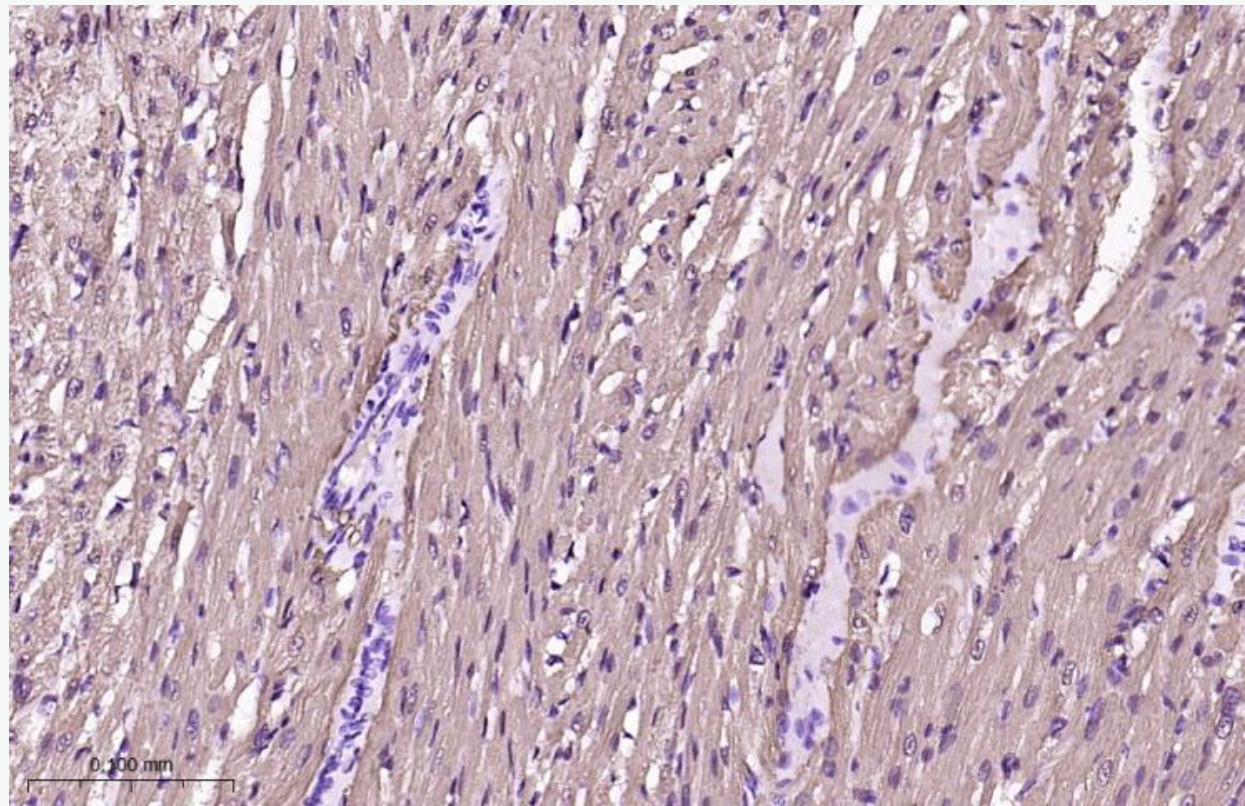


Western blot analysis of Human heart muscle lysate. Using Myoglobin (SLM-61245R) monoclonal antibody (1:1000 dilution) and 4°C overnight incubation. Followed by conjugated secondary antibody incubation at 37°C for 1 hour.

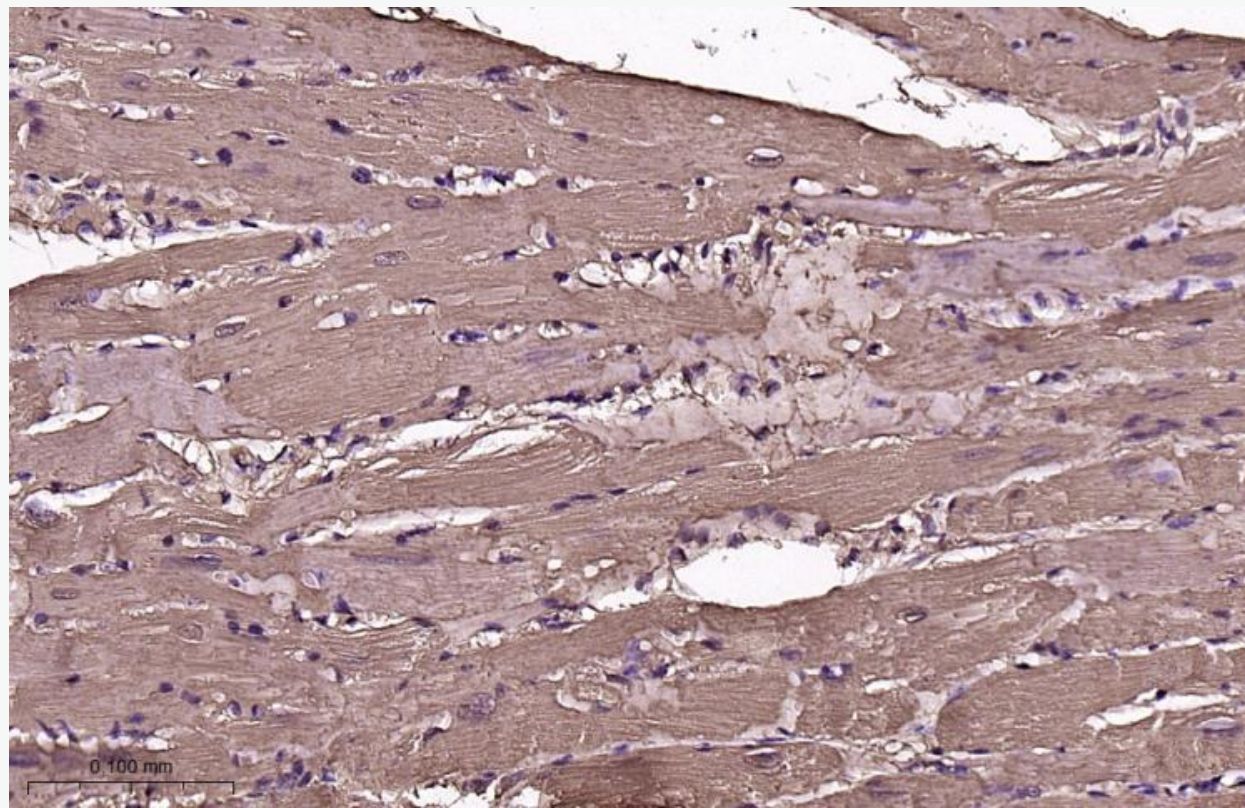
**Product  
Picture**



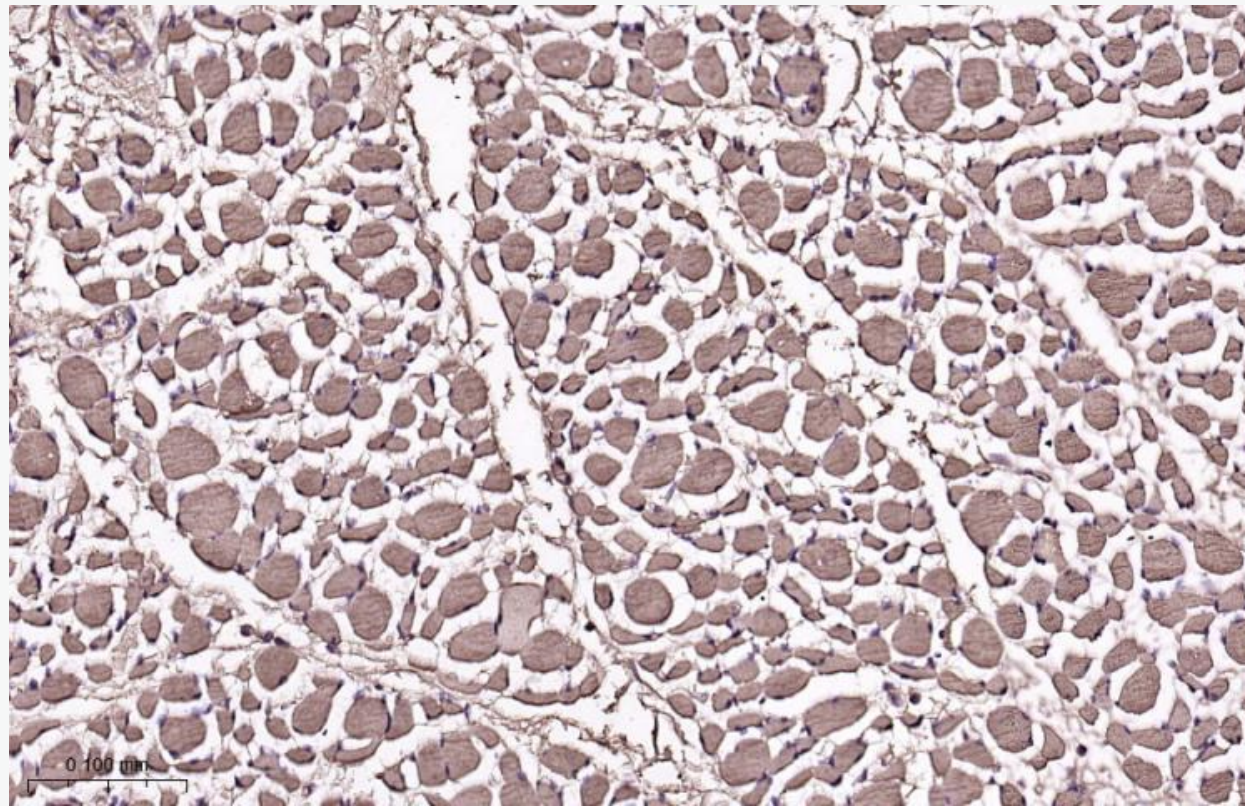
Paraformaldehyde-fixed, paraffin embedded Human Heart; Antigen retrieval by boiling in sodium citrate buffer (pH6.0) for 15 min; Antibody incubation with Myoglobin Monoclonal Antibody, Unconjugated (SLM-61245R) 1:1000 overnight at 4°C, followed by conjugation to the SL0295G-HRP and DAB (C-0010) staining.



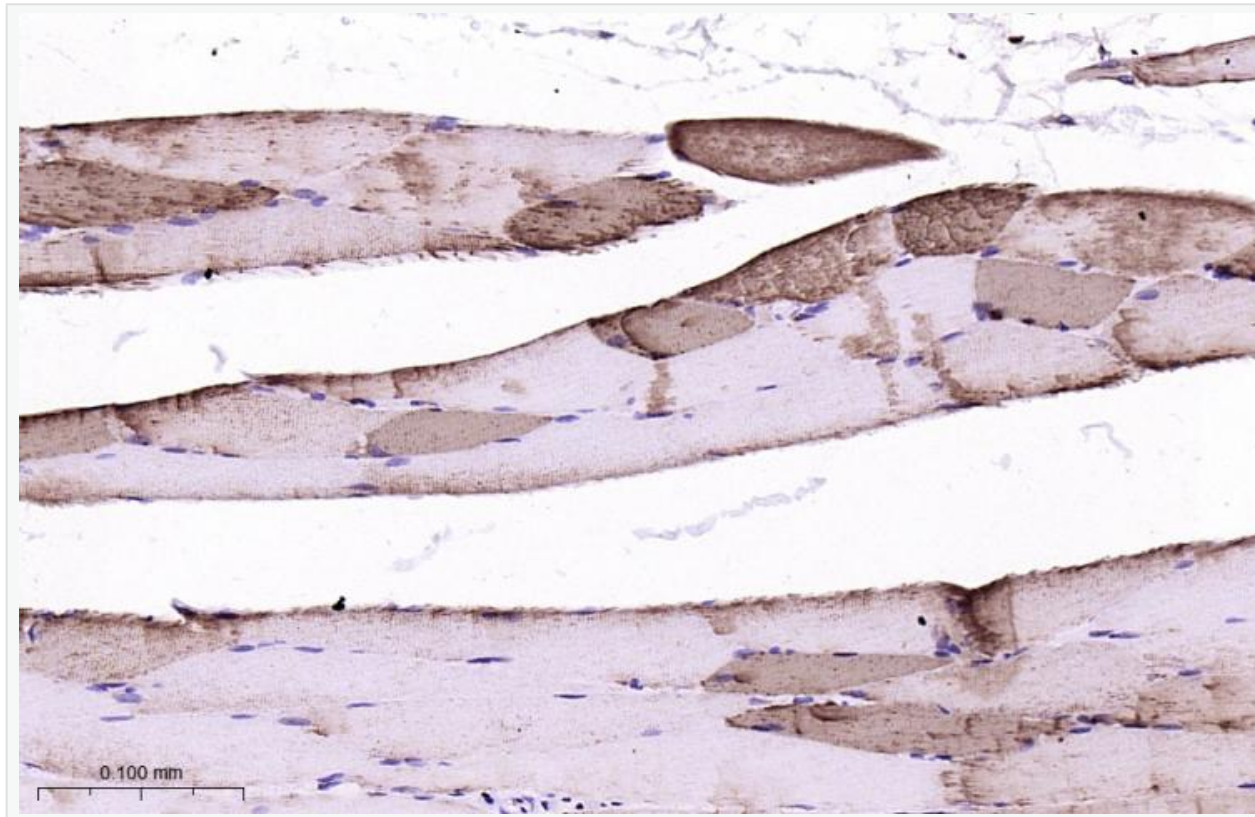
Paraformaldehyde-fixed, paraffin embedded Rat Heart; Antigen retrieval by boiling in sodium citrate buffer for 15 min; Antibody incubation with Myoglobin Monoclonal Antibody, Unconjugated(SLM-6001) overnight at 4°C, followed by conjugation to the SL0295G-HRP and DAB (C-0010) staining.



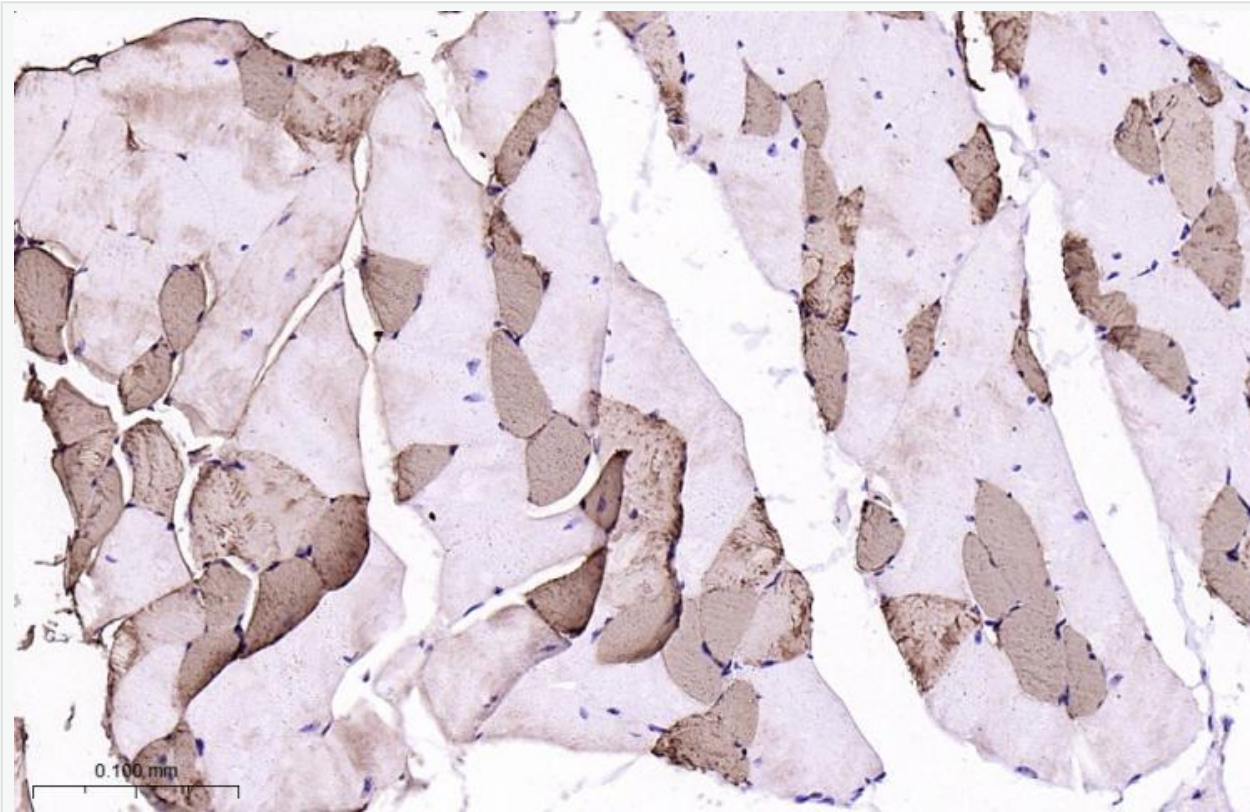
Paraformaldehyde-fixed, paraffin embedded Mouse Heart; Antigen retrieval by boiling in sodium citrate buffer (pH6.0) for 15 min; Antibody incubation with Myoglobin Monoclonal Antibody, Unconjugated (1:200) overnight at 4°C, followed by conjugation to the SL0295G-HRP and DAB (C-0010) stain.



Paraformaldehyde-fixed, paraffin embedded Human Skeletal muscle; Antigen retrieval by boiling in citrate buffer (pH6.0) for 15 min; Antibody incubation with Myoglobin Monoclonal Antibody, Unconjugated at 1:200 overnight at 4°C, followed by conjugation to the SL0295G-HRP and DAB (C-0010) staining.

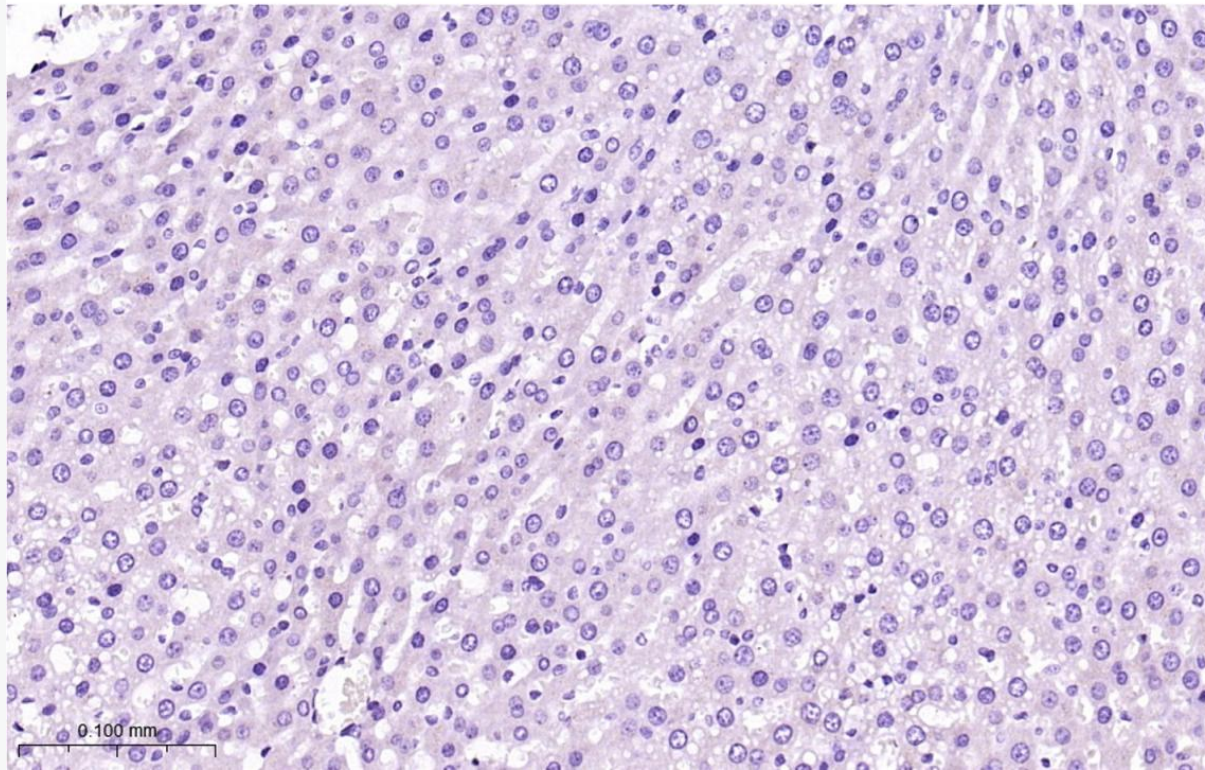


Paraformaldehyde-fixed, paraffin embedded Rat Skeletal muscle; Antigen retrieval by boiling in (pH6.0) for 15 min; Antibody incubation with Myoglobin Monoclonal Antibody, Unconjugated 1:200 overnight at 4°C, followed by conjugation to the SL0295G-HRP and DAB (C-0010) stain



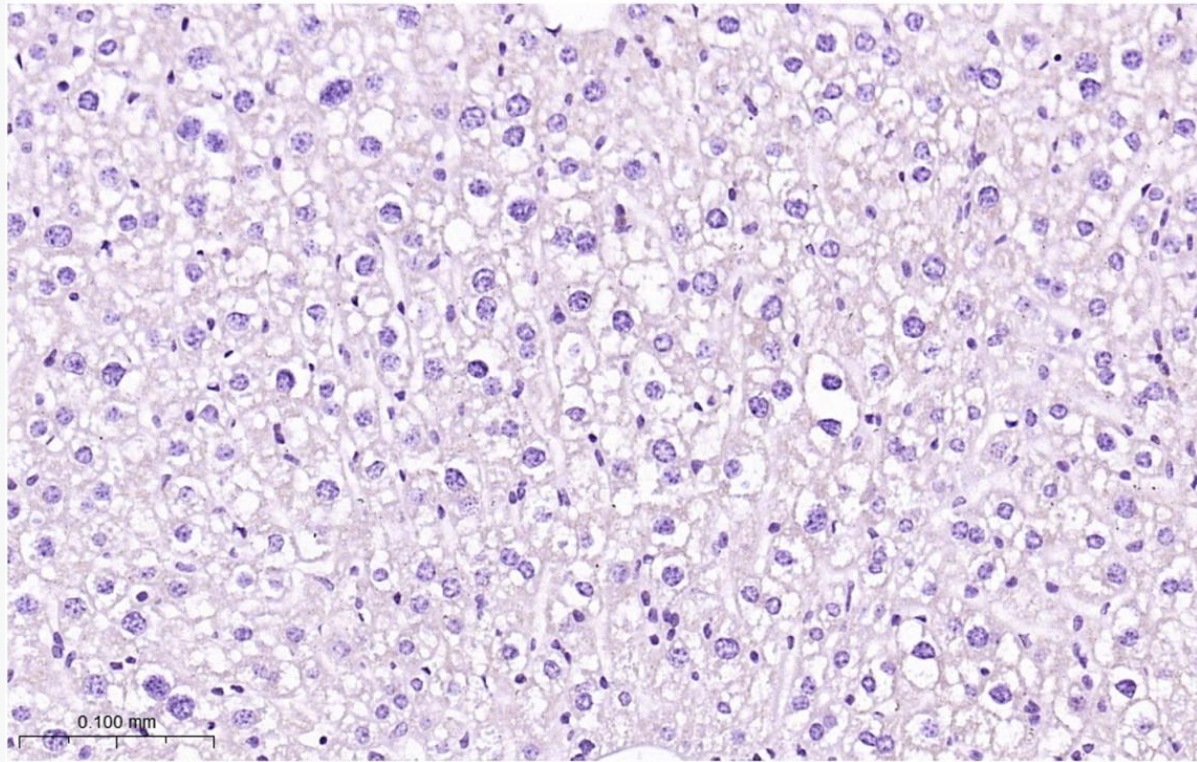
Paraformaldehyde-fixed, paraffin embedded Mouse Skeletal muscle; Antigen retrieval by boiling in citrate buffer (pH6.0) for 15 min; Antibody incubation with Myoglobin Monoclonal Antibody, Unconjugated at 1:200 overnight at 4°C, followed by conjugation to the SL0295G-HRP and DAB (C-0010) staining.

Negative control Rat Liver



(Negative control) Paraformaldehyde-fixed, paraffin embedded Rat Liver; Antigen retrieval by 100°C citrate buffer (pH6.0) for 15 min; Antibody incubation with Myoglobin Monoclonal Antibody, Unconjugated(SLM-61245R) at 1:200 overnight at 4°C, followed by conjugation to the SL0295 (C-0010) staining.

Negative control Mouse Liver



(Negative control) Paraformaldehyde-fixed, paraffin embedded Mouse Liver; Antigen retrieval citrate buffer (pH6.0) for 15 min; Antibody incubation with Myoglobin Monoclonal Antibody, Unconjugated(SLM-61245R) at 1:200 overnight at 4°C, followed by conjugation to the SL0295 (C-0010) staining.