



SUNLONG

SunLong Biotech Co.,LTD

Tel: 0086-571-56623320 Fax:0086-571-56623318

E-mail:sales@sunlongbiotech.com

www.sunlongbiotech.com

Rabbit Anti-HSP60 antibody

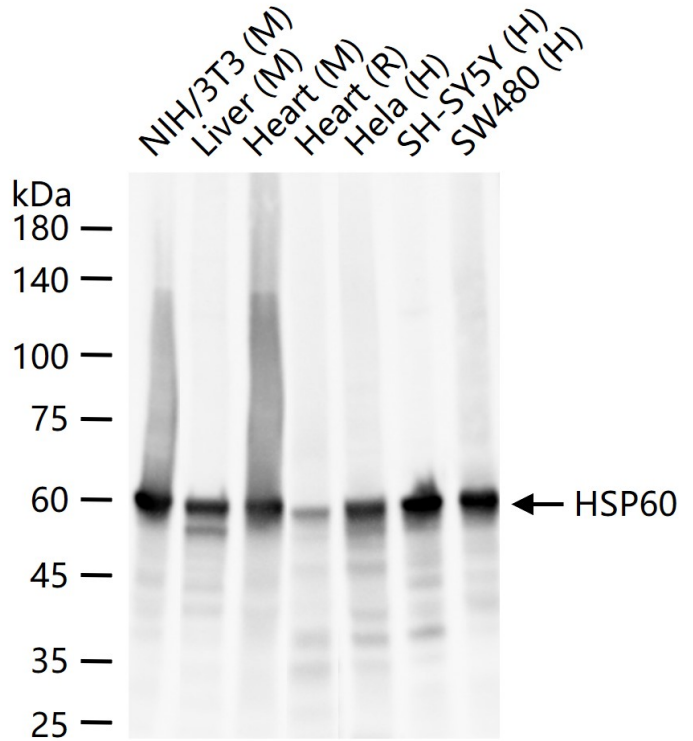
SLM-61183R

Product Name	Rabbit Anti-HSP60 antibody
Chinese Name	热休克蛋白-60/groELRecombinant rabbit monoclonal anti
Alias	HSPD1;CPN60;GROEL;HLD4;HSP60;HSP65;HuCHA60;SPG13.
Immunogen Species	Rabbit
Clonality	Recombinant
React Species	Human,Mouse,Rat
Applications	WB=1:500-2000,IHC-P=1:50-200,IHC-F=1:50-200,IF=1:50-200,ICC/IF=1:50-200 not yet tested in other applications. optimal dilutions/concentrations should be determined by the end user.
Theoretical molecular weight	61kDa
Detection molecular weight	60
Form	Liquid
immunogen	KLH conjugated synthetic peptide derived from human Hsp60
Lsotype	IgG
Purification	affinity purified by Protein A
Buffer Solution	10mM phosphate buffered saline(pH 7.4) with 150mM sodium chloride, 5% BSA, 2% sodium azide
Storage	Store at 4°C for short term. Store at -20°C for long term. Avoid repeated freeze/thaw cycles.
PubMed	PubMed
Product Detail	Chaperonin implicated in mitochondrial protein import and macromolecular assembly. Together with Hsp70, Hsp90, and Hsp100, Hsp60 is essential for the correct folding of imported proteins. May also prevent misfolding and promote the refolding and proteolysis of unfolded polypeptides generated under stress conditions in the mitochondrial matrix.

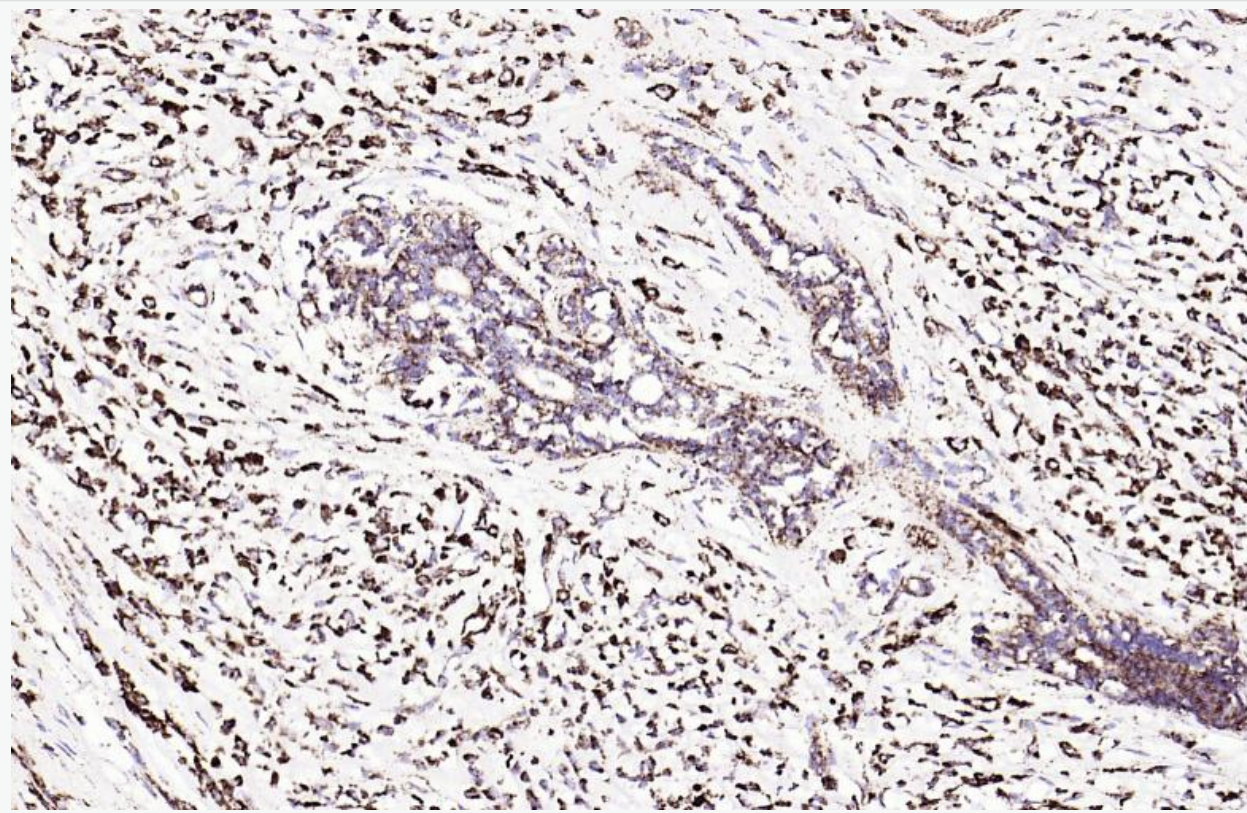
信号传导 (Signaling Intermediates) HSP60 是一类进化上高度保守的蛋白质家族.生理状态

的正确转位、折叠和装配,起"分子伴侣"的作用;在应激状态下,HSP60 过表达或异位表达,作为系统识别,诱发机体的保护性免疫应答,也可作为一种信号分子,在 Signal transduction 中发挥 Tumor 的发生、增殖及分化有关,主要用于舌鳞癌、结肠癌、胰腺癌和乳腺癌的研究,近在自身免疫性疾病、传染病、动脉粥样硬化及慢性感染的发病中均发挥重

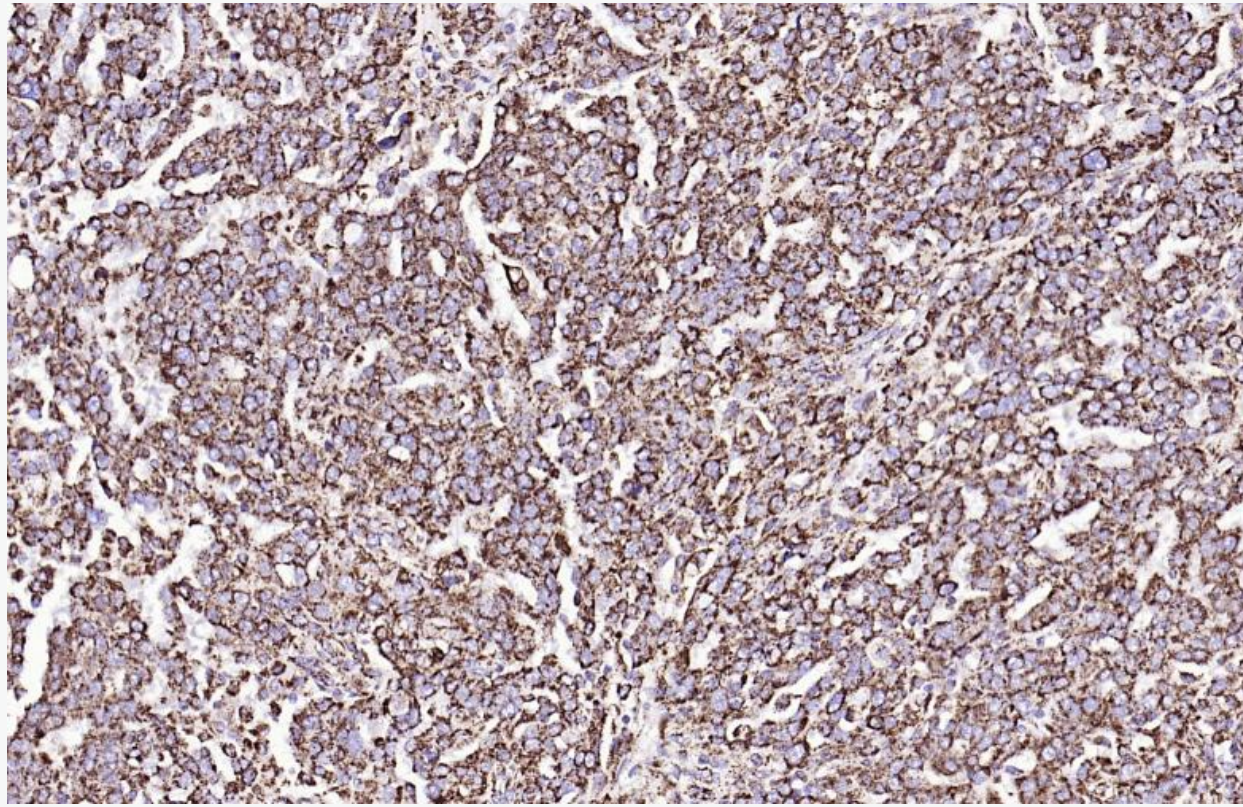
**Product
Picture**



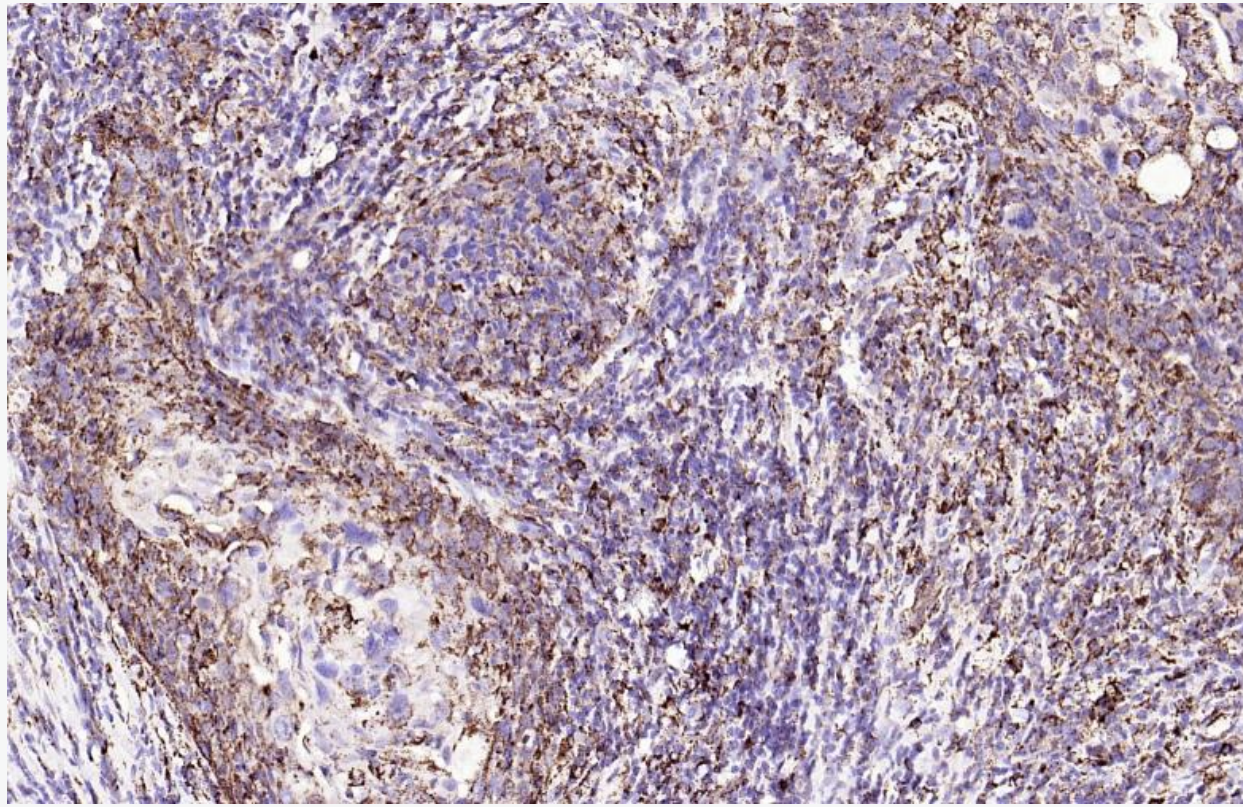
25 ug total protein per lane of various lysates (see on figure) probed with HSP60 monoclonal antibody (SLM-61183R) at 1:2000 dilution and 4°C overnight incubation. Followed by conjugated secondary antibody incubation at r.t. for 60 min.



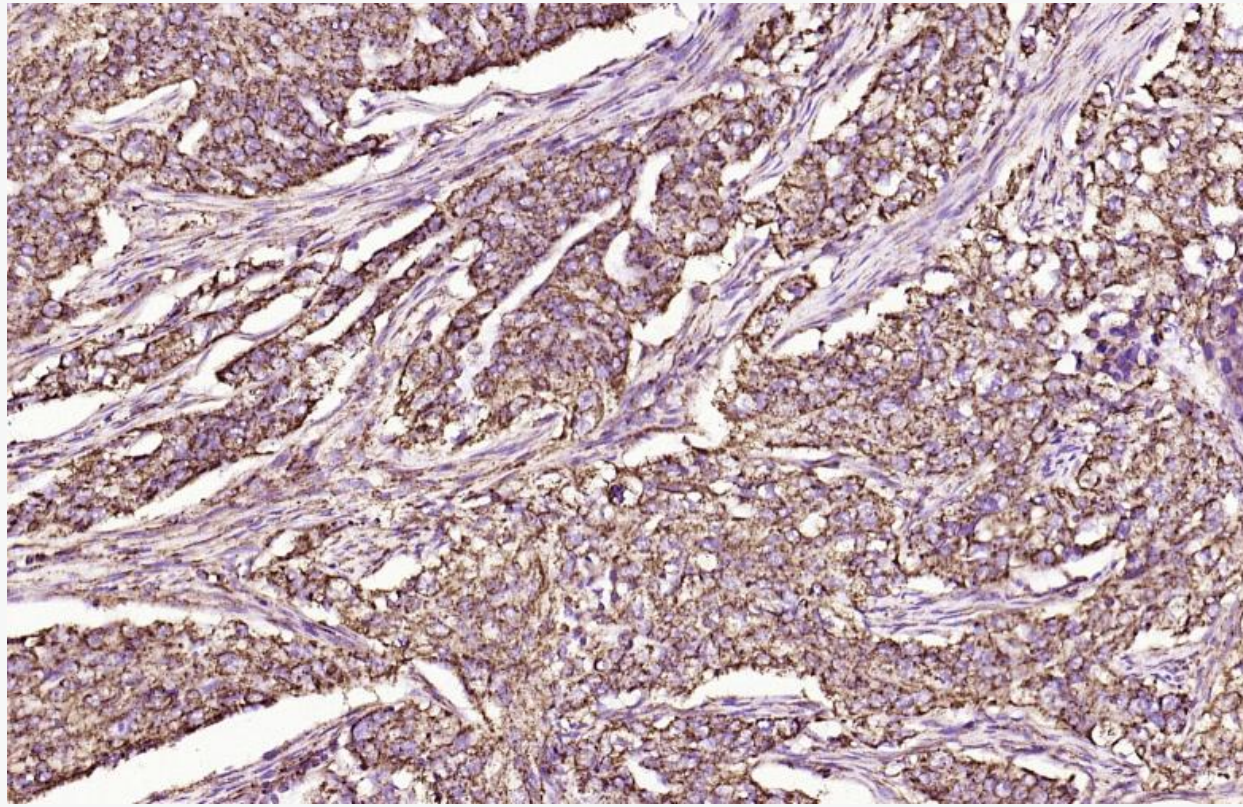
Paraformaldehyde-fixed, paraffin embedded Human Breast Cancer; Antigen retrieval by boiling in citrate buffer (pH6.0) for 15 min; Antibody incubation with HSP60 Monoclonal Antibody, Unconjugated (1:200) overnight at 4°C, followed by conjugation to the SP Kit (Rabbit, SP-0023) and DAB (C-001).



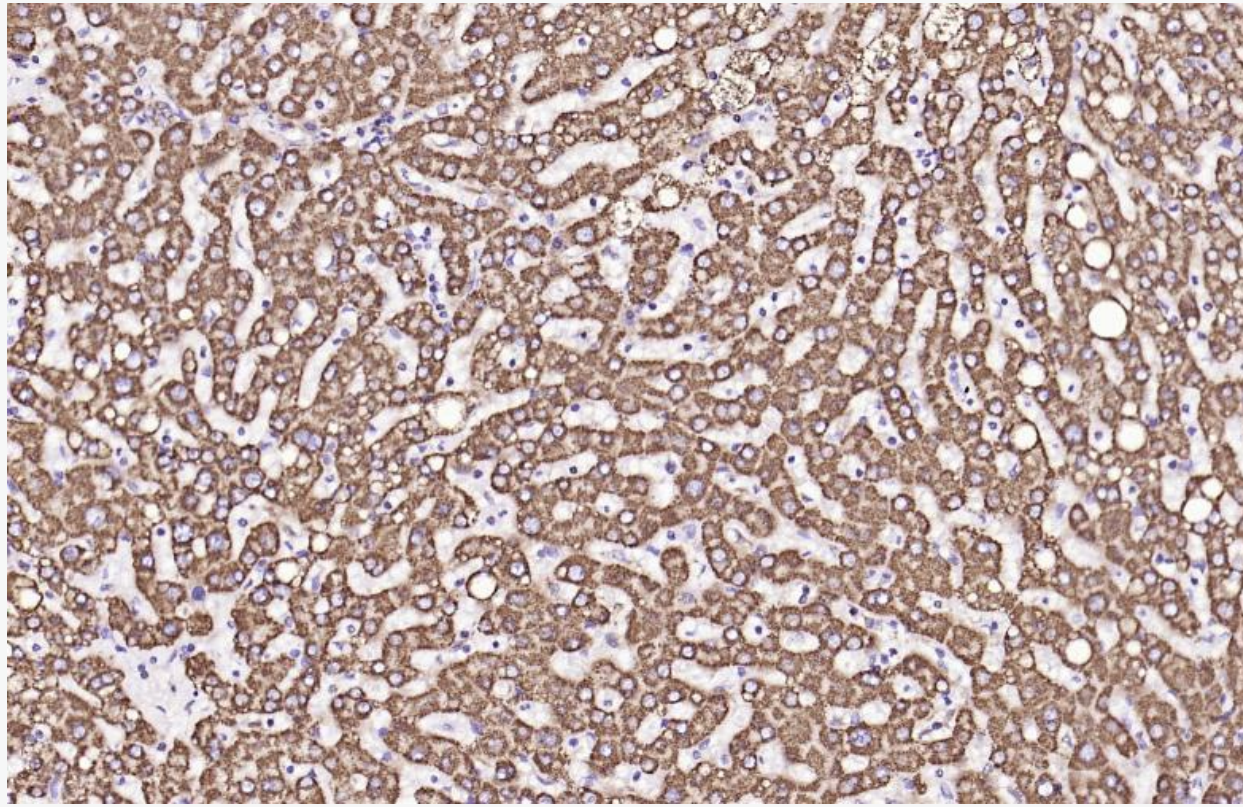
Paraformaldehyde-fixed, paraffin embedded Human Ovarian Cancer; Antigen retrieval by boiling in citrate buffer (pH6.0) for 15 min; Antibody incubation with HSP60 Monoclonal Antibody, Unconjugated (1:200 overnight at 4°C, followed by conjugation to the SP Kit (Rabbit, SP-0023) and DAB (C-001).



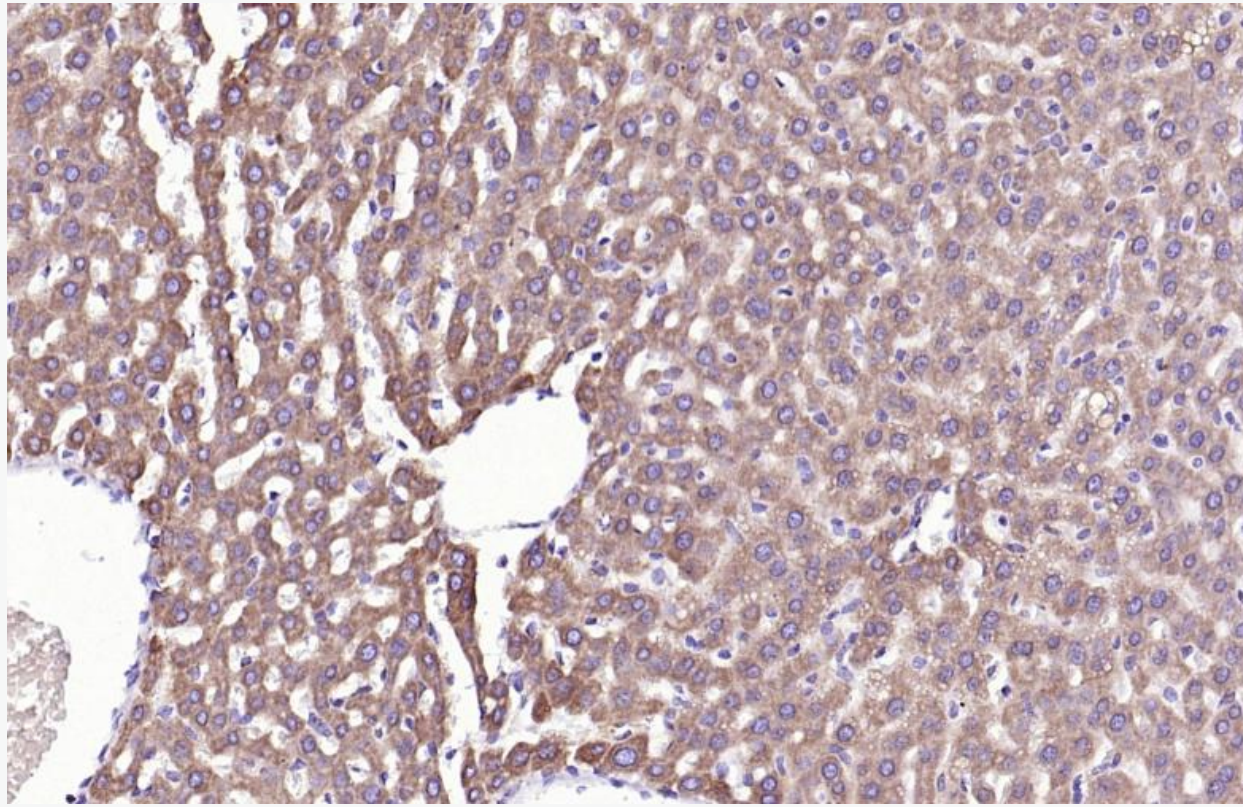
Paraformaldehyde-fixed, paraffin embedded Human Cervical Cancer; Antigen retrieval by boiling in citrate buffer (pH6.0) for 15 min; Antibody incubation with HSP60 Monoclonal Antibody, Unconjugated (1:200) overnight at 4°C, followed by conjugation to the SP Kit (Rabbit, SP-0023) and DAB (C-001).



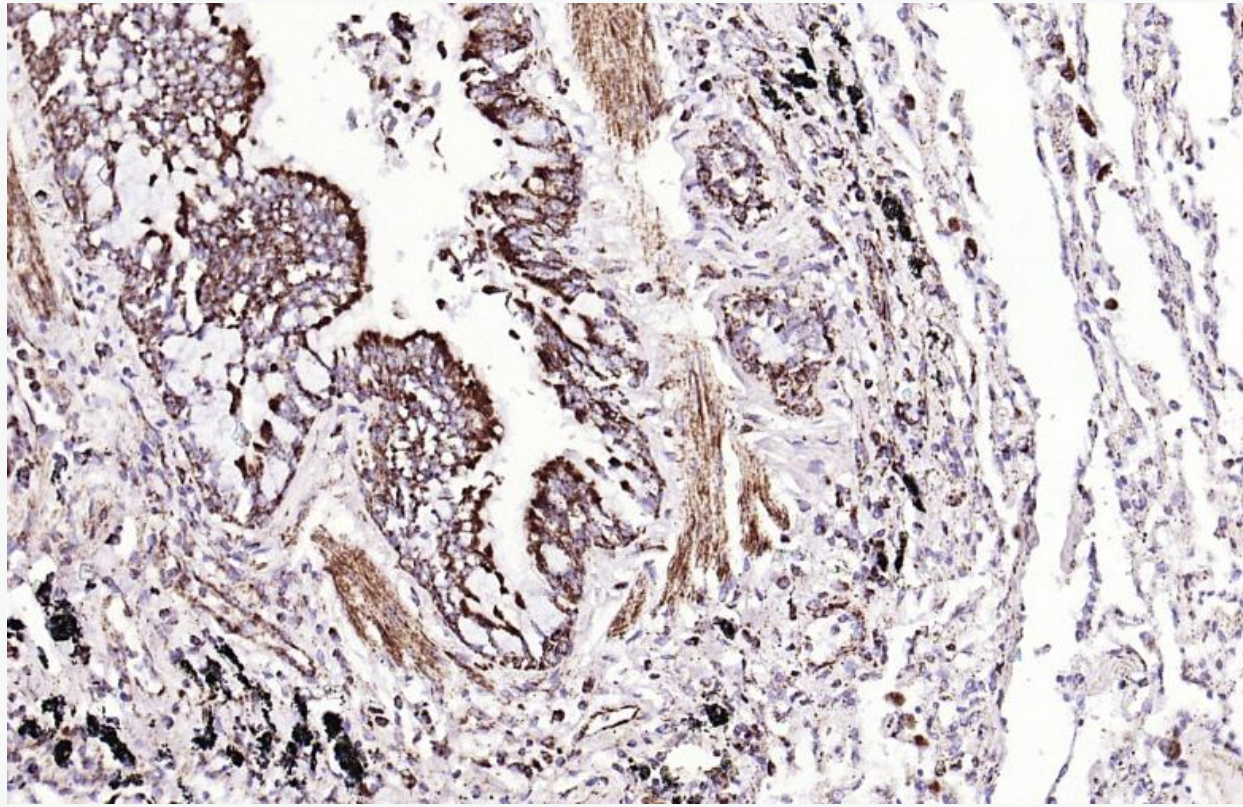
Paraformaldehyde-fixed, paraffin embedded Human Lung Cancer; Antigen retrieval by boiling in citrate buffer (pH6.0) for 15 min; Antibody incubation with HSP60 Monoclonal Antibody, Unconjugated(SL-0023) overnight at 4°C, followed by conjugation to the SP Kit (Rabbit, SP-0023)and DAB (C-0010) staining.



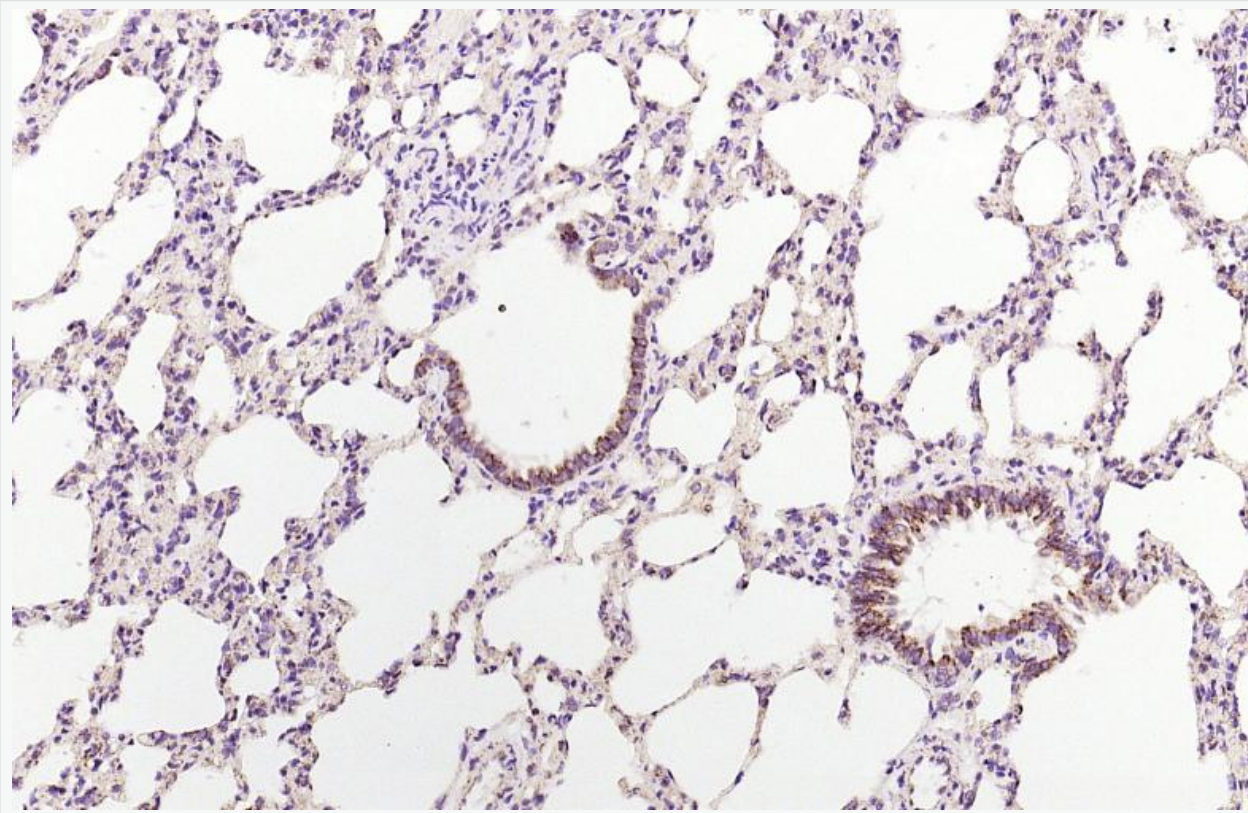
Paraformaldehyde-fixed, paraffin embedded Human Liver; Antigen retrieval by boiling in sodium citrate buffer (pH6.0) for 15 min; Antibody incubation with HSP60 Monoclonal Antibody, Unconjugated(SL-0023) overnight at 4°C, followed by conjugation to the SP Kit (Rabbit, SP-0023)and DAB (C-0010) staining.



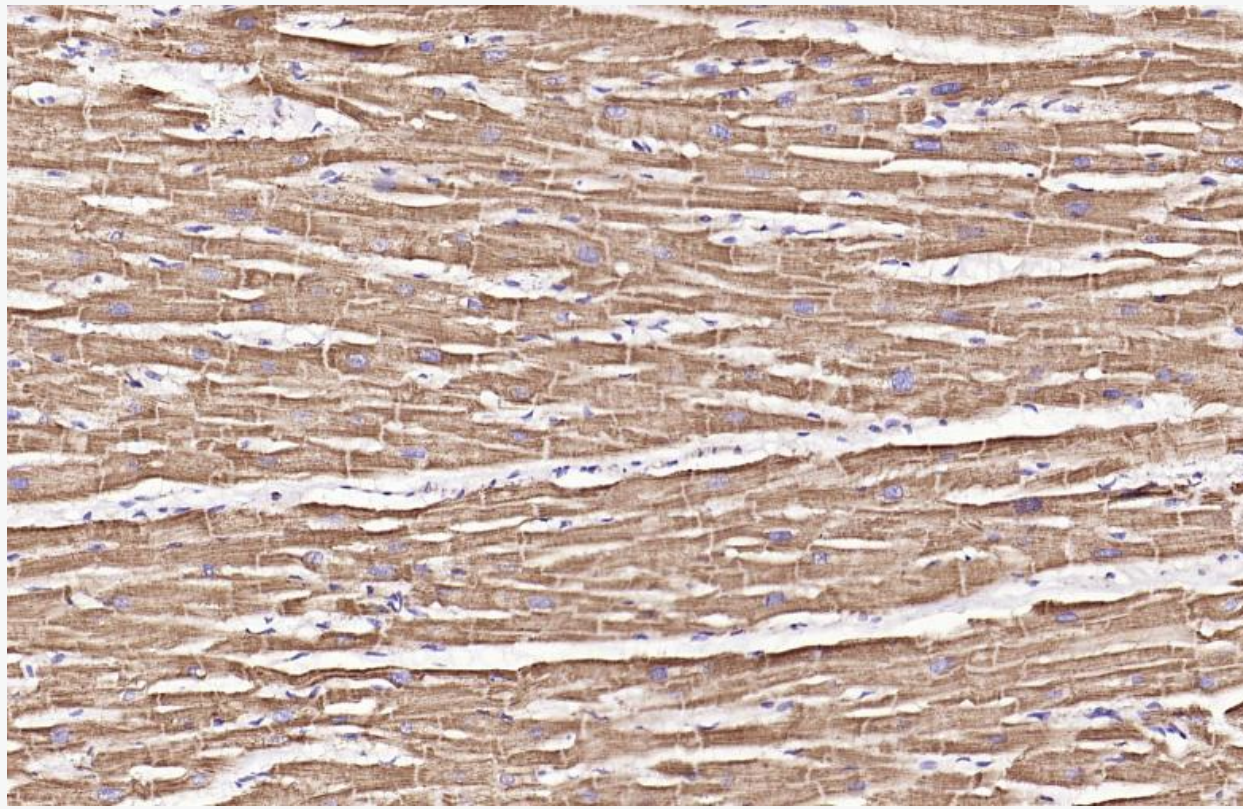
Paraformaldehyde-fixed, paraffin embedded Rat Liver; Antigen retrieval by boiling in sodium citrate buffer for 15 min; Antibody incubation with HSP60 Monoclonal Antibody, Unconjugated(SLM-61183) at 4°C, followed by conjugation to the SP Kit (Rabbit, SP-0023)and DAB (C-0010) staining.



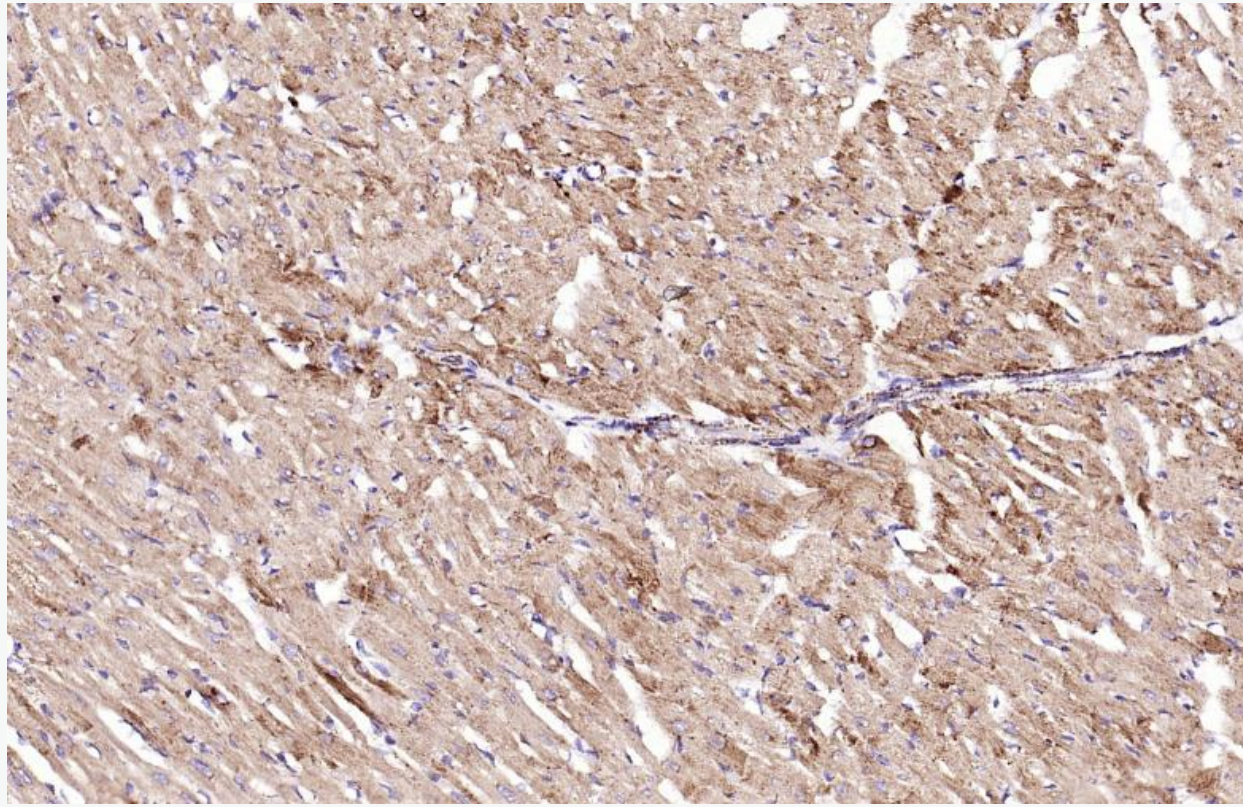
Paraformaldehyde-fixed, paraffin embedded Human Lung; Antigen retrieval by boiling in sodium citrate buffer (pH6.0) for 15 min; Antibody incubation with HSP60 Monoclonal Antibody, Unconjugated(SL-0023) overnight at 4°C, followed by conjugation to the SP Kit (Rabbit, SP-0023)and DAB (C-0010) staining.



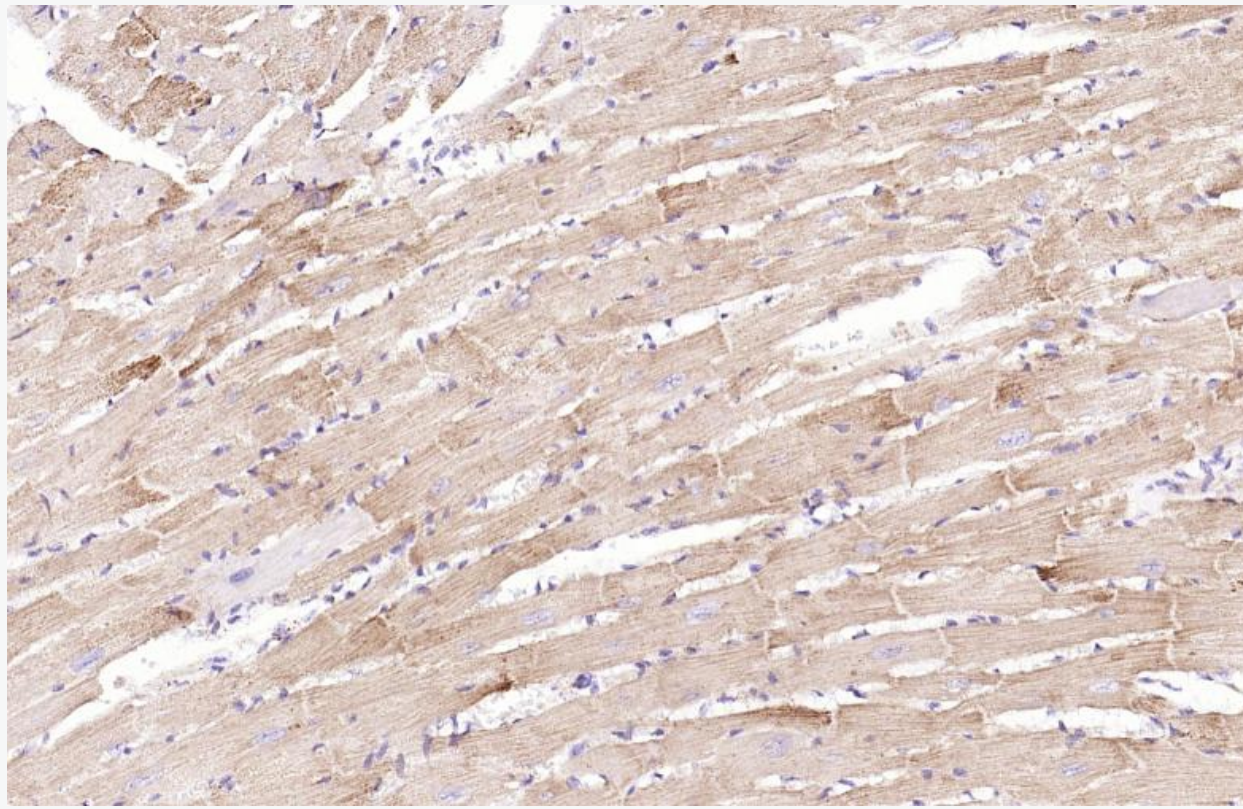
Paraformaldehyde-fixed, paraffin embedded Rat Lung; Antigen retrieval by boiling in sodium citrate buffer for 15 min; Antibody incubation with HSP60 Monoclonal Antibody, Unconjugated(SLM-61183) at 4°C, followed by conjugation to the SP Kit (Rabbit, SP-0023)and DAB (C-0010) staining.



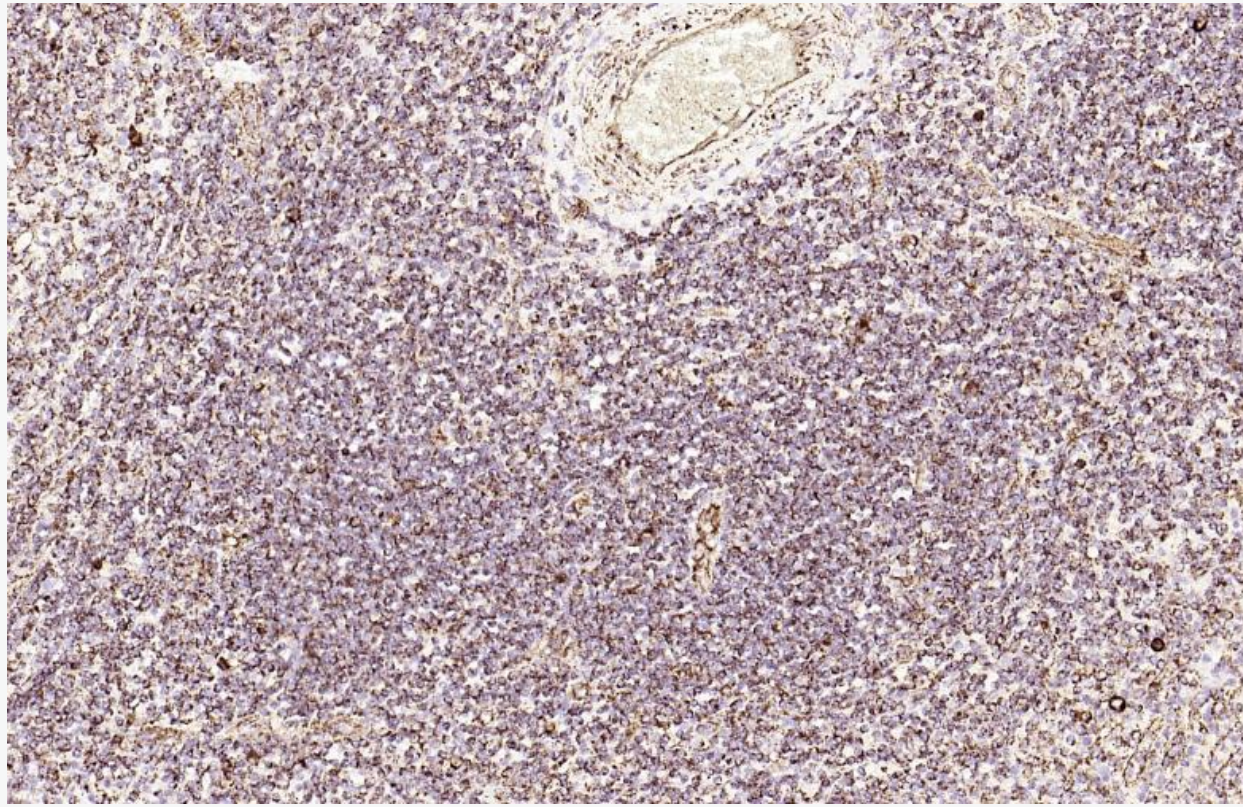
Paraformaldehyde-fixed, paraffin embedded Human Heart; Antigen retrieval by boiling in sodium citrate buffer (pH6.0) for 15 min; Antibody incubation with HSP60 Monoclonal Antibody, Unconjugated(SL-0023) overnight at 4°C, followed by conjugation to the SP Kit (Rabbit, SP-0023)and DAB (C-0010) substrate.



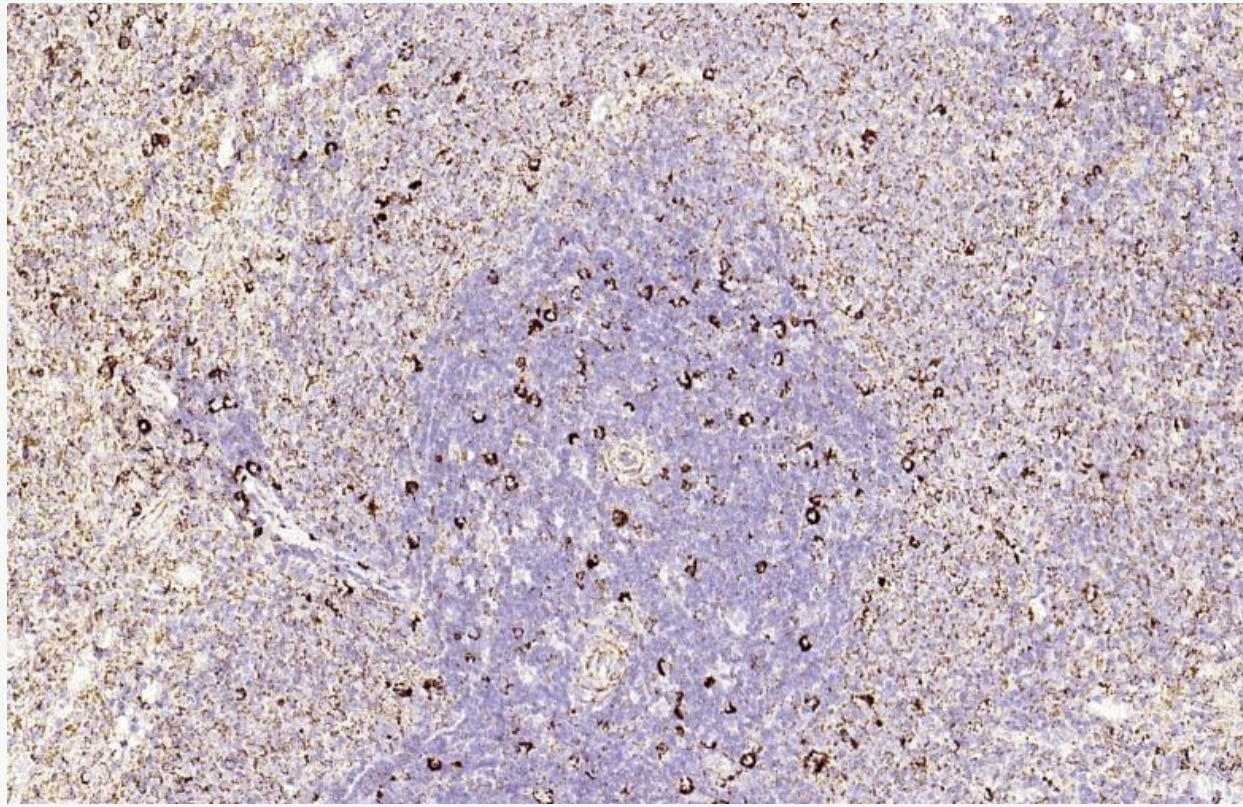
Paraformaldehyde-fixed, paraffin embedded Rat Heart; Antigen retrieval by boiling in sodium citrate buffer for 15 min; Antibody incubation with HSP60 Monoclonal Antibody, Unconjugated(SLM-61183) at 4°C, followed by conjugation to the SP Kit (Rabbit, SP-0023)and DAB (C-0010) staining.



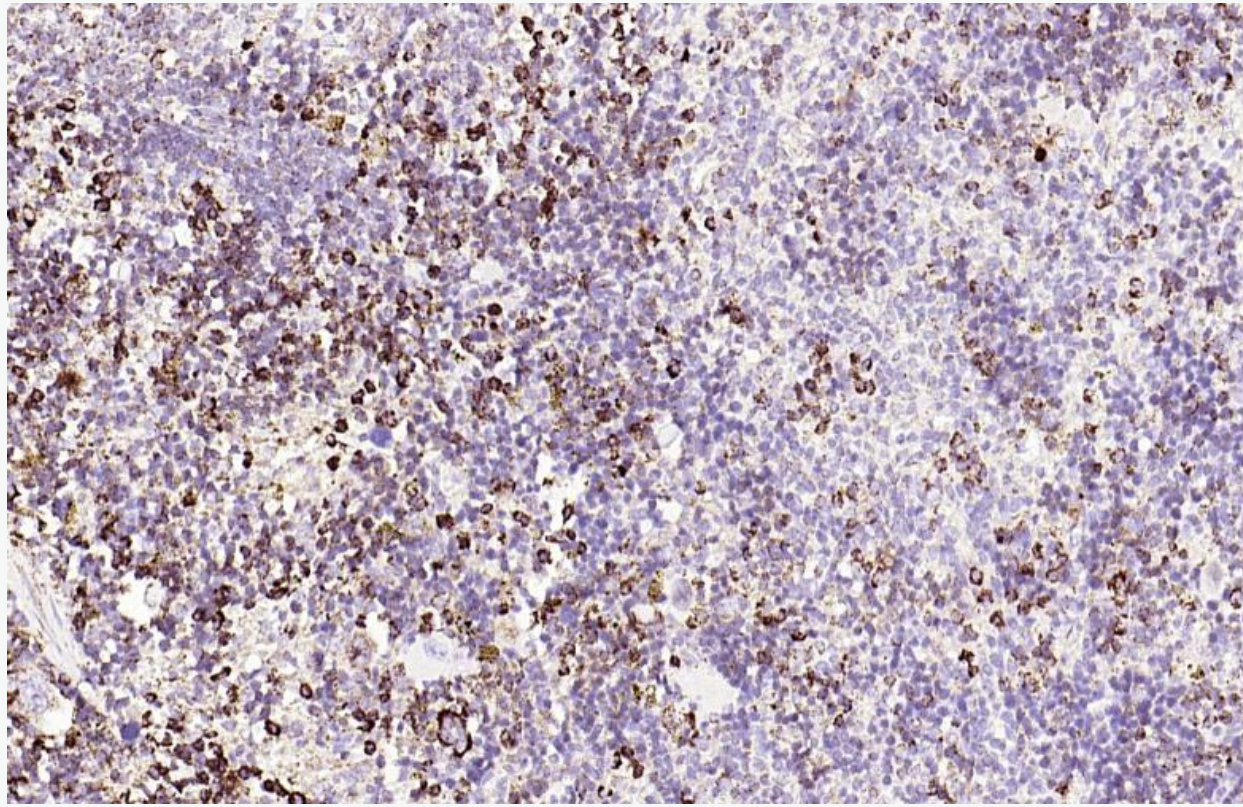
Paraformaldehyde-fixed, paraffin embedded Mouse Heart; Antigen retrieval by boiling in sodium citrate buffer (pH6.0) for 15 min; Antibody incubation with HSP60 Monoclonal Antibody, Unconjugated(SL-0023) overnight at 4°C, followed by conjugation to the SP Kit (Rabbit, SP-0023)and DAB (C-0010) staining.



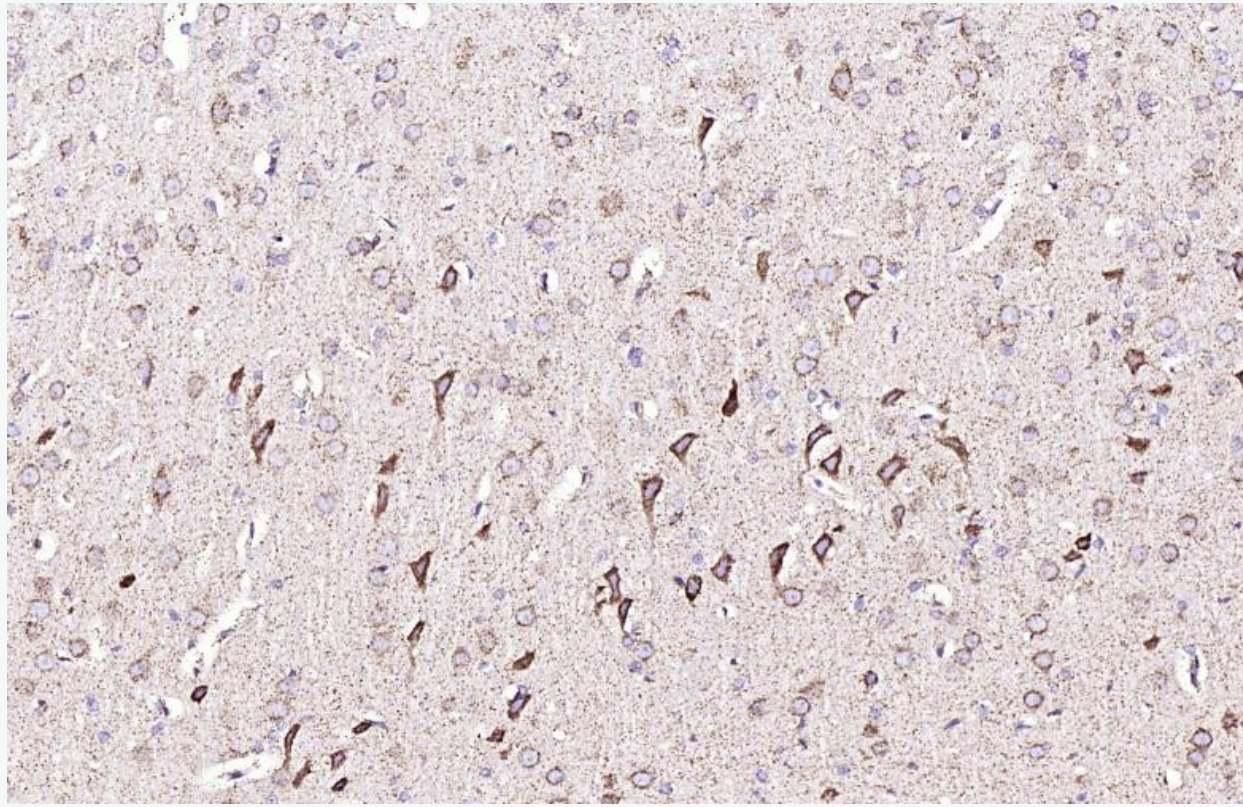
Paraformaldehyde-fixed, paraffin embedded Human Spleen; Antigen retrieval by boiling in sodium citrate buffer (pH6.0) for 15 min; Antibody incubation with HSP60 Monoclonal Antibody, Unconjugated(SL-0023) overnight at 4°C, followed by conjugation to the SP Kit (Rabbit, SP-0023)and DAB (C-0010) staining.



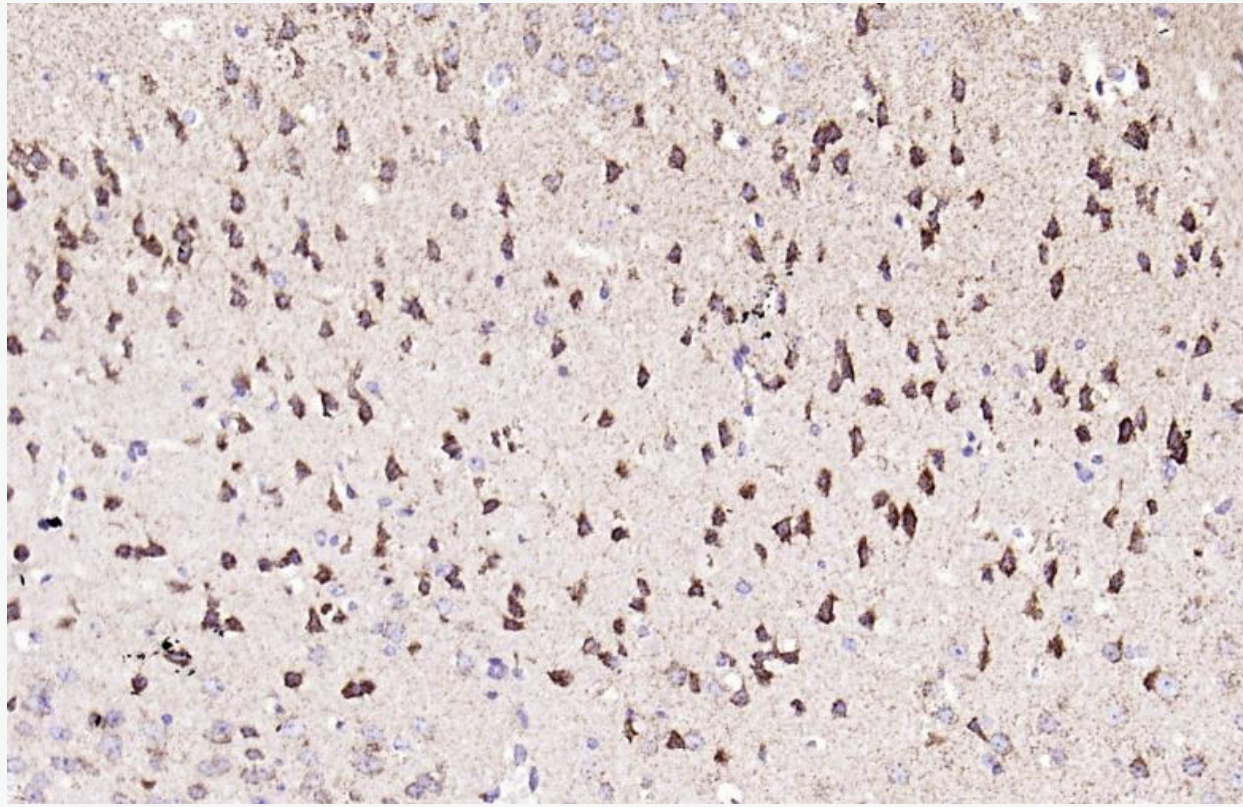
Paraformaldehyde-fixed, paraffin embedded Rat Spleen; Antigen retrieval by boiling in sodium for 15 min; Antibody incubation with HSP60 Monoclonal Antibody, Unconjugated(SLM-61183 at 4°C, followed by conjugation to the SP Kit (Rabbit, SP-0023)and DAB (C-0010) staining.



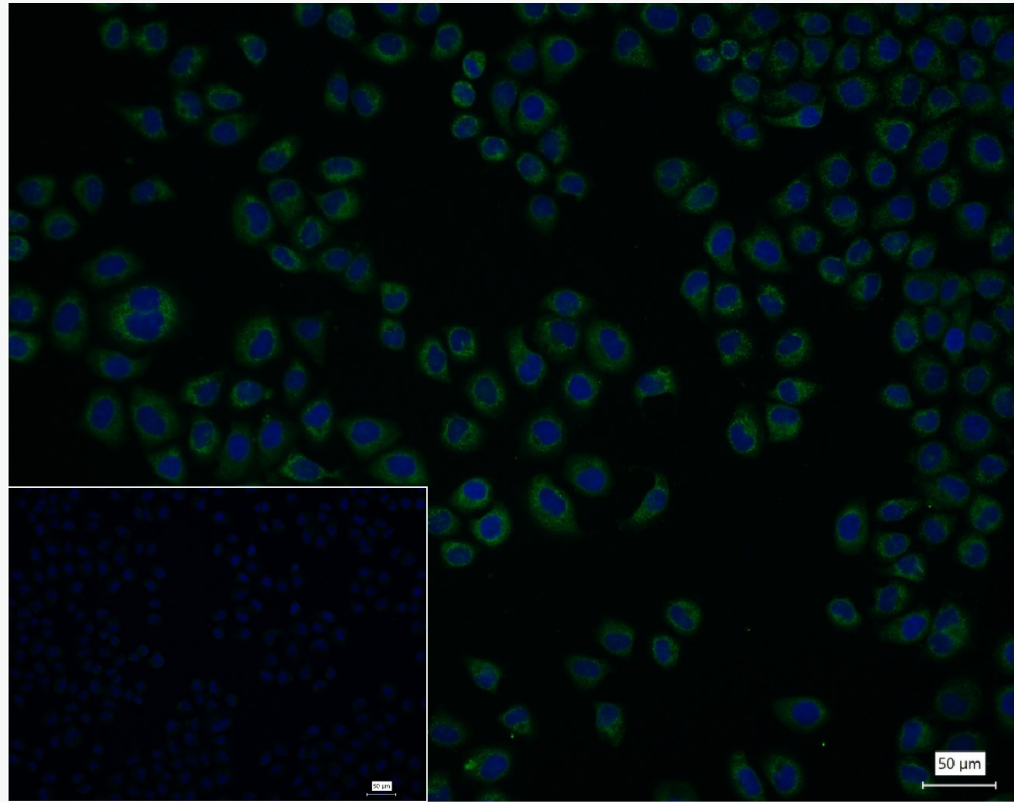
Paraformaldehyde-fixed, paraffin embedded Mouse Spleen; Antigen retrieval by boiling in sodium citrate buffer (pH6.0) for 15 min; Antibody incubation with HSP60 Monoclonal Antibody, Unconjugated(SL-0023) overnight at 4°C, followed by conjugation to the SP Kit (Rabbit, SP-0023)and DAB (C-0010) staining.



Paraformaldehyde-fixed, paraffin embedded Rat Cerebrum; Antigen retrieval by boiling in sodium citrate buffer (pH6.0) for 15 min; Antibody incubation with HSP60 Monoclonal Antibody, Unconjugated(SL-0023) overnight at 4°C, followed by conjugation to the SP Kit (Rabbit, SP-0023)and DAB (C-0010) staining.



Paraformaldehyde-fixed, paraffin embedded Mouse Cerebrum; Antigen retrieval by boiling in s (pH6.0) for 15 min; Antibody incubation with HSP60 Monoclonal Antibody, Unconjugated(SL overnight at 4°C, followed by conjugation to the SP Kit (Rabbit, SP-0023)and DAB (C-0010) st



4% Paraformaldehyde-fixed HeLa (H) cell; Triton X-100 at r.t. for 20 min; Antibody incubation with unconjugated monoclonal Antibody, unconjugated (SLM-61183R) 1:100, 90 min at 37°C; followed by conjugated secondary antibody (IgG antibody (green, SL60295G-FITC) at 37°C for 90 min, DAPI (blue, C02-04002) was used to stain the nuclei. PBS instead of the primary antibody was used as the blank control.