

Mouse Anti-Citrate synthase antibody

SLM-60753M

Product Name Citrate synthase

Chinese Name 柠檬酸合成酶 Cisy 单克隆抗体

Alias Cisy_HUMAN; Citrate synthase, mitochondrial; Cs; EC 2.3.3.1; Citrate (Si)-synthase. 柠檬酸

Research Area Tumour Cell biology Signal transduction The new supersedes the old

Immunogen Species Mouse

Clonality Monoclonal

Clone NO. C9H4

React Species Human,Mouse,Rat

Applications WB=1:500-1000,IHC-P=1:50-200,IHC-F=1:50-200,ICC/IF=1:50-200,IF=1:50-200 (Paraffin s repair)
not yet tested in other applications.
optimal dilutions/concentrations should be determined by the end user.

Theoretical molecular weight 52kDa

Cellular localization cytoplasmic

Form Liquid

Concentration 1mg/ml

immunogen KLH conjugated synthetic peptide derived from human citrate synthase

Lsotype IgG

Purification affinity purified by Protein A

Buffer Solution PBS, Glycerol, BSA

Storage Shipped at 4°C. Store at -20 °C for one year. Avoid repeated freeze/thaw cycles.

Attention This product as supplied is intended for research use only, not for use in human, therapeutic or d

PubMed [PubMed](#)

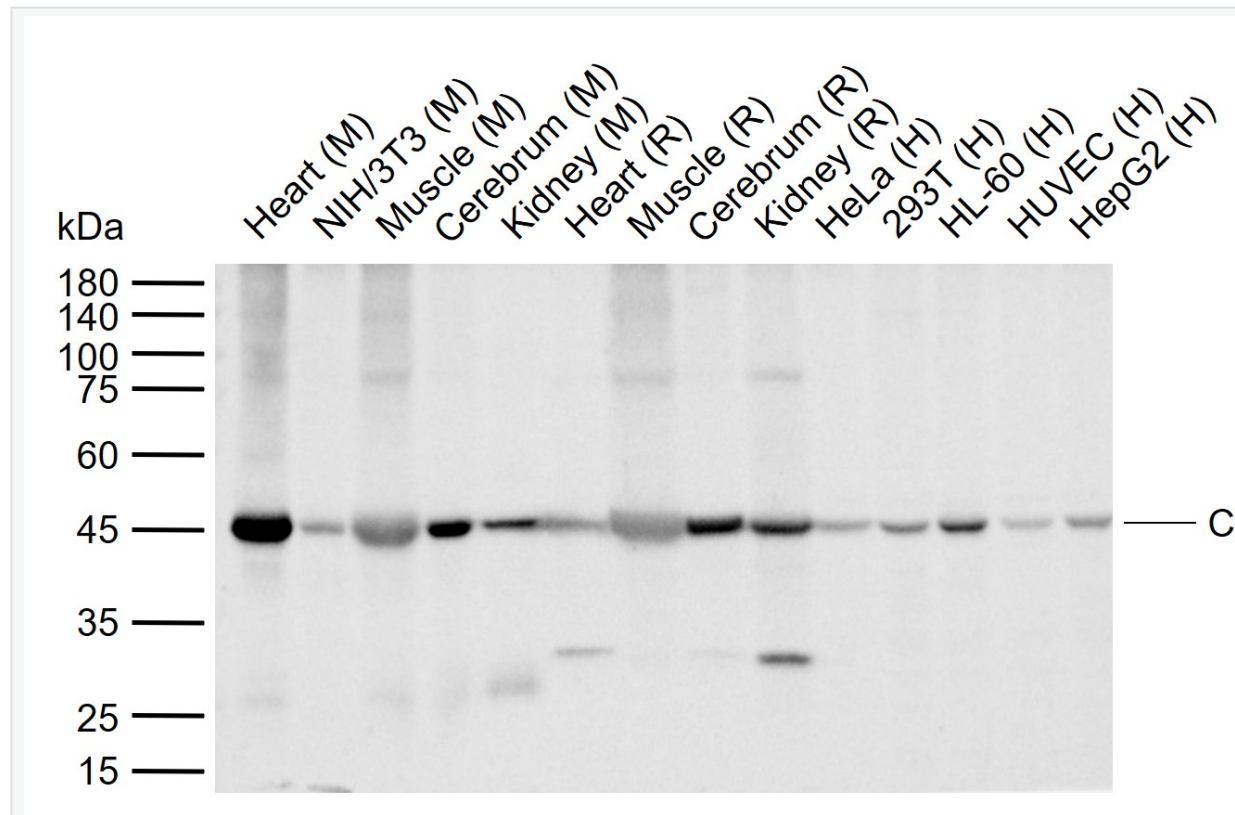
Product Detail The protein encoded by this gene is a Krebs tricarboxylic acid cycle enzyme that catalyzes the conversion of citrate from oxaloacetate and acetyl coenzyme A. The enzyme is found in nearly all cells

metablism. This protein is nuclear encoded and transported into the mitochondrial matrix form is found. [provided by RefSeq, Jul 2008]

SWISS:
O75390

Gene ID:
1431

**Product
Picture**



Sample:

Lane 1: Mouse Heart tissue lysates

Lane 2: Mouse NIH/3T3 cell lysates

Lane 3: Mouse Muscle tissue lysates

Lane 4: Mouse Cerebrum tissue lysates

Lane 5: Mouse Kidney tissue lysates

Lane 6: Rat Heart tissue lysates

Lane 7: Rat Muscle tissue lysates

Lane 8: Rat Cerebrum tissue lysates

Lane 9: Rat Kidney tissue lysates

Lane 10: Human HeLa cell lysates

Lane 11: Human 293T cell lysates

Lane 12: Human HL-60 cell lysates

Lane 13: Human HUVEC cell lysates

Lane 14: Human HepG2 cell lysates

Primary: Anti-Citrate synthase (SLM-60753M) at 1/1000 dilution

Secondary: IRDye800CW Goat Anti- Mouse IgG at 1/20000 dilution

Predicted band size: 52 kDa

Observed band size: 45 kDa