



Rabbit Anti-CD239 antibody

SLM-60746R

Product Name CD239**Chinese Name** BCell adhesion moleculeCD239Recombinant rabbit monoclonal anti**Alias**

Antigen identified by monoclonal antibody F8; AU antibody Auberger B antigen; B CAM cell surface glycoprotein; B cell adhesion molecule; B-CAM cell surface glycoprotein; Basal cell adhesion molecule; Basal cell adhesion molecule Lu and Au blood groups; Basal cell adhesion molecule Lutheran blood group; Bcam; BCAM_HUMAN; CD239; CD239 antigen; F8/G253 antigen; Glycoprotein 95kDa; LU; Lutheran; Lutheran antigen; Lutheran blood group (Auberger b antigen included); Lutheran blood group Auberger b antigen included; Lutheran blood group glycoprotein; MSK19.

Research Area

Cardiovascular Cell biology Signal transduction The cell membrane 受体 Cell adhesion molecule Cell Surface Molecule vascular endothelial cell

Immunogen Species

Rabbit

Clonality

Monoclonal

React Species

Human

Applications

WB=1:500-2000,IHC-P=1:100-500,IHC-F=1:400-800,IF=1:100-500 (Paraffin sections need antigen repair)
not yet tested in other applications.
optimal dilutions/concentrations should be determined by the end user.

Theoretical molecular weight

64kDa

Cellular localization

The cell membrane

Form

Liquid

Concentration

1mg/ml

immunogen

KLH conjugated synthetic peptide derived from human CD239

Lsotype

IgG

Purification

affinity purified by Protein A

Buffer Solution

PBS, Glycerol, BSA

Storage

Shipped at 4°C. Store at -20 °C for one year. Avoid repeated freeze/thaw cycles.

Attention

This product as supplied is intended for research use only, not for use in human, therapeutic or diagnostic applications.

PubMed

[PubMed](#)

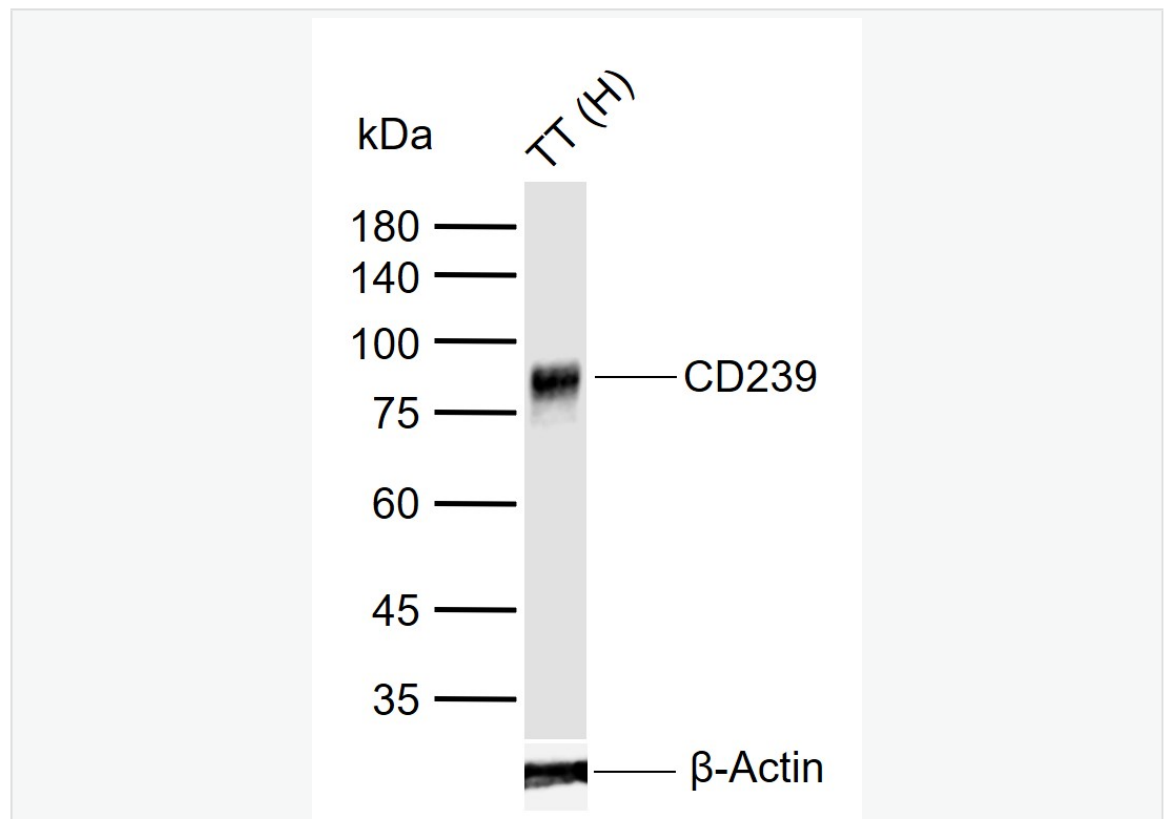
Product Detail

This gene encodes Lutheran blood group glycoprotein, a member of the immunoglobulin superfamily and a receptor for the extracellular matrix protein, laminin. The protein contains five extracellular immunoglobulin domains, a single transmembrane domain, and a short C-terminal cytoplasmic tail. This protein may play a role in epithelial cell cancer and in vaso-occlusion of red blood cells in sickle cell disease. Polymorphisms in this gene define some of the antigens in the Lutheran system and also the Auberger system. Inactivating variants of this gene result in the recessive Lutheran null phenotype, Lu(a-b-), of the Lutheran blood group. Two transcript variants encoding different isoforms have been found for this gene. [provided by RefSeq, May 2012].

SWISS:
P50895

Gene ID:
4059

Product Picture



Sample:

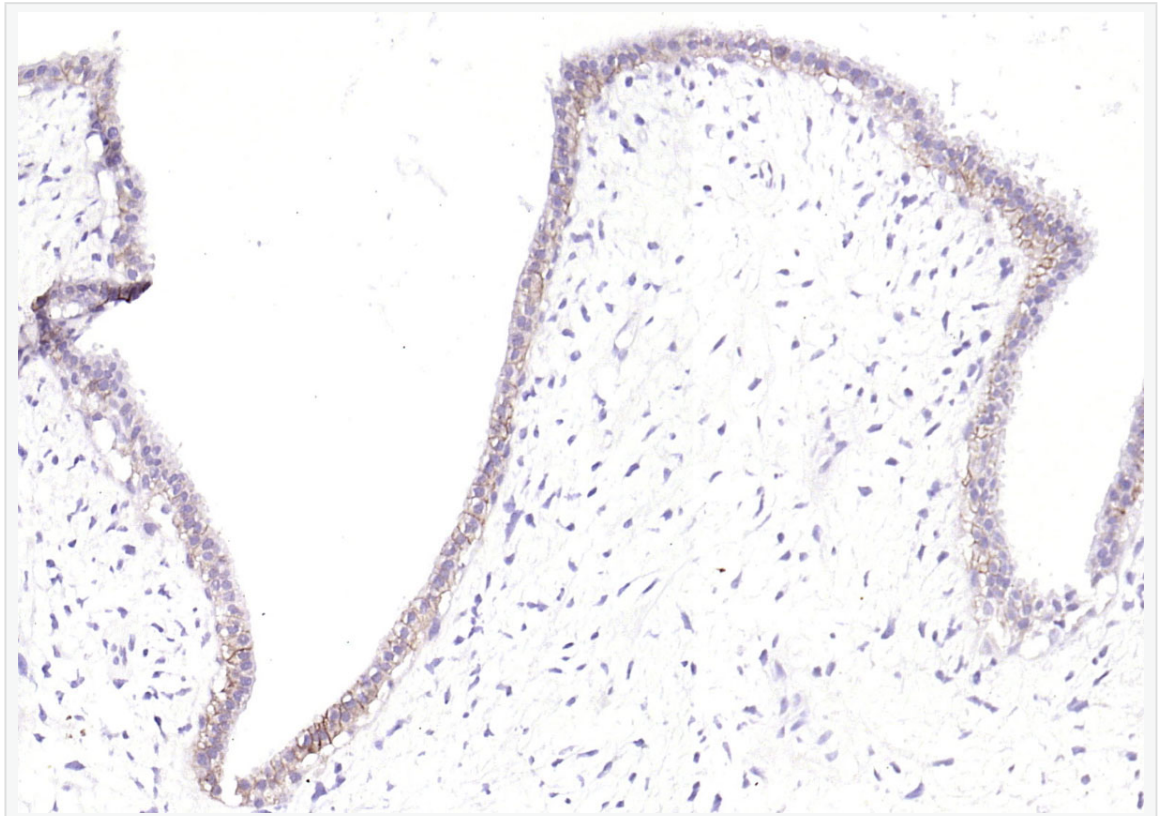
Lane 1: Human TT cell lysates

Primary: Anti-CD239 (SLM-60746R) at 1/1000 dilution

Secondary: IRDye800CW Goat Anti-Rabbit IgG at 1/20000 dilution

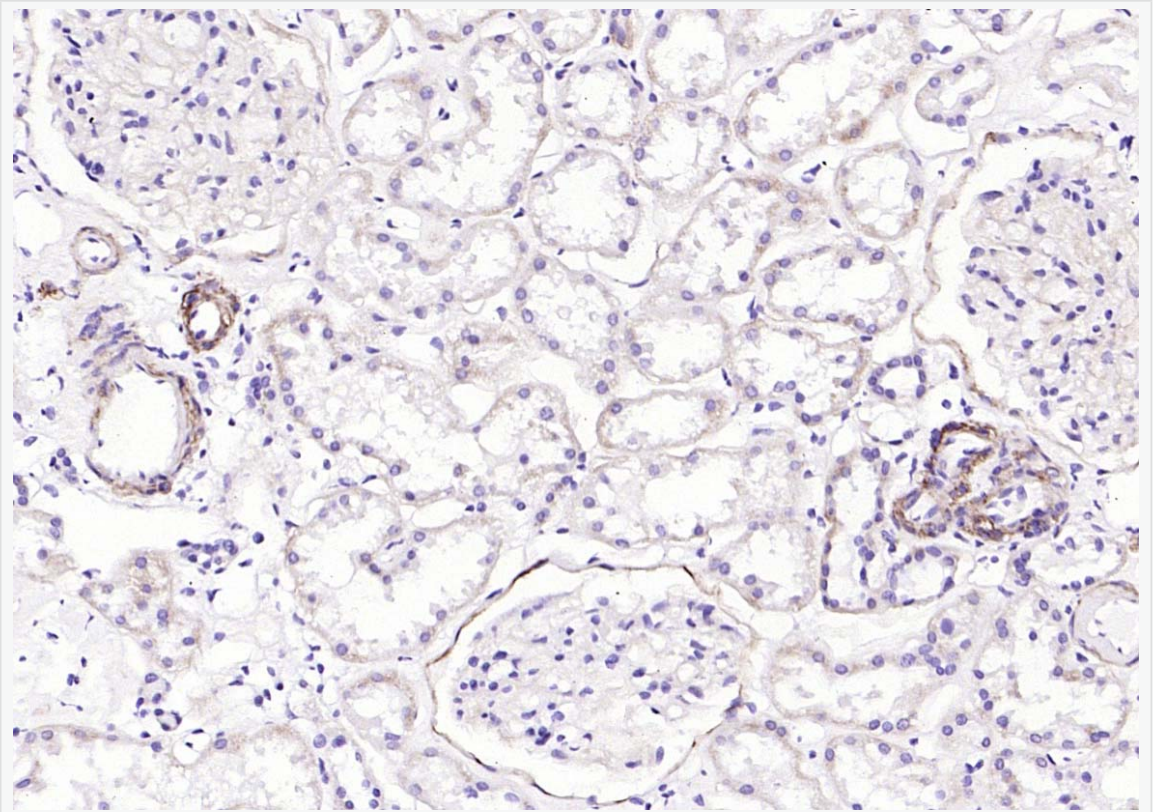
Predicted band size: 64 kDa

Observed band size: 85 kDa

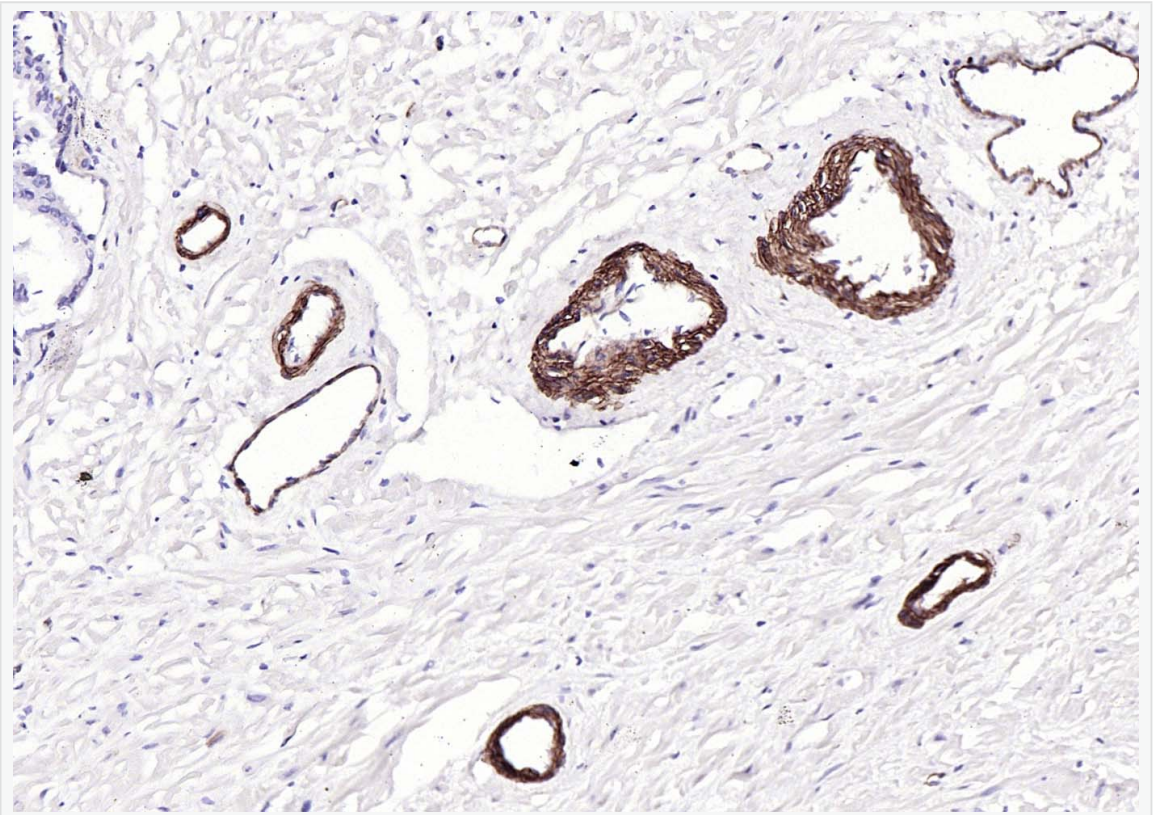


Paraformaldehyde-fixed, paraffin embedded (human breast carcinoma); Antigen retrieval by boiling in sodium citrate buffer (pH6.0) for 15min; Block endogenous peroxidase by 3% hydrogen peroxide for 20 minutes; Blocking buffer (normal goat

serum) at 37°C for 30min; Antibody incubation with (CD239) Monoclonal Antibody, Unconjugated (SLM-60746R) at 1:200 overnight at 4°C, followed by operating according to SP Kit(Rabbit) (sp-0023) instructions and DAB staining.



Paraformaldehyde-fixed, paraffin embedded (Human kidney); Antigen retrieval by boiling in sodium citrate buffer (pH6.0) for 15min; Block endogenous peroxidase by 3% hydrogen peroxide for 20 minutes; Blocking buffer (normal goat serum) at 37°C for 30min; Antibody incubation with (CD239) Monoclonal Antibody, Unconjugated (SLM-60746R) at 1:200 overnight at 4°C, followed by operating according to SP Kit(Rabbit) (sp-0023) instructions and DAB staining.



Paraformaldehyde-fixed, paraffin embedded (Human prostate); Antigen retrieval by boiling in sodium citrate buffer (pH6.0) for 15min; Block endogenous peroxidase by 3% hydrogen peroxide for 20 minutes; Blocking buffer (normal goat serum) at 37°C for 30min; Antibody incubation with (CD239) Monoclonal Antibody, Unconjugated (SLM-60746R) at 1:200 overnight at 4°C, followed by operating according to SP Kit(Rabbit) (sp-0023) instructions and DAB staining.