

Rabbit Anti-PDCD6IP antibody

SLM-60716R

Product Name	PDCD6IP
Chinese Name	程序性细胞死亡 6-相互作用蛋白 Recombinant rabbit monoclonal anti PDC6I_HUMAN; Programmed cell death 6-interacting protein; AIP1; ALIX;
Alias	KIAA1375; PDCD6-interacting protein; ALG-2-interacting protein 1; ALG-2-interacting protein X; Hp95;
Research Area	Cell biology Signal transduction Apoptosis transcriptional regulatory factor
Immunogen Species	Rabbit
Clonality	Monoclonal
Clone NO.	R4B8
React Species	Human,Mouse(predicted:Rat) WB=1:5000-10000,IHC-P=1:100-500,IHC-F=1:100-500,IF=1:100-500 (Paraffin sections need antigen repair)
Applications	not yet tested in other applications. optimal dilutions/concentrations should be determined by the end user.
Theoretical molecular weight	95 kDa
Cellular localization	cytoplasmic
Form	Liquid
Concentration	1mg/ml
immunogen	KLH conjugated synthetic peptide derived from human PDCD6IP
Lsotype	IgG
Purification	affinity purified by Protein A
Buffer Solution	1M TBS(pH7.4) with 1% BSA, 3% Proclin300 and 50% Glycerol.
Storage	Shipped at 4°C. Store at -20 °C for one year. Avoid repeated freeze/thaw cycles.
Attention	This product as supplied is intended for research use only, not for use in human, therapeutic or diagnostic applications.
PubMed	PubMed
Product Detail	This gene encodes a protein that functions within the ESCRT pathway in the

abscission stage of cytokinesis, in intraluminal endosomal vesicle formation, and in enveloped virus budding. Studies using mouse cells have shown that overexpression of this protein can block apoptosis. In addition, the product of this gene binds to the product of the PDCD6 gene, a protein required for apoptosis, in a calcium-dependent manner. This gene product also binds to endophilins, proteins that regulate membrane shape during endocytosis. Overexpression of this gene product and endophilins results in cytoplasmic vacuolization, which may be partly responsible for the protection against cell death. Several alternatively spliced transcript variants encoding different isoforms have been found for this gene. Related pseudogenes have been identified on chromosome 15. [provided by RefSeq, Jan 2012]

Subcellular Location:

Cytoplasm, cytosol. Melanosome. Cytoplasm, cytoskeleton, centrosome. Note=Identified by mass spectrometry in melanosome fractions from stage I to stage IV. Colocalized with CEP55 in the midbody during cytokinesis. Colocalized with CEP55 at centrosomes of non-dividing cells.

SWISS:

Q8WUM4

Gene ID:

10015

Database links:

[Entrez Gene: 10015](#) Human

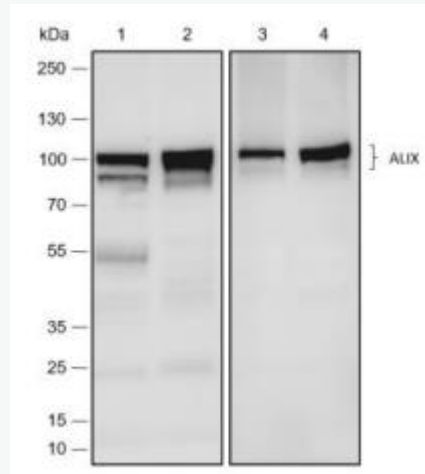
[Entrez Gene: 18571](#) Mouse

[Entrez Gene: 501083](#) Rat

[SwissProt: Q8WUM4](#) Human

[SwissProt: Q9WU78](#) Mouse

[SwissProt: Q9QZA2](#) Rat



Product Picture

Blocking buffer: 5% NFDM/TBST

Primary Ab dilution: 1:10000

Primary Ab incubation condition: 2 hours at
room temperature

Secondary Ab: Goat Anti-Rabbit IgG H&L
(HRP)

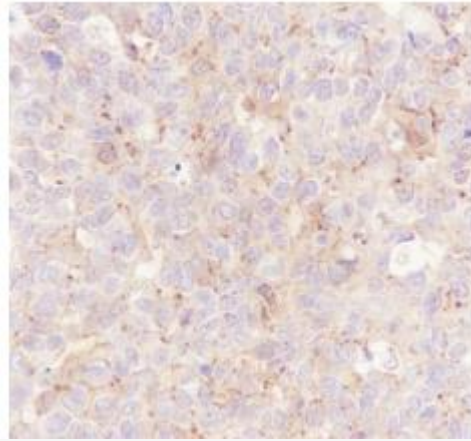
Lysate: 1: HeLa, 2: C6, 3: Mouse brain, 4: Rat
brain

Protein loading quantity: 20 μ g

Exposure time: 60 s

Predicted MW: 96 kDa

Observed MW: 90/100 kDa



Tissue: Human breast cancer

Section type: Formalin-fixed & Paraffin
embedded section

Retrieval method: High temperature and high
pressure

Retrieval buffer: Tris/EDTA buffer, pH 9.0

Primary Ab dilution: 1:500

Primary Ab incubation condition: 1 hour at
room temperature

Secondary Ab: Anti-Rabbit and Mouse

Polymer HRP (Ready to use)

Counter stain: Hematoxylin (Blue)

Comment: Color brown is the positive signal
for SLM-60716R