

Rabbit Anti-COX4I1 antibody

SLM-60712R

Product Name	COX4I1
Chinese Name	细胞色素 c 氧化酶 IVRecombinant rabbit monoclonal anti
Alias	COX4I_HUMAN; Cytochrome c oxidase subunit 4 isoform 1, mitochondrial; COX4; Cytochrome c oxidase polypeptide IV; Cytochrome c oxidase subunit IV isoform 1 (COX IV-1); COX-IV; COX IV; COX 4; COX 4I1;
Research Area	Cell biology immunology Mitochondrion
Immunogen Species	Rabbit
Clonality	Monoclonal
Clone NO.	R8F6
React Species	Human,Mouse(predicted:Rat) WB=1:500-2000,IHC-P=1:100-500,IHC-F=1:100-500,IF=1:100-500 (Paraffin sections need antigen repair)
Applications	not yet tested in other applications. optimal dilutions/concentrations should be determined by the end user.
Theoretical molecular weight	17kDa
Cellular localization	cytoplasmic The cell membrane Mitochondrion
Form	Liquid
Concentration	1mg/ml
immunogen	KLH conjugated synthetic peptide derived from human COX IV
Lsotype	IgG
Purification	affinity purified by Protein A
Buffer Solution	1M TBS(pH7.4) with 1% BSA, 3% Proclin300 and 50% Glycerol.
Storage	Shipped at 4°C. Store at -20 °C for one year. Avoid repeated freeze/thaw cycles.
Attention	This product as supplied is intended for research use only, not for use in human, therapeutic or diagnostic applications.
PubMed	PubMed
Product Detail	Cytochrome c oxidase (COX) is the terminal enzyme of the mitochondrial

respiratory chain. It is a multi-subunit enzyme complex that couples the transfer of electrons from cytochrome c to molecular oxygen and contributes to a proton electrochemical gradient across the inner mitochondrial membrane. The complex consists of 13 mitochondrial- and nuclear-encoded subunits. The mitochondrially-encoded subunits perform the electron transfer and proton pumping activities. The functions of the nuclear-encoded subunits are unknown but they may play a role in the regulation and assembly of the complex. This gene encodes the nuclear-encoded subunit IV isoform 1 of the human mitochondrial respiratory chain enzyme. It is located at the 3' of the NOC4 (neighbor of COX4) gene in a head-to-head orientation, and shares a promoter with it. [provided by RefSeq, Jul 2008]

Subcellular Location:

Mitochondrion inner membrane.

Tissue Specificity:

Ubiquitous.

SWISS:

P13073

Gene ID:

1327

Database links:

[Entrez Gene: 1327](#) Human

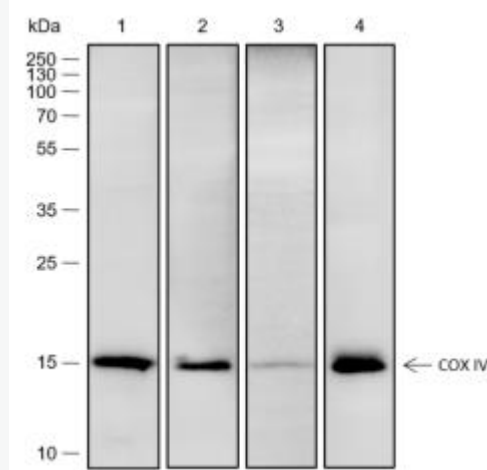
[Entrez Gene: 12857](#) Mouse

[Entrez Gene: 29445](#) Rat

[SwissProt: P13073](#) Human

[SwissProt: P19783](#) Mouse

[SwissProt: P10888](#) Rat



Product Picture

Blocking buffer: 5% NFDN/TBST

Primary Ab dilution: 1:2000

Primary Ab incubation condition: 2 hours at
room temperature

Secondary Ab: Goat Anti-Rabbit IgG H&L
(HRP)

Lysate: 1: Jurkat, 2: MEF, 3: C6, 4: Mouse
heart

Protein loading quantity: 20 μ g

Exposure time: 60 s

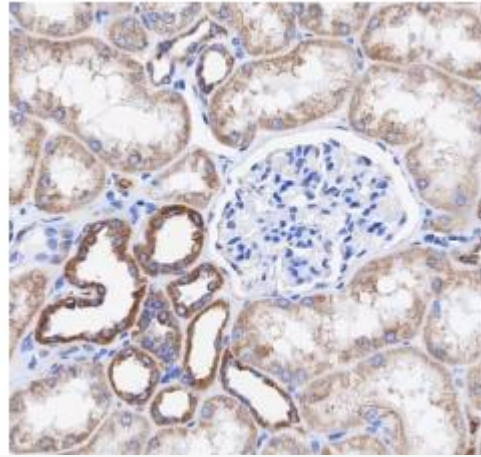
Predicted MW: 20

kDa

Observed MW:

15

kDa



Tissue: Human Kidney

Section type: Formalin-fixed & Paraffin
embedded section

Retrieval method: High temperature and high
pressure

Retrieval buffer: Tris/EDTA buffer, pH 9.0

Primary Ab dilution: 1:500

Primary Ab incubation condition: 1 hour at
room temperature

Secondary Ab: Anti-Rabbit and Mouse

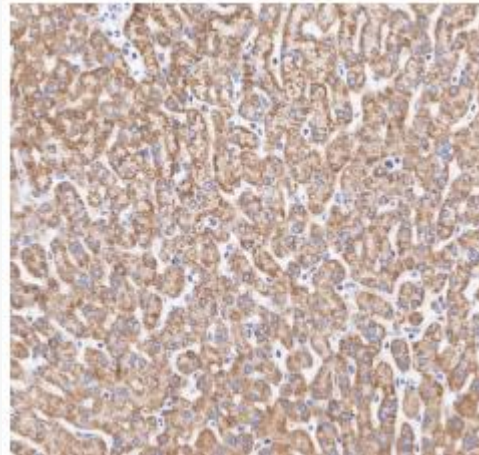
Polymer HRP (Ready to use)

Counter stain: Hematoxylin (Blue)

Comment: Color brown is the positive signal

for

SLM-60712R



Tissue: Human liver

Section type: Formalin-fixed & Paraffin

embedded section

Retrieval method: High temperature and high
pressure

Retrieval buffer: Tris/EDTA buffer, pH 9.0

Primary Ab dilution: 1:500

Primary Ab incubation condition: 1 hour at
room temperature

Secondary Ab: Anti-Rabbit and Mouse

Polymer HRP (Ready to use)

Counter stain:



Hematoxylin (Blue)

Comment: Color brown is the positive signal

for SLM-60712R