

## Rabbit Anti-phospho-IKB Alpha (Ser32 / Ser36)antibody

SLM-60711R

<b>Product Name</b>	phospho-IKB Alpha (Ser32 / Ser36)
<b>Chinese Name</b>	磷酸化核因子 $\kappa$ B 抑制蛋白 $\alpha$ Recombinant rabbit monoclonal anti
<b>Alias</b>	NFKBIA; Inhibitor of KB alpha; I kappa B alpha; I(Kappa)B(alpha); IkappaBalph; IKBA; IKBalpha; MAD 3; MAD3; Major histocompatibility complex enhancer binding protein MAD3; NF kappa B inhibitor alpha; NFKBI; Nuclear factor of kappa light chain gene enhancer in B cells; Nuclear factor of kappa light polypeptide gene enhancer in B cells inhibitor alpha; IKBA_HUMAN; I $\kappa$ B- $\alpha$ ; I $\kappa$ B $\alpha$ .
<b>Product Type</b>	Phosphorylated anti Recombinant rabbit monoclonal anti
<b>Research Area</b>	Cell Surface Molecule lymphocyte b-lymphocyte The cell membrane 蛋白
<b>Immunogen Species</b>	Rabbit
<b>Clonality</b>	Monoclonal
<b>Clone NO.</b>	R8D3
<b>React Species</b>	Human,Mouse,Rat
<b>Applications</b>	WB=1:500-2000,IHC-P=1:50-200,IHC-F=1:50-200,IF=1:50-200 (Paraffin sections need antigen repair) not yet tested in other applications. optimal dilutions/concentrations should be determined by the end user.
<b>Theoretical molecular weight</b>	35kDa
<b>Cellular localization</b>	The nucleus cytoplasmic
<b>Form</b>	Liquid
<b>Concentration</b>	1mg/ml
<b>immunogen</b>	KLH conjugated synthetic peptide derived from human phospho-IKB Alpha (Ser32 / Ser36)
<b>Lsotype</b>	IgG
<b>Purification</b>	affinity purified by Protein A
<b>Buffer Solution</b>	1M TBS(pH7.4) with 1% BSA, 3% Proclin300 and 50% Glycerol.



**Storage**

Shipped at 4°C. Store at -20 °C for one year. Avoid repeated freeze/thaw cycles.

**Attention**

This product as supplied is intended for research use only, not for use in human, therapeutic or diagnostic applications.

**PubMed**

[PubMed](#)

This gene encodes a member of the NF-kappa-B inhibitor family, which contain multiple ankrin repeat domains. The encoded protein interacts with REL dimers to inhibit NF-kappa-B/REL complexes which are involved in inflammatory responses. The encoded protein moves between the cytoplasm and the nucleus via a nuclear localization signal and CRM1-mediated nuclear export. Mutations in this gene have been found in ectodermal dysplasia anhidrotic with T-cell immunodeficiency autosomal dominant disease. [provided by RefSeq, Aug 2011]

**Subcellular Location:**

Cytoplasm. Nucleus.

**Tissue Specificity:**

Highly expressed in lymph node, thymus followed by liver, brain, muscle, kidney, gastrointestinal and reproductive tract.

**Product Detail**

**SWISS:**

Q9Z1E3

**Gene ID:**

4792

**Database links:**

[Entrez Gene: 4792](#) Human

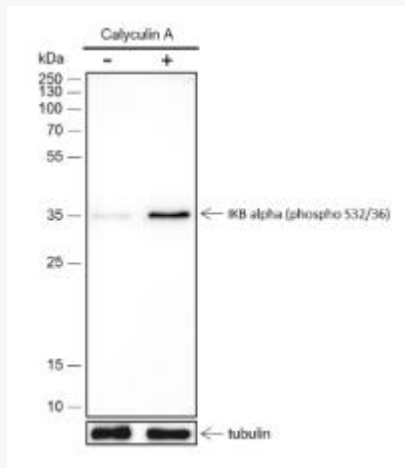
[Entrez Gene: 18035](#) Mouse

[Entrez Gene: 25493](#) Rat

[SwissProt: P25963](#) Human

[SwissProt: Q9Z1E3](#) Mouse

[SwissProt: Q63746](#) Rat



## Product Picture

Blocking buffer: 5% NFDN/TBST

Primary Ab dilution: 1:2000

Primary Ab incubation condition: 2 hours at  
room temperature

Secondary Ab: Goat Anti-Rabbit IgG H&L  
(HRP)

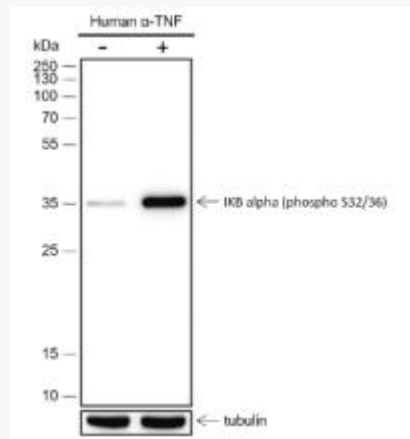
Lysate: (-): C6, (+): C6+ Calyculin A (100nM,  
30min)

Protein loading quantity: 20  $\mu$ g

Exposure time: 60 s

Predicted MW: 36 kDa

Observed MW: 36 kDa



Blocking buffer: 5% NFDN/TBST

Primary Ab dilution: 1:2000

Primary Ab incubation condition: 2 hours at  
room temperature

Secondary Ab: Goat Anti-Rabbit IgG H&L  
(HRP)

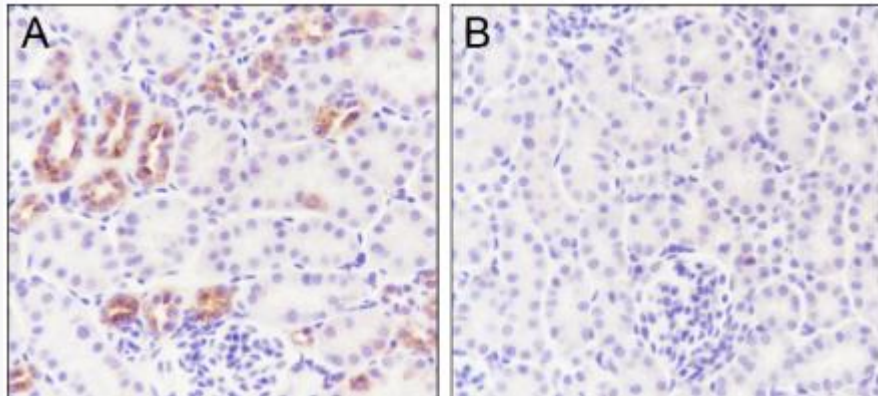
Lysate: (-): HeLa, (+): HeLa+ Human  $\alpha$ -TNF  
(20ng/ml, 30min)

Protein loading quantity: 20  $\mu$ g

Exposure time: 30 s

Predicted MW: 36 kDa

Observed MW: 36 kDa



Tissue: (A) Mouse kidney, (B) Mouse kidney, then the tissue was incubated with alkaline

phosphatase (50 U/ml) at 37°C for 1 hour

Section type: Formalin-fixed & Paraffin-embedded section

Retrieval method: High temperature and high pressure

Retrieval buffer: Tris/EDTA buffer, pH 9.0

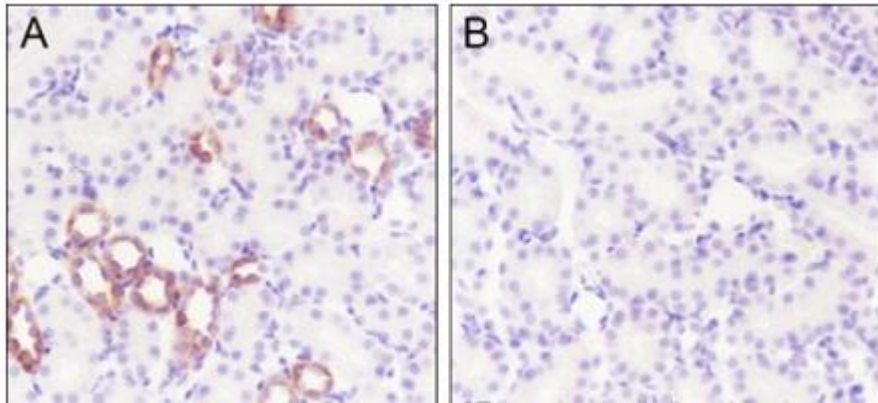
Primary Ab dilution: 1:100

Primary Ab incubation condition: 1 hour at room temperature

Secondary Ab: Anti-Rabbit and Mouse Polymer HRP (Ready to use)

Counter stain: Hematoxylin (Blue)

Comment: Color brown is the positive signal for SLM-60711R



Tissue: (A) Rat kidney, (B) Rat kidney, then the tissue was incubated with alkaline phosphatase (50

U/ml) at 37°C for 1 hour

Section type: Formalin-fixed & Paraffin-embedded section

Retrieval method: High temperature and high pressure

Retrieval buffer: Tris/EDTA buffer, pH 9.0

Primary Ab dilution: 1:100

Primary Ab incubation condition: 1 hour at room temperature

Secondary Ab: Anti-Rabbit and Mouse Polymer HRP (Ready to use)

Counter stain: Hematoxylin (Blue)

Comment: Color brown is the positive signal for

SLM-60711R