

## Rabbit Anti-LILRB1 antibody

SLM-60710R

**Product Name** LILRB1

**Chinese Name** 细胞表面免疫球蛋白样转录因子 2Recombinant rabbit monoclonal anti

**Alias** LIRB1\_HUMAN; Leukocyte immunoglobulin-like receptor subfamily B member 1; ILT2; LIR1; MIR7; LIR-1; Leukocyte immunoglobulin-like receptor 1; CD85 antigen-like family member J; Immunoglobulin-like transcript 2 (ILT-2); Monocyte/macrophage immunoglobulin-like receptor 7 (MIR-7); CD85j;

**Research Area** Cell Surface Molecule lymphocyte b-lymphocyte The cell membrane 蛋白

**Immunogen Species** Rabbit

**Clonality** Monoclonal

**Clone NO.** R8A2

**React Species** Human(predicted:Mouse,Rat)

**Applications** WB=1:500-1000,IHC-P=1:100-500,IHC-F=1:100-500,ICC/IF=1:50-200,IF=1:100-500 (Paraffin sections need antigen repair)  
not yet tested in other applications.  
optimal dilutions/concentrations should be determined by the end user.

**Theoretical molecular weight** 72kDa

**Cellular localization** The cell membrane

**Form** Liquid

**Concentration** 1mg/ml

**immunogen** KLH conjugated synthetic peptide derived from human LILRB1

**Lsotype** IgG

**Purification** affinity purified by Protein A

**Buffer Solution** 1M TBS(pH7.4) with 1% BSA, 3% Proclin300 and 50% Glycerol.

**Storage** Shipped at 4°C. Store at -20 °C for one year. Avoid repeated freeze/thaw cycles.

**Attention** This product as supplied is intended for research use only, not for use in human,

therapeutic or diagnostic applications.

**PubMed**

[PubMed](#)

This gene is a member of the leukocyte immunoglobulin-like receptor (LIR) family, which is found in a gene cluster at chromosomal region 19q13.4. The encoded protein belongs to the subfamily B class of LIR receptors which contain two or four extracellular immunoglobulin domains, a transmembrane domain, and two to four cytoplasmic immunoreceptor tyrosine-based inhibitory motifs (ITIMs). The receptor is expressed on immune cells where it binds to MHC class I molecules on antigen-presenting cells and transduces a negative signal that inhibits stimulation of an immune response. It is thought to control inflammatory responses and cytotoxicity to help focus the immune response and limit autoreactivity. Multiple transcript variants encoding different isoforms have been found for this gene. [provided by RefSeq, Jul 2008]

**Subcellular Location:**

Membrane; Single-pass type I membrane protein.

**Product  
Detail**

**Tissue Specificity:**

Expressed on monocytes and B-cells, and at lower levels on dendritic cells. Detected at low levels in natural killer (NK) cells.

**SWISS:**

Q8NHL6

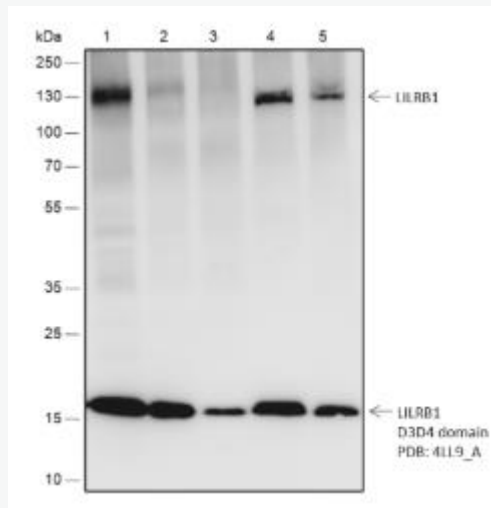
**Gene ID:**

10859

**Database links:**

[Entrez Gene: 10859](#) Human

[SwissProt: Q8NHL6](#) Human



## Product Picture

Blocking buffer: 5% NFDN/TBST

Primary Ab dilution: 1:2000

Primary Ab incubation condition: 2 hours at room temperature

Secondary Ab: Goat Anti-Rabbit IgG H&L (HRP)

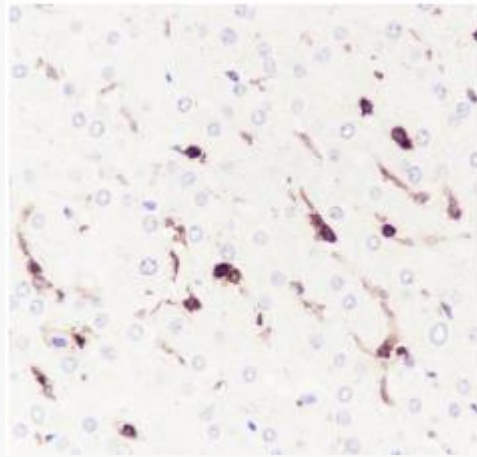
Lysate: 1:THP-1, 2: Ramos, 3: A431, 4: Mouse brain, 5: Rat brain

Protein loading quantity: 20  $\mu$ g

Exposure time: 60 s

Predicted MW: 71 kDa

Observed MW: 115, 19 kDa



Tissue: Human liver

Section type: Formalin-fixed & Paraffin  
embedded section

Retrieval method: High temperature and high  
pressure

Retrieval buffer: Tris/EDTA buffer, pH 9.0

Primary Ab dilution: 1:500

Primary Ab incubation condition: 1 hour at  
room temperature

Secondary Ab: Anti-Rabbit and Mouse

Polymer HRP (Ready to use)

Counter stain:

Hematoxylin (Blue)

Comment: Color brown is the positive signal



SunLong Biotech Co.,LTD  
Tel: 0086-571-56623320 Fax:0086-571-56623318  
E-mail:sales@sunlongbiotech.com  
www.sunlongbiotech.com

for SLM-60710R