

Rabbit Anti-SQSTM1/p62 antibody

SLM-60709R

Product Name SQSTM1/p62

Chinese Name UbiquitinBinding proteinP62Recombinant rabbit monoclonal anti

Alias SQSTM_HUMAN; Sequestosome-1; ORCA; OSIL; EBI3-associated protein of 60 kDa (EBIAP); Phosphotyrosine-independent ligand for the Lck SH2 domain of 62 kDa; Ubiquitin-binding protein

Immunogen Species Rabbit

Clonality Monoclonal

Clone NO. R3F5

React Species Human,Rat,Mouse

WB=1:2000-20000,IHC-P=1:200-1000,IHC-F=1:200-1000,ICC/IF=1:100-500,IF=1:200-1000,ELISA (Paraffin sections need antigen repair)

Applications not yet tested in other applications.
optimal dilutions/concentrations should be determined by the end user.

Theoretical molecular weight 47kDa

Cellular localization The nucleus cytoplasmic

Form Liquid

Concentration 1mg/ml

immunogen KLH conjugated synthetic peptide derived from human SQSTM1/p62

Lsotype IgG

Purification affinity purified by Protein A

Buffer Solution 1M TBS(pH7.4) with 1% BSA, 3% Proclin300 and 50% Glycerol.

Storage Shipped at 4°C. Store at -20 °C for one year. Avoid repeated freeze/thaw cycles.

Attention This product as supplied is intended for research use only, not for use in human, therapeutic or diagnostic applications.

PubMed [PubMed](#)

Product Detail This gene encodes a multifunctional protein that binds ubiquitin and regulates activation of the nuclear factor- κ B signaling pathway. The protein functions as a scaffolding/adaptor protein in concert with TNF receptor-associated protein-1 to mediate activation of NF- κ B in response to upstream signals. Alternatively spliced transcript variants encode

same or different isoforms have been identified for this gene. Mutations in this gene result in sporadic and familial disease of bone. [provided by RefSeq, Mar 2009]

Subcellular Location:

Cytoplasm. Late endosome. Nucleus. Sarcomere. In cardiac muscles localizes to the sarcomeric and late endosomes. May also localize to the nucleus. Accumulates in neurofibrillary tangles and in Lewy neurons from individuals with Alzheimer and Parkinson disease respectively. Enriched in Rosenblatt pilocytic astrocytoma. In liver cells, accumulates in Mallory bodies associated with alcoholic hepatitis disease, indian childhood cirrhosis and in hyaline bodies associated with hepatocellular carcinoma.

Tissue Specificity:

Ubiquitously expressed.

SWISS:

Q13501

Gene ID:

8878

Database links:

[Entrez Gene: 8878](#) Human

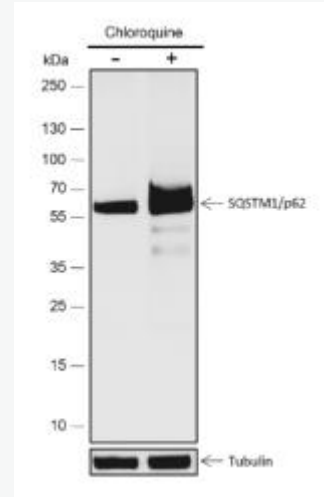
[Entrez Gene: 18412](#) Mouse

[Entrez Gene: 113894](#) Rat

[SwissProt: Q13501](#) Human

[SwissProt: Q64337](#) Mouse

[SwissProt: O08623](#) Rat



Product Picture

Blocking buffer: 5% NFDN/TBST

Primary Ab dilution: 1:10000

Primary Ab incubation condition: 2 hours at room temperature

Secondary Ab: Goat Anti-Rabbit IgG H&L (HRP)

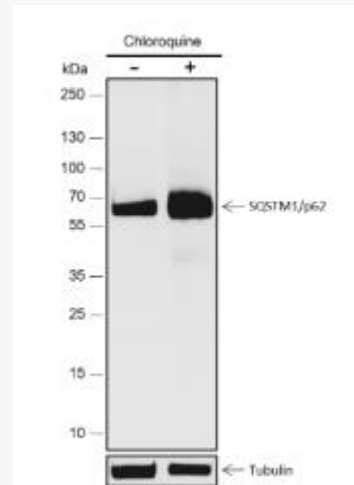
Lysate: (-): HeLa, (+): HeLa+chloroquine (50 mM, 12h)

Protein loading quantity: 20 μ g

Exposure time: 30 s

Predicted MW: 48 kDa

Observed MW: 62 kDa



Blocking buffer: 5% NFDM/TBST

Primary Ab dilution: 1:10000

Primary Ab incubation condition: 2 hours at
room temperature

Secondary Ab: Goat Anti-Rabbit IgG H&L
(HRP)

Lysate: (-): HCT-116, (+): HCT-116

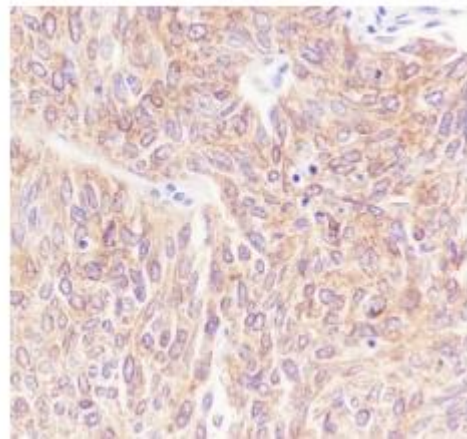
+chloroquine (50 mM, 12h)

Protein loading quantity: 20 μ g

Exposure time: 30 s

Predicted MW: 48 kDa

Observed MW: 62 kDa



Tissue: Human lung squamous carcinoma

Section type: Formalin-fixed & Paraffin
embedded section

Retrieval method: High temperature and high
pressure

Retrieval buffer: Tris/EDTA buffer, pH 9.0

Primary Ab dilution: 1:500

Primary Ab incubation condition: 1 hour at
room temperature

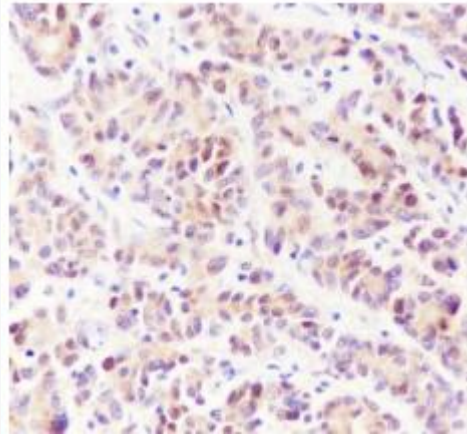
Secondary Ab: Anti-Rabbit and Mouse

Polymer HRP (Ready to use)

Counter stain: Hematoxylin (Blue)

Comment: Color brown is the positive signal
for

SLM-60709R



Tissue: Human colon cancer

Section type: Formalin-fixed & Paraffin
embedded section

Retrieval method: High temperature and high
pressure

Retrieval buffer: Tris/EDTA buffer, pH 9.0

Primary Ab dilution: 1:500

Primary Ab incubation condition: 1 hour at
room temperature

Secondary Ab: Anti-Rabbit and Mouse

Polymer HRP (Ready to use)

Counter stain: Hematoxylin (Blue)

Comment: Color brown is the positive signal



SunLong Biotech Co.,LTD
Tel: 0086-571-56623320 Fax:0086-571-56623318
E-mail:sales@sunlongbiotech.com
www.sunlongbiotech.com

for SLM-60709R