

Rabbit Anti-CHD3 antibody

SLM-60708R

Product Name	CHD3
Chinese Name	ATP 依赖的解旋酶 CHD3Recombinant rabbit monoclonal anti
Alias	CHD3_HUMAN; Chromodomain-helicase-DNA-binding protein 3; EC:3.6.4.12; CHD-3; ATP-dependent helicase CHD3; Mi-2 autoantigen 240 kDa protein; Mi2-alpha; Zinc finger helicase (hZFH);
Research Area	Cell biology Chromatin and nuclear signals Epigenetics
Immunogen Species	Rabbit
Clonality	Monoclonal
Clone NO.	R3C6
React Species	Human
Applications	ICC/IF=1:50-200,Flow-Cyt=1:50-100 (Paraffin sections need antigen repair) not yet tested in other applications. optimal dilutions/concentrations should be determined by the end user.
Theoretical molecular weight	226kDa
Cellular localization	The nucleus cytoplasmic
Form	Liquid
Concentration	1mg/ml
immunogen	KLH conjugated synthetic peptide derived from human CHD3
Lsotype	IgG
Purification	affinity purified by Protein A
Buffer Solution	1M TBS(pH7.4) with 1% BSA, 3% Proclin300 and 50% Glycerol.
Storage	Shipped at 4°C. Store at -20 °C for one year. Avoid repeated freeze/thaw cycles.
Attention	This product as supplied is intended for research use only, not for use in human, therapeutic or diagnostic applications.
PubMed	PubMed
Product Detail	This gene encodes a member of the CHD family of proteins which are characterized

by the presence of chromo (chromatin organization modifier) domains and SNF2-related helicase/ATPase domains. This protein is one of the components of a histone deacetylase complex referred to as the Mi-2/NuRD complex which participates in the remodeling of chromatin by deacetylating histones. Chromatin remodeling is essential for many processes including transcription. Autoantibodies against this protein are found in a subset of patients with dermatomyositis. Three alternatively spliced transcripts encoding different isoforms have been described. [provided by RefSeq, Jul 2008]

Subcellular Location:

Nucleus. Cytoplasm, cytoskeleton, centrosome. Note=Associates with centrosomes in interphase and mitosis.

SWISS:

Q12873

Gene ID:

1107

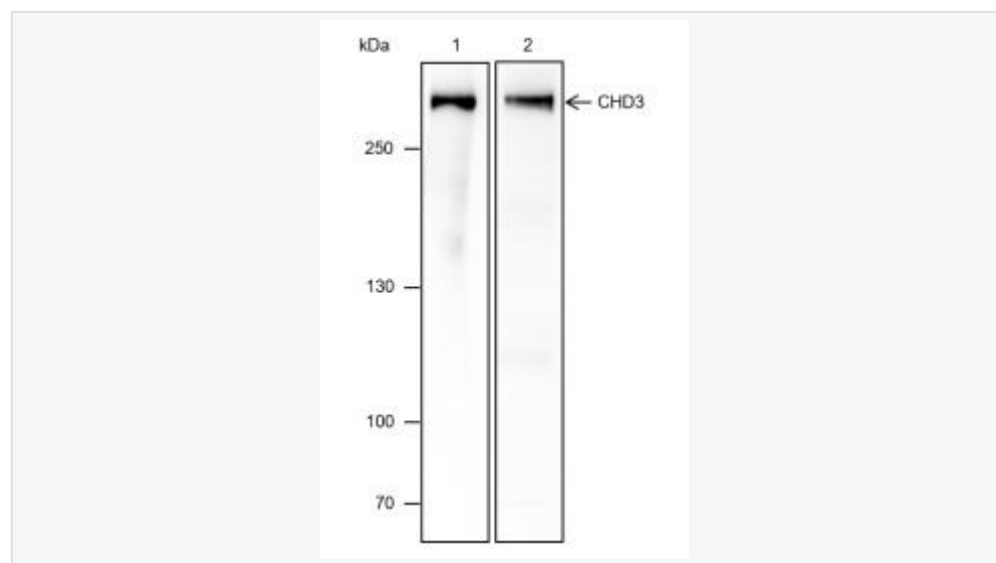
Database links:

[Entrez Gene: 1107](#) Human

[Entrez Gene: 303241](#) Rat

[SwissProt: Q12873](#) Human

Product Picture



Blocking buffer: 5% NFDM/TBST

Primary Ab dilution: 1:1000

Primary Ab incubation condition: 2 hours at
room temperature

Secondary Ab: Goat Anti-Rabbit IgG H&L
(HRP)

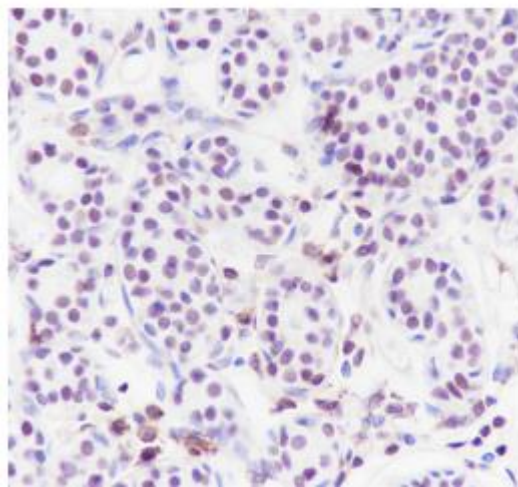
Lysate: 1: C6, 2: HeLa

Protein loading quantity: 20 μ g

Exposure time: 1: 60 s, 2: 30 s

Predicted MW: 227 kDa

Observed MW: 260 kDa



Tissue: Human breast

Section type: Formalin-fixed & Paraffin

-embedded section

Retrieval method: High temperature and high pressure

Retrieval buffer: Tris/EDTA buffer, pH 9.0

Primary Ab dilution: 1:100

Primary Ab incubation condition: 1 hour at room temperature

Secondary Ab: Anti-Rabbit and Mouse

Polymer HRP (Ready to use)

Counter stain: Hematoxylin (Blue)

Comment: Color brown is the positive signal for

SLM-60708R