

## Rabbit Anti-Alpha Tubulin (Acetyl-Lys40)antibody

SLM-60706R

**Product Name** Alpha Tubulin (Acetyl-Lys40)

**Chinese Name** 乙酰化微管蛋白  $\alpha$ /Tubulin  $\alpha$ Recombinant rabbit monoclonal anti

**Alias**

Alpha tubulin 1; Alpha-tubulin 1; Detyrosinated alpha Tubulin; FLJ30169; H2 alpha; TBA4A\_HUMAN; TBA1A\_HUMAN; TBA1B\_HUMAN; Testis specific alpha tubulin; Testis-specific alpha-tubulin; TUBA 4A; TUBA1; Tuba4a; Tubulin alpha 1 (testis specific); Tubulin alpha 1; Tubulin alpha 1 chain; Tubulin alpha 4a; Tubulin alpha 4A chain; Tubulin alpha-1 chain; Tubulin alpha-4A chain; Tubulin H2 alpha; Tubulin H2-alpha; TUBA4A;  $\alpha$  tubulin.

**Product Type** Acetylated anti Recombinant rabbit monoclonal anti

**Research Area** Cell biology Chromatin and nuclear signals Epigenetics

**Immunogen Species** Rabbit

**Clonality** Monoclonal

**Clone NO.** R2A9

**React Species** Human,Mouse,Rat

**Applications**

WB=1:1000-5000,IHC-P=1:100-500,IHC-F=1:100-500,ICC/IF=1:50-200,IF=1:100-500  
(Paraffin sections need antigen repair)  
not yet tested in other applications.  
optimal dilutions/concentrations should be determined by the end user.

**Theoretical molecular weight** 50kDa

**Cellular localization** cytoplasmic

**Form** Liquid

**Concentration** 1mg/ml

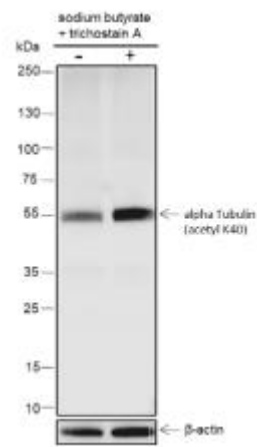
**immunogen** KLH conjugated synthetic peptide derived from human Alpha Tubulin (Acetyl-Lys40): SD(Ac-K)TI

**Lsotype** IgG



---

<b>Purification</b>	affinity purified by Protein A
<b>Buffer Solution</b>	1M TBS(pH7.4) with 1% BSA, 3% Proclin300 and 50% Glycerol.
<b>Storage</b>	Shipped at 4°C. Store at -20 °C for one year. Avoid repeated freeze/thaw cycles.
<b>Attention</b>	This product as supplied is intended for research use only, not for use in human, therapeutic or diagnostic applications.
<b>PubMed</b>	<a href="#">PubMed</a> Microtubules of the eukaryotic cytoskeleton perform essential and diverse functions and are composed of a heterodimer of alpha and beta tubulin. The genes encoding these microtubule constituents are part of the tubulin superfamily, which is composed of six distinct families. Genes from the alpha, beta and gamma tubulin families are found in all eukaryotes. The alpha and beta tubulins represent the major components of microtubules, while gamma tubulin plays a critical role in the nucleation of microtubule assembly. There are multiple alpha and beta tubulin genes and they are highly conserved among and between species. This gene encodes an alpha tubulin that is a highly conserved homolog of a rat testis-specific alpha tubulin. Alternatively spliced transcript variants encoding different isoforms have been found for this gene. [provided by RefSeq, Jun 2013]
	<b>Subcellular Location:</b> Cytoplasm, cytoskeleton.
	<b>Tissue Specificity:</b> Widely expressed. Overexpressed in Platelet, Brain, and Frontal cortex
<b>Product Detail</b>	<b>SWISS:</b> P68366  <b>Gene ID:</b> 7277  <b>Database links:</b>  <a href="#">Entrez Gene: 7277</a> Human  <a href="#">Entrez Gene: 22145</a> Mouse  <a href="#">Entrez Gene: 316531</a> Rat  <a href="#">SwissProt: P68366</a> Human  <a href="#">SwissProt: P68368</a> Mouse  <a href="#">SwissProt: Q5XIF6</a> Rat



## Product Picture

Blocking buffer: 5% NFDN/TBST

Primary Ab dilution: 1:6000

Primary Ab incubation condition: 2 hours at room temperature

Secondary Ab: Goat Anti-Rabbit IgG H&L (HRP)

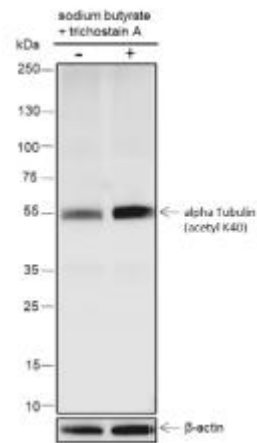
Lysate: 1: Mouse brain, 2: Rat brain

Protein loading quantity: 20  $\mu$ g

Exposure time: 30 s

Predicted MW: 50 kDa

Observed MW: 55 kDa



Blocking buffer: 5% NFDN/TBST

Primary Ab dilution: 1:1000

Primary Ab incubation condition: 2 hours at  
room temperature

Secondary Ab: Goat Anti-Rabbit IgG H&L  
(HRP)

Lysate: (-): MCF-7+serum starvation(14hr), (+):

MCF-7+ sodium butyrate (50mM, 24hr) +

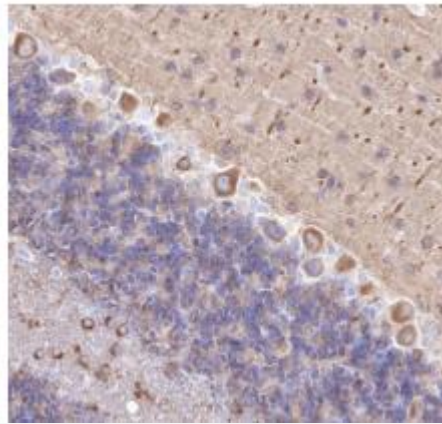
trichostatin A (500ng/ml, 4 hr)

Protein loading quantity: 20  $\mu$ g

Exposure time: 10 s

Predicted MW: 50 kDa

Observed MW: 55 kDa



Tissue: Rat cerebellum

Section type: Formalin-fixed & Paraffin  
embedded section

Retrieval method: High temperature and high  
pressure

Retrieval buffer: Tris/EDTA buffer, pH 9.0

Primary Ab dilution: 1:100

Primary Ab incubation condition: 1 hour at  
room temperature

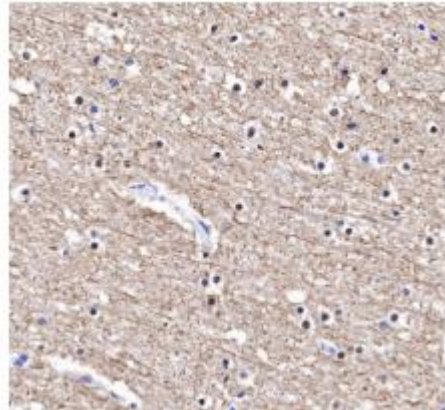
Secondary Ab: Anti-Rabbit and Mouse

Polymer HRP (Ready to use)

Counter stain: Hematoxylin (Blue)

Comment: Color brown is the positive signal  
for

SLM-60706R



Tissue: Human cerebrum

Section type: Formalin-fixed & Paraffin

embedded section

Retrieval method: High temperature and high  
pressure

Retrieval buffer: Tris/EDTA buffer, pH 9.0

Primary Ab dilution: 1:100

Primary Ab incubation condition: 1 hour at  
room temperature

Secondary Ab: Anti-Rabbit and Mouse

Polymer HRP (Ready to use)

Counter stain: Hematoxylin (Blue)

Comment: Color brown is the positive signal



SunLong Biotech Co.,LTD  
Tel: 0086-571-56623320 Fax:0086-571-56623318  
E-mail:sales@sunlongbiotech.com  
www.sunlongbiotech.com

for SLM-60706R