



## Rabbit Anti-RBX1 antibody

SLM-60704R

**Product Name** RBX1**Chinese Name** Ring finger protein75Recombinant rabbit monoclonal anti**Alias**

RBX1\_HUMAN; E3 ubiquitin-protein ligase RBX1; EC:2.3.2.27; EC:2.3.2.32; RNF75; ROC1; ubiquitin-protein transferase RBX1; Protein ZYP; RING finger protein 75; RING-box protein 1 Regulator of cullins 1 (ROC1); E3 ubiquitin-protein ligase RBX1, N-terminally processed; E3 ubiquitin-protein transferase RBX1, N-terminally processed;

**Research Area**

Cell biology Chromatin and nuclear signals Epigenetics

**Immunogen Species**

Rabbit

**Clonality**

Monoclonal

**Clone NO.**

R2D3

**React Species**

Human,Mouse,Rat

**Applications**WB=1:500-2000,IHC-P=1:100-500,IHC-F=1:100-500,ICC/IF=1:50-200,IF=1:100-500,Flow-Cytometry  
(Paraffin sections need antigen repair)  
not yet tested in other applications.  
optimal dilutions/concentrations should be determined by the end user.**Theoretical molecular weight**

12kDa

**Cellular localization**

The nucleus cytoplasmic

**Form**

Liquid

**Concentration** 1mg/ml**immunogen**

KLH conjugated synthetic peptide derived from human RBX1

**Lsotype**

IgG

**Purification**

affinity purified by Protein A

**Buffer Solution**

1M TBS(pH7.4) with 1% BSA, 3% Proclin300 and 50% Glycerol.

**Storage**

Shipped at 4°C. Store at -20 °C for one year. Avoid repeated freeze/thaw cycles.

**Attention**

This product as supplied is intended for research use only, not for use in human, therapeutic or diagnostic

**PubMed**

applications.

[PubMed](#)

This locus encodes a RING finger-like domain-containing protein. The encoded protein interacts with cullin and likely plays a role in ubiquitination processes necessary for cell cycle progression. This protein may also be involved in protein turnover. Related pseudogenes exist on chromosomes 2 and 5.[provided by RefSeq, Sep 2010]

**Subcellular Location:**

Cytoplasm. Nucleus.

**Tissue Specificity:**

Widely expressed.

**SWISS:**

P62877

**Product  
Detail**

**Gene ID:**

9978

**Database links:**

[Entrez Gene: 9978](#) Human

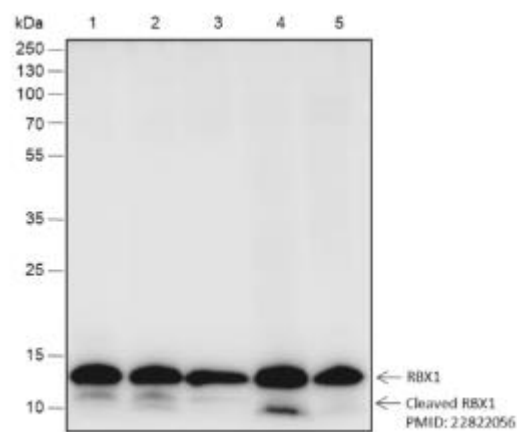
[Entrez Gene: 56438](#) Mouse

[Entrez Gene: 300084](#) Rat

[SwissProt: P62877](#) Human

[SwissProt: P62878](#) Mouse

**Product  
Picture**



Blocking buffer: 5% NFDM/TBST

Primary Ab dilution: 1:2000

Primary Ab incubation condition: 2 hours at  
room temperature

Secondary Ab: Goat Anti-Rabbit IgG H&L  
(HRP)

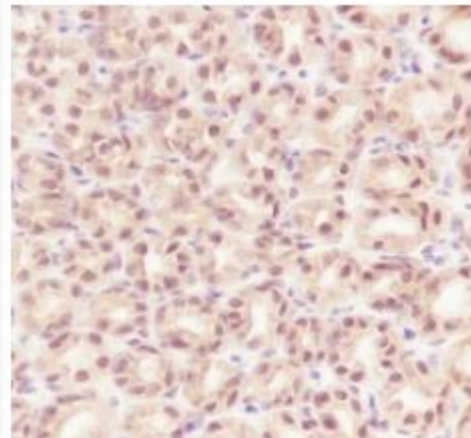
Lysate: 1: HeLa, 2: HepG2, 3: HEK-293, 4:  
NIH/3T3, 5: PC-12

Protein loading quantity: 20  $\mu$ g

Exposure time: 60 s

Predicted MW: 12 kDa

Observed MW: 12 kDa



Tissue: Rat stomach

Section type: Formalin-fixed & Paraffin

embedded section

Retrieval method: High temperature and high pressure

Retrieval buffer: Tris/EDTA buffer, pH 9.0

Primary Ab dilution: 1:500

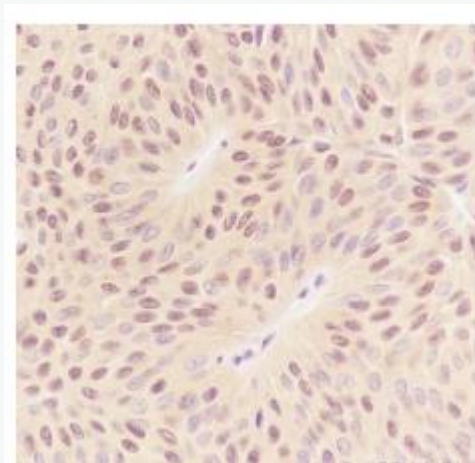
Primary Ab incubation condition: 1 hour at room temperature

Secondary Ab: Anti-Rabbit and Mouse

Polymer HRP (Ready to use)

Counter stain: Hematoxylin (Blue)

Comment: Color brown is the positive signal for SLM-60704R



Tissue: Human bladder cancer

Section type: Formalin-fixed & Paraffin

embedded section

Retrieval method: High temperature and high pressure

Retrieval buffer: Tris/EDTA buffer, pH 9.0

Primary Ab dilution: 1:500

Primary Ab incubation condition: 1 hour at room temperature

Secondary Ab: Anti-Rabbit and Mouse

Polymer HRP (Ready to use)

Counter stain: Hematoxylin (Blue)

Comment: Color brown is the positive signal for SLM-60703R