

## Rabbit Anti-IGFBP3 antibody

SLM-60703R

<b>Product Name</b>	IGFBP3
<b>Chinese Name</b>	胰岛素样生长因子 Binding protein3Recombinant rabbit monoclonal anti
<b>Alias</b>	IBP3_HUMAN; Insulin-like growth factor-binding protein 3; IBP3; IBP-3; IGF-binding protein 3; IGFBP-3; IBP3; BP-53;
<b>Research Area</b>	Tumour Cell biology immunology Signal transduction Growth factors and hormones transcriptional regulatory factor glycoprotein TumourCell biologyMaker
<b>Immunogen Species</b>	Rabbit
<b>Clonality</b>	Monoclonal
<b>Clone NO.</b>	R3G6
<b>React Species</b>	Human WB=1:500-2000
<b>Applications</b>	not yet tested in other applications. optimal dilutions/concentrations should be determined by the end user.
<b>Theoretical molecular weight</b>	30-35kDa
<b>Cellular localization</b>	Secretory protein
<b>Form</b>	Liquid
<b>Concentration</b>	1mg/ml
<b>immunogen</b>	KLH conjugated synthetic peptide derived from human IGFBP3
<b>Lsotype</b>	IgG
<b>Purification</b>	affinity purified by Protein A
<b>Buffer Solution</b>	1M TBS(pH7.4) with 1% BSA, 3% Proclin300 and 50% Glycerol.
<b>Storage</b>	Shipped at 4°C. Store at -20 °C for one year. Avoid repeated freeze/thaw cycles.
<b>Attention</b>	This product as supplied is intended for research use only, not for use in human, therapeutic or diagnostic applications.
<b>PubMed</b>	<a href="#">PubMed</a>
<b>Product Detail</b>	This gene is a member of the insulin-like growth factor binding protein (IGFBP) family

and encodes a protein with an IGFBP domain and a thyroglobulin type-I domain. The protein forms a ternary complex with insulin-like growth factor acid-labile subunit (IGFALS) and either insulin-like growth factor (IGF) I or II. In this form, it circulates in the plasma, prolonging the half-life of IGFs and altering their interaction with cell surface receptors. Alternate transcriptional splice variants, encoding different isoforms, have been characterized. [provided by RefSeq, Jul 2008]

**Subcellular Location:**

Secreted.

**Tissue Specificity:**

Expressed by most tissues. Present in plasma.

**SWISS:**

P17936

**Gene ID:**

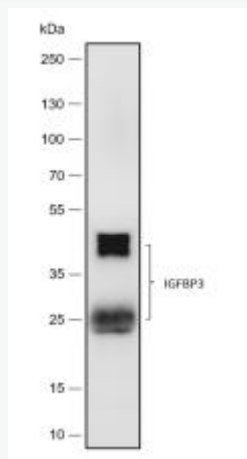
3486

**Database links:**

[Entrez Gene: 3486](#) Human

[SwissProt: P17936](#) Human

**Product Picture**



Blocking buffer: 5% NFDM/TBST

Primary Ab dilution: 1:2000

Primary Ab incubation condition: 2 hours at  
room temperature

Secondary Ab: Goat Anti-Rabbit IgG H&L  
(HRP)

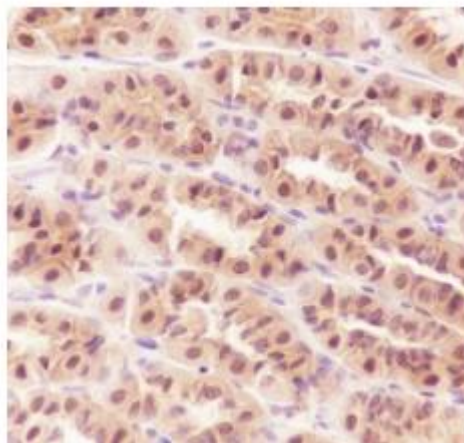
Lysate: Human plasma

Protein loading quantity: 20  $\mu$ g

Exposure time: 60 s

Predicted MW: 32 kDa

Observed MW: 26, 43 kDa



Tissue: Mouse stomach

Section type: Formalin-fixed & Paraffin  
embedded section

Retrieval method: High temperature and high  
pressure

Retrieval buffer: Tris/EDTA buffer, pH 9.0

Primary Ab dilution: 1:500

Primary Ab incubation condition: 1 hour at  
room temperature

Secondary Ab: Anti-Rabbit and Mouse

Polymer HRP (Ready to use)

Counter stain: Hematoxylin (Blue)

Comment: Color brown is the positive signal  
for

SLM-60703R