

Rabbit Anti-AKT1 / AKT2 / AKT3 antibody

SLM-60702R

Product Name	AKT1 / AKT2 / AKT3
Chinese Name	蛋白激酶 AKT1,2,3Recombinant rabbit monoclonal anti AKT1 (phospho T308); AKT2 (phospho T309); AKT3 (phospho T305); p-AKT1 (phospho T308); p-AKT2 (phospho T309); p-AKT3 (phospho T305); AKT 1; AKT; AKT1; AKT-1; AKT1_HUMAN; AKT 2; AKT2; AKT-2; AKT2_HUMAN; AKT 3; AKT3; AKT-3; AKT3_HUMAN; C AKT; cAKT; MGC9965; MGC99656; Oncogene AKT1; PKB; PKB alpha;
Alias	PKB-ALPHA; PKB beta; PKB gamma; PRKBA; Protein Kinase B Alpha; Protein kinase B; Proto-oncogene c-Akt; RAC Alpha; RAC alpha serine/threonine protein kinase; RAC; RAC PK Alpha; Rac protein kinase alpha; RAC Serine/Threonine Protein Kinase; RAC-alpha serine/threonine-protein kinase; RAC-PK-alpha; v akt murine thymoma viral oncogene homolog 1; vAKT Murine Thymoma Viral Oncogene Homolog 1.
Research Area	Tumour Cell biology Neurobiology Signal transduction Apoptosis Kinases and Phosphatases
Immunogen Species	Rabbit
Clonality	Monoclonal
Clone NO.	R2A4
React Species	Human,Mouse,Rat WB=1:500-2000,IHC-P=1:100-500,IHC-F=1:200-500,IF=1:100-500 (Paraffin sections need antigen repair)
Applications	not yet tested in other applications. optimal dilutions/concentrations should be determined by the end user.
Theoretical molecular weight	56kDa
Detection molecular weight	56 kDa
Form	Liquid
Concentration	1mg/ml
immunogen	KLH conjugated synthetic peptide derived from human AKT1 / AKT2 / AKT3



Lsotype	IgG
Purification	affinity purified by Protein A
Buffer Solution	1M TBS(pH7.4) with 1% BSA, 3% Proclin300 and 50% Glycerol.
Storage	Shipped at 4°C. Store at -20 °C for one year. Avoid repeated freeze/thaw cycles.
Attention	This product as supplied is intended for research use only, not for use in human, therapeutic or diagnostic applications.
PubMed	PubMed This gene is a putative oncogene encoding a protein belonging to a subfamily of serine/threonine kinases containing SH2-like (Src homology 2-like) domains. The gene was shown to be amplified and overexpressed in 2 of 8 ovarian carcinoma cell lines and 2 of 15 primary ovarian tumors. Overexpression contributes to the malignant phenotype of a subset of human ductal pancreatic cancers. The encoded protein is a general protein kinase capable of phosphorylating several known proteins. [provided by RefSeq, Jul 2008]
	Subcellular Location: Cytoplasm. Nucleus. Cell membrane; Peripheral membrane protein. Note=Localizes within both nucleus and cytoplasm of proliferative primary myoblasts and mostly within the nucleus of differentiated primary myoblasts. By virtue of the N-terminal PH domain, is recruited to sites of the plasma membrane containing increased PI(3,4,5)P3 or PI(3,4)P2.
	Post-translational modifications: Note=Defects in AKT2 are a cause of susceptibility to breast cancer (BC). AKT2 promotes metastasis of tumor cells without affecting the latency of tumor development. With AKT3, plays also a pivotal role in the biology of glioblastoma. Diabetes mellitus, non-insulin-dependent (NIDDM) [MIM:125853]: A multifactorial disorder of glucose homeostasis caused by a lack of sensitivity to the body's own insulin. Affected individuals usually have an obese body habitus and manifestations of a metabolic syndrome characterized by diabetes, insulin resistance, hypertension and hypertriglyceridemia. The disease results in long-term complications that affect the eyes, kidneys, nerves, and blood vessels. Note=The disease is caused by mutations affecting the gene represented in this entry. Hypoinsulinemic hypoglycemia with hemihypertrophy (HIHGHH) [MIM:240900]: A disorder characterized by hypoglycemia, low insulin levels, low serum levels of ketone bodies and branched-chain amino acids, left-sided hemihypertrophy, neonatal macrosomia, reduced consciousness and hypoglycemic seizures. Note=The disease is caused by mutations affecting the gene represented in this entry.
Product Detail	

Similarity:

Belongs to the protein kinase superfamily. AGC Ser/Thr protein kinase family. RAC subfamily.

Contains 1 AGC-kinase C-terminal domain.

Contains 1 PH domain.

Contains 1 protein kinase domain.

SWISS:

P31751

Gene ID:

208

Database links:

[Entrez Gene: 208](#) Human

[Entrez Gene: 11652](#) Mouse

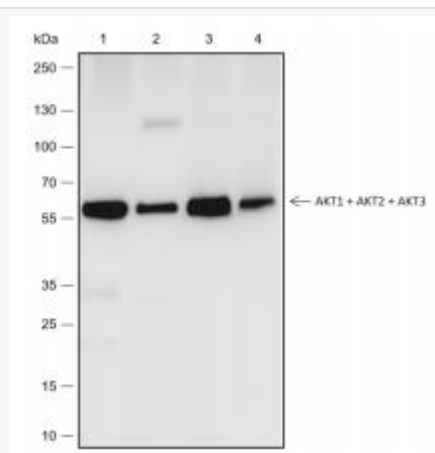
[Entrez Gene: 25233](#) Rat

[SwissProt: P31751](#) Human

[SwissProt: Q60823](#) Mouse

[SwissProt: P47197](#) Rat

Product Picture



Blocking buffer: 5% NFDN/TBST

Primary Ab dilution: 1:2000

Primary Ab incubation condition: 2 hours at
room temperature

Secondary Ab: Goat Anti-Rabbit IgG H&L
(HRP)

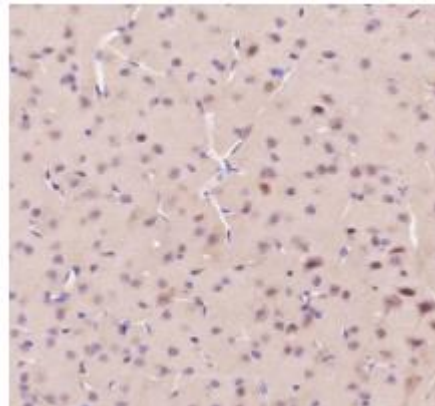
Lysate: 1: MCF-7, 2: HeLa, 3: Mouse brain, 4:
Rat brain

Protein loading quantity: 20 μ g

Exposure time: 60 s

Predicted MW: 56 kDa

Observed MW: 56 kDa



Tissue: Rat cerebrum

Section type: Formalin-fixed & Paraffin
embedded section

Retrieval method: High temperature and high

pressure

Retrieval buffer: Tris/EDTA buffer, pH 9.0

Primary Ab dilution: 1:1000

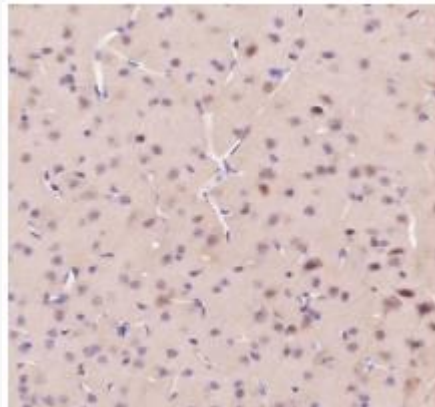
Primary Ab incubation condition: 1 hour at
room temperature

Secondary Ab: Anti-Rabbit and Mouse

Polymer HRP (Ready to use)

Counter stain: Hematoxylin (Blue)

Comment: Color brown is the positive signal
for SLM-60702R



Tissue: Mouse cerebrum

Section type: Formalin-fixed & Paraffin
embedded section

Retrieval method: High temperature and high
pressure

Retrieval buffer: Tris/EDTA buffer, pH 9.0

Primary Ab dilution: 1:1000

Primary Ab incubation condition: 1 hour at
room temperature

Secondary Ab: Anti-Rabbit and Mouse

Polymer HRP (Ready to use)

Counter stain:

Hematoxylin (Blue)

Comment:

Color brown is the positive signal
for SLM-60702R