

Rabbit Anti-CK18 antibody

SLM-60699R

Product Name	CK18
Chinese Name	细胞角蛋白 18Recombinant rabbit monoclonal anti
Alias	K1C18_HUMAN; Keratin, type I cytoskeletal 18; KRT18; CYK18; Cell proliferation-inducing gene 46 protein; Cytokeratin-18 (CK-18); Keratin-18 (K18); PIG46; Keratin 18;
Research Area	Tumour immunology Signal transduction TumourCell biologyMaker
Immunogen Species	Rabbit
Clonality	Monoclonal
Clone NO.	R2G7
React Species	Human
Applications	WB=1:500-1000,IHC-P=1:50-200,IHC-F=1:50-200,IF=1:50-200 (Paraffin sections need antigen repair) not yet tested in other applications. optimal dilutions/concentrations should be determined by the end user.
Theoretical molecular weight	48kDa
Cellular localization	The nucleus cytoplasmic
Form	Liquid
Concentration	1mg/ml
immunogen	KLH conjugated synthetic peptide derived from human CK18
Lsotype	IgG
Purification	affinity purified by Protein A
Buffer Solution	1M TBS(pH7.4) with 1% BSA, 3% Proclin300 and 50% Glycerol.
Storage	Shipped at 4°C. Store at -20 °C for one year. Avoid repeated freeze/thaw cycles.
Attention	This product as supplied is intended for research use only, not for use in human, therapeutic or diagnostic applications.
PubMed	PubMed
Product Detail	KRT18 encodes the type I intermediate filament chain keratin 18. Keratin 18,

together with its filament partner keratin 8, are perhaps the most commonly found members of the intermediate filament gene family. They are expressed in single layer epithelial tissues of the body. Mutations in this gene have been linked to cryptogenic cirrhosis. Two transcript variants encoding the same protein have been found for this gene. [provided by RefSeq, Jul 2008]

SWISS:
P05783

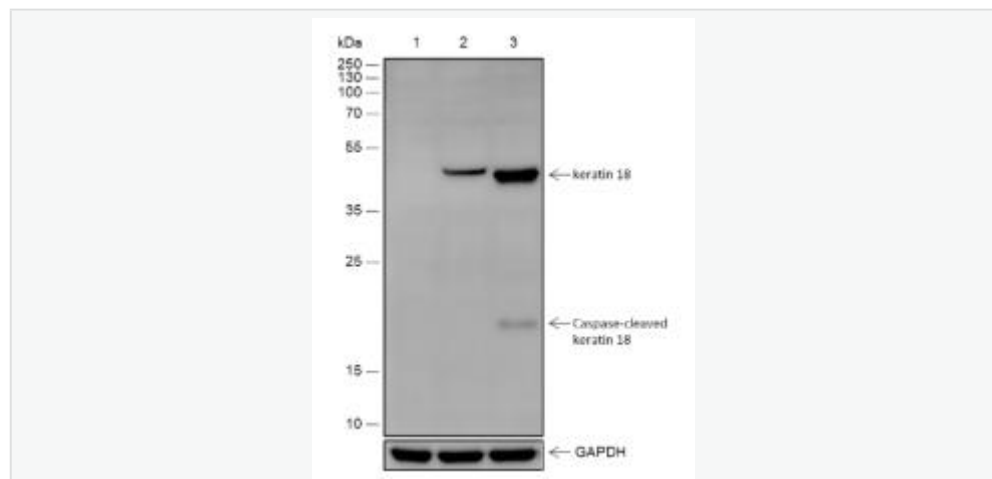
Gene ID:
3875

Database links:

[Entrez Gene: 3875](#) Human

[SwissProt: P05783](#) Human

Product Picture



Blocking buffer: 5% NFDm/TBST

Primary Ab dilution: 1:5000

Primary Ab incubation condition: 2 hours at
room temperature

Secondary Ab: Goat Anti-Rabbit IgG H&L
(HRP)

Lysate: 1: MOLT-4 (Negative control), 2:

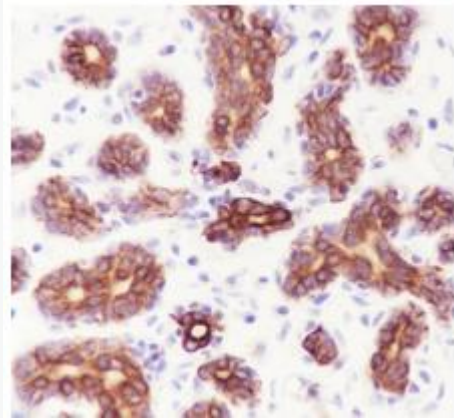
HeLa, 3: HeLa+ staurosporine (1 μ M, 4 h)

Protein loading quantity: 20 μ g

Exposure time: 60 s

Predicted MW: 48 kDa

Observed MW: 48, 22 kDa



Tissue: Human breast

Section type: Formalin-fixed & Paraffin

embedded section

Retrieval method: High temperature and high
pressure

Retrieval buffer: Tris/EDTA buffer, pH 9.0

Primary Ab dilution: 1:100

Primary Ab incubation condition: 1 hour at
room temperature

Secondary Ab: Anti-Rabbit and Mouse

Polymer HRP (Ready to use)

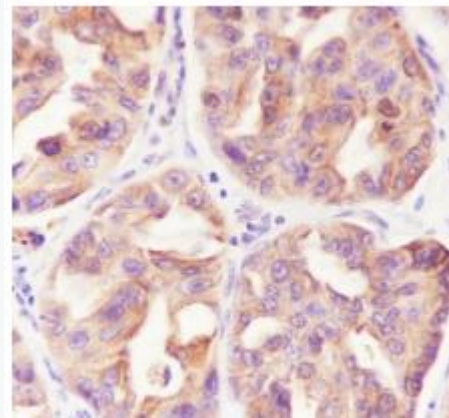
Counter stain:

Hematoxylin (Blue)

Comment: Color brown is the positive signal

for

SLM-60699R



Tissue: Human lung adenocarcinoma

Section type: Formalin-fixed & Paraffin
embedded section

Retrieval method: High temperature and high
pressure

Retrieval buffer: Tris/EDTA buffer, pH 9.0

Primary Ab dilution: 1:100

Primary Ab incubation condition: 1 hour at



room temperature

Secondary Ab: Anti-Rabbit and Mouse

Polymer HRP (Ready to use)

Counter stain: Hematoxylin (Blue)

Comment: Color brown is the positive signal

for

SLM-60699R