

Rabbit Anti-p21 antibody

SLM-60698R

Product Name p21

Chinese Name p21 蛋白 Recombinant rabbit monoclonal anti

Alias CDN1A_HUMAN; Cyclin-dependent kinase inhibitor 1; CDKN1A; CAP20; CDKN1; CIP1; MDA-6; PIC1; SDI1; WAF1; p21CIP1; CDK-interacting protein 1; Melanoma differentiation-associated protein 6 (MDA-6);

Research Area Tumour immunology Signal transduction transcriptional regulatory factor TumourCell biologyM

Immunogen Species Rabbit

Clonality Monoclonal

Clone NO. R5H7

React Species Human

Applications WB=1:500-2000,IHC-P=1:50-200,IHC-F=1:50-200,IF=1:50-200,ICC/IF=1:50-200,Flow-Cyt=1
(Paraffin sections need antigen repair)
not yet tested in other applications.
optimal dilutions/concentrations should be determined by the end user.

Theoretical molecular weight 18kDa

Cellular localization The nucleus cytoplasmic

Form Liquid

Concentration 1mg/ml

immunogen KLH conjugated synthetic peptide derived from human p21

Lsotype IgG

Purification affinity purified by Protein A

Buffer Solution 1M TBS(pH7.4) with 1% BSA, 3% Proclin300 and 50% Glycerol.

Storage Shipped at 4°C. Store at -20 °C for one year. Avoid repeated freeze/thaw cycles.

Attention This product as supplied is intended for research use only, not for use in human, therapeutic or diagnostic applications.



PubMed

[PubMed](#)

This gene encodes a potent cyclin-dependent kinase inhibitor. The encoded protein binds to and inhibits activity of cyclin-cyclin-dependent kinase2 or -cyclin-dependent kinase4 complexes, and thus functions as a regulator of cell cycle progression at G1. The expression of this gene is tightly controlled by the tumor suppressor protein p53, through which this protein mediates the p53-dependent cell cycle G1 phase arrest in response to a variety of stress stimuli. This protein can interact with proliferating cell nuclear antigen, a DNA polymerase alpha accessory factor, and plays a regulatory role in S phase DNA replication and DNA damage repair. This protein was reported to be specifically cleaved by CASP3-like caspases, which thus leads to a dramatic activation of cyclin-dependent kinase2, and may be instrumental in the execution of apoptosis following caspase activation. Mice that lack this gene have the ability to regenerate damaged or missing tissue. Multiple alternatively spliced variants have been found for this gene. [provided by RefSeq, Sep 2015]

Subcellular Location:

Cytoplasmic and Nuclear.

Tissue Specificity:

Expressed in all adult tissues, with 5-fold lower levels observed in the brain.

SWISS:

P39689

**Product
Detail**

Gene ID:

1026

Database links:

[Entrez Gene: 1026](#) Human

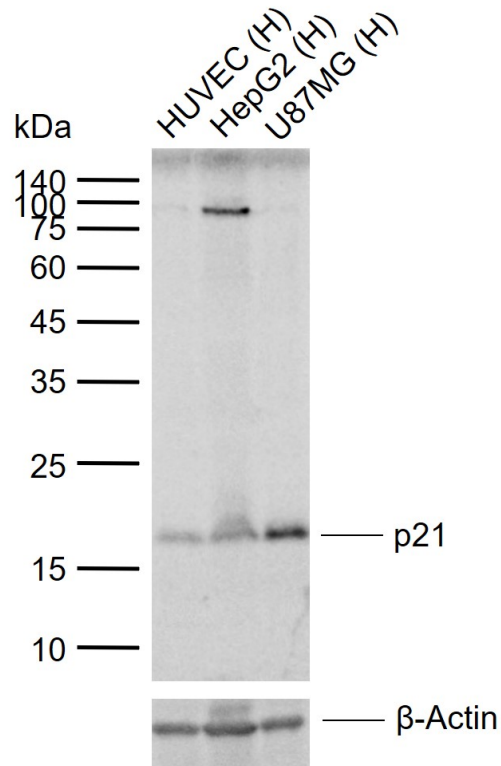
[Entrez Gene: 12575](#) Mouse

[Entrez Gene: 114851](#) Rat

[SwissProt: P38936](#) Human

[SwissProt: P39689](#) Mouse

**Product
Picture**



Sample:

Lane 1: Human HUVEC cell lysates

Lane 2: Human HepG2 cell lysates

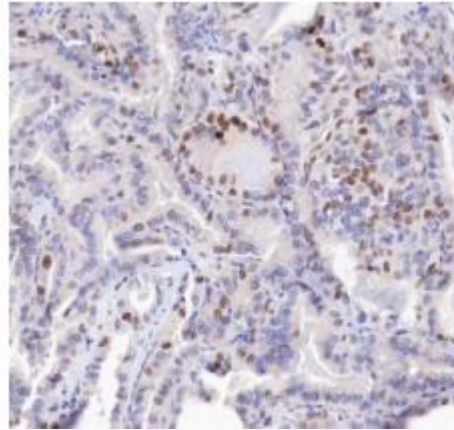
Lane 3: Human U87MG cell lysates

Primary: Anti-p21 (SLM-60698R) at 1/1000 dilution

Secondary: IRDye800CW Goat Anti-Rabbit IgG at 1/20000 dilution

Predicted band size: 18 kDa

Observed band size: 18 kDa



Tissue: Human thyroid carcinoma

Section type: Formalin-fixed & Paraffin
embedded section

Retrieval method: High temperature and high
pressure

Retrieval buffer: Tris/EDTA buffer, pH 9.0

Primary Ab dilution: 1:1000

Primary Ab incubation condition: 1 hour at
room temperature

Secondary Ab: Anti-Rabbit and Mouse

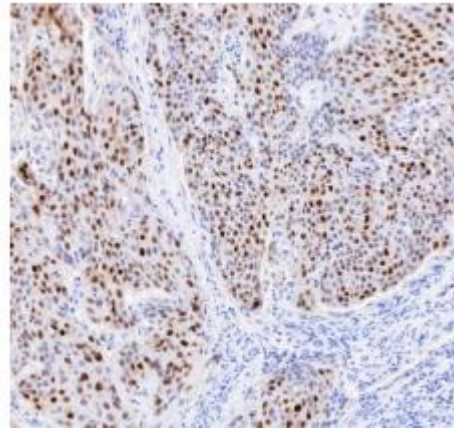
Polymer HRP (Ready to use)

Counter stain:

Hematoxylin (Blue)

Comment: Color brown is the positive signal
for

SLM-60698R



Tissue: Human cervical carcinoma

Section type: Formalin-fixed & Paraffin
embedded section

Retrieval method: High temperature and high
pressure

Retrieval buffer: Tris/EDTA buffer, pH 9.0

Primary Ab dilution: 1:1000

Primary Ab incubation condition: 1 hour at
room temperature

Secondary Ab: Anti-Rabbit and Mouse

Polymer HRP (Ready to use)

Counter stain:

Hematoxylin (Blue)



SunLong Biotech Co.,LTD

Tel: 0086-571-56623320 Fax:0086-571-56623318

E-mail:sales@sunlongbiotech.com

www.sunlongbiotech.com

Comment: Color brown is the positive signal

for

SLM-60698R