

Rabbit Anti-ATG9A antibody

SLM-60696R

Product Name ATG9A

Chinese Name 自噬相关蛋白 9ARecombinant rabbit monoclonal anti

Alias ATG9A_HUMAN; Autophagy-related protein 9A; APG9-like 1; mATG9; APG9L1; MGD3208;

Research Area Tumour Cell biology Signal transduction TumourCell biologyMaker Epigenetics

Immunogen Species Rabbit

Clonality Monoclonal

Clone NO. R4D8

React Species Human,Rat(predicted:Mouse)

WB=1:500-2000,IHC-P=1:50-200,IHC-F=1:50-200,ICC/IF=1:50-200,IF=1:50-200
(Paraffin sections need antigen repair)

Applications not yet tested in other applications.
optimal dilutions/concentrations should be determined by the end user.

Theoretical molecular weight 94kDa

Cellular localization cytoplasmic

Form Liquid

Concentration 1mg/ml

immunogen KLH conjugated synthetic peptide derived from human ATG9A

Lsotype IgG

Purification affinity purified by Protein A

Buffer Solution 1M TBS(pH7.4) with 1% BSA, 3% Proclin300 and 50% Glycerol.

Storage Shipped at 4°C. Store at -20 °C for one year. Avoid repeated freeze/thaw cycles.

Attention This product as supplied is intended for research use only, not for use in human, therapeutic or diagnostic applications.

PubMed [PubMed](#)

Acts upstream of or within autophagosome assembly. Located in endosome; phagophore assembly site; and trans-Golgi network. [provided by Alliance of Genome Resources, Apr 2022]

Subcellular Location:

Cytoplasmic vesicle > autophagosome membrane. Golgi apparatus > trans-Golgi network membrane. Late endosome membrane.

**Product
Detail**

SWISS:
Q7Z3C6

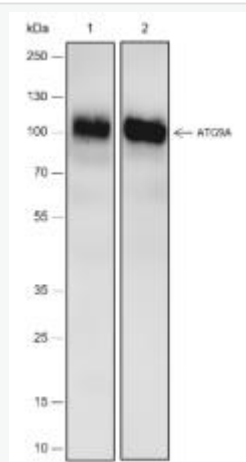
Gene ID:
79065

Database links:

[Entrez Gene: 79065](#) Human

[SwissProt: Q7Z3C6](#) Human

**Product
Picture**



Blocking buffer: 5% NFDM/TBST

Primary Ab dilution: 1:1000

Primary Ab incubation condition: 2 hours at
room temperature

Secondary Ab: Goat Anti-Rabbit IgG H&L

(HRP)

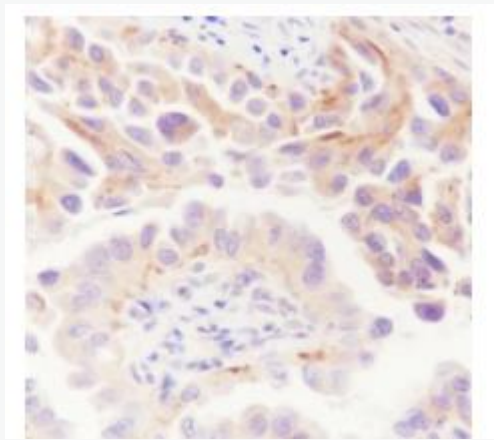
Lysate: 1: HepG2, 2: HeLa

Protein loading quantity: 20 μ g

Exposure time: 60 s

Predicted MW: 94 kDa

Observed MW: 100 kDa



Tissue: Human thyroid cancer

Section type: Formalin-fixed & Paraffin
embedded section

Retrieval method: High temperature and high
pressure

Retrieval buffer: Tris/EDTA buffer, pH 9.0

Primary Ab dilution: 1:100

Primary Ab incubation condition: 1 hour at



room temperature

Secondary Ab: Anti-Rabbit and Mouse

Polymer HRP (Ready to use)

Counter stain: Hematoxylin (Blue)

Comment: Color brown is the positive signal

for SLM-60696R