

## Rabbit Anti-EEF1A1 antibody

SLM-60686R

<b>Product Name</b>	EEF1A1
<b>Chinese Name</b>	翻译延伸因子 EF-1aRecombinant rabbit monoclonal anti
<b>Alias</b>	Elongation factor 1-alpha 1; EF-1-alpha-1; Elongation factor Tu (EF-Tu); Eukaryotic elongation factor 1 A-1 (eEF1A-1); Leukocyte receptor cluster member 7; EF1A1_HUMAN; EEF1A; EF1A; LENG7;
<b>Immunogen Species</b>	Rabbit
<b>Clonality</b>	Monoclonal
<b>Clone NO.</b>	R8F9
<b>React Species</b>	Human,Mouse,Rat
<b>Applications</b>	WB=1:500-2000,IHC-P=1:50-200,IHC-F=1:50-200,IF=1:50-200 not yet tested in other applications. optimal dilutions/concentrations should be determined by the end user.
<b>Theoretical molecular weight</b>	50kDa
<b>Cellular localization</b>	cytoplasmic
<b>Form</b>	Liquid
<b>Concentration</b>	1mg/ml
<b>immunogen</b>	KLH conjugated synthetic peptide derived from human eEF1a1
<b>Lsotype</b>	IgG
<b>Purification</b>	affinity purified by Protein A
<b>Buffer Solution</b>	1M TBS(pH7.4) with 1% BSA, 3% Proclin300 and 50% Glycerol.
<b>Storage</b>	Shipped at 4°C. Store at -20 °C for one year. Avoid repeated freeze/thaw cycles.
<b>Attention</b>	This product as supplied is intended for research use only, not for use in human, therapeutic or diagnostic applications.
<b>PubMed</b>	<a href="#">PubMed</a>
<b>Product Detail</b>	This gene encodes an isoform of the alpha subunit of the elongation factor-1 complex, which is responsible for the enzymatic delivery of aminoacyl tRNAs to the ribosome. This isoform (alpha 1) is expressed in brain, placenta, lung, liver, kidney, and pancreas, and the other isoform (alpha 2) is expressed in brain, heart and

skeletal muscle. This isoform is identified as an autoantigen in 66% of patients with Feltz syndrome. This gene has been found to have multiple copies on many chromosomes, some of which, if not all, represent different pseudogenes. [provided by RefSeq, Jul 2008]

**Subcellular Location:**

Cytoplasm.

**Tissue Specificity:**

Brain, placenta, lung, liver, kidney, pancreas but barely detectable in heart and skeletal muscle

**SWISS:**

P68104

**Gene ID:**

1915

**Database links:**

[Entrez Gene: 1915](#) Human

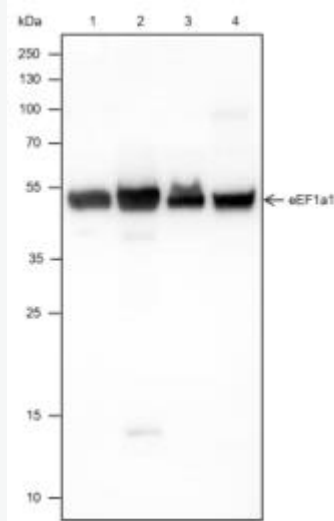
[Entrez Gene: 13627](#) Mouse

[Entrez Gene: 171361](#) Rat

[SwissProt: P68104](#) Human

[SwissProt: P10126](#) Mouse

[SwissProt: P62630](#) Rat



## Product Picture

Blocking buffer: 5% NFDN/TBST

Primary Ab dilution: 1:1000

Primary Ab incubation condition: 2 hours at  
room temperature

Secondary Ab: Goat Anti-Rabbit IgG H&L  
(HRP)

Lysate: 1: MCF7, 2: PANC-1, 3: Neuro-2a, 4:

Rat kidney

Protein loading quantity: 20  $\mu$ g

Exposure time: 10 s

Predicted MW: 50 kDa

Observed MW: 55 kDa