

Rabbit Anti-PDHA1 antibody

SLM-60685R

Product Name PDHA1

Chinese Name Runx3Recombinant rabbit monoclonal anti

Alias Pyruvate dehydrogenase E1 component subunit alpha, somatic form, mitochondrial; ODPH_HUMAN; EC:1.2.4.1; PDHE1-A type I; pyruvate dehydrogenase E1 subunit alpha 1; PDHA; PDHAD; PHE1A; E1alpha; PDHCE1A; PDH-E1 α ;

Research Area Mitochondrion

Immunogen Species Rabbit

Clonality Monoclonal

Clone NO. R9B7

React Species Human,Mouse,Rat

Applications WB=1:500-2000,IHC-P=1:100-500,IHC-F=1:100-500,IF=1:100-500,ICC/IF=1:50-200
not yet tested in other applications.
optimal dilutions/concentrations should be determined by the end user.

Theoretical molecular weight 43kDa

Cellular localization cytoplasmic Mitochondrion

Form Liquid

Concentration 1mg/ml

immunogen KLH conjugated synthetic peptide derived from human PDHA1

Lsotype IgG

Purification affinity purified by Protein A

Buffer Solution 1M TBS(pH7.4) with 1% BSA, 3% Proclin300 and 50% Glycerol.

Storage Shipped at 4°C. Store at -20 °C for one year. Avoid repeated freeze/thaw cycles.

Attention This product as supplied is intended for research use only, not for use in human, therapeutic or diagnostic applications.

PubMed [PubMed](#)

The pyruvate dehydrogenase (PDH) complex is a nuclear-encoded mitochondrial multi-enzyme complex that catalyzes the overall conversion of pyruvate to acetyl-CoA and CO₂, and provides the primary link between glycolysis and the tricarboxylic acid (TCA) cycle. The PDH complex is composed of multiple copies of three enzymatic components: pyruvate dehydrogenase (E1), dihydrolipoamide acetyltransferase (E2) and lipoamide dehydrogenase (E3). The E1 enzyme is a heterotetramer of two alpha and two beta subunits. This gene encodes the E1 alpha 1 subunit containing the E1 active site, and plays a key role in the function of the PDH complex. Mutations in this gene are associated with pyruvate dehydrogenase E1-alpha deficiency and X-linked Leigh syndrome. Alternatively spliced transcript variants encoding different isoforms have been found for this gene.[provided by RefSeq, Mar 2010]

Subcellular Location:

Mitochondrion matrix.

Tissue Specificity:

Testis. Expressed in postmeiotic spermatogenic cells.

**Product
Detail**

SWISS:

P08559

Gene ID:

5160

Database links:

[Entrez Gene: 5160](#) Human

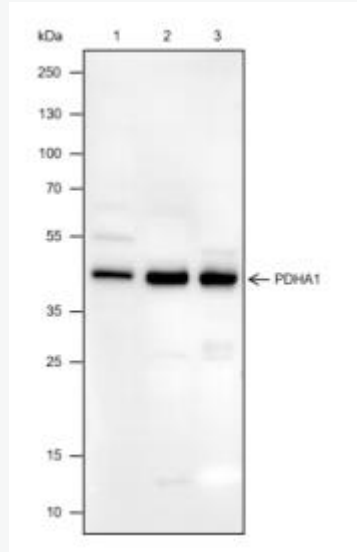
[Entrez Gene: 18597](#) Mouse

[Entrez Gene: 29554](#) Rat

[SwissProt: P08559](#) Human

[SwissProt: P35486](#) Mouse

[SwissProt: P26284](#) Rat



Product Picture

Blocking buffer: 5% NFDM/TBST

Primary Ab dilution: 1:1000

Primary Ab incubation condition: 2 hours at room temperature

Secondary Ab: Goat Anti-Rabbit IgG H&L (HRP)

Lysate: 1: HeLa, 2: Mouse kidney, 3: Rat kidney

Protein loading quantity: 20 μ g

Exposure time: 30 s

Predicted MW: 43 kDa

Observed MW: 43 kDa