

Rabbit Anti-ING1 antibody

SLM-60683R

Product Name	ING1
Chinese Name	生长抑制因子 1Recombinant rabbit monoclonal anti
Alias	Inhibitor of growth protein 1; ING1_HUMAN; p33; p47; p33ING1; p24ING1c; p33ING1b; p47ING1a;
Immunogen Species	Rabbit
Clonality	Monoclonal
Clone NO.	R3H8
React Species	Human,Mouse,Rat WB=1:500-2000
Applications	not yet tested in other applications. optimal dilutions/concentrations should be determined by the end user.
Theoretical molecular weight	47kDa
Cellular localization	The nucleus
Form	Liquid
Concentration	1mg/ml
immunogen	KLH conjugated synthetic peptide derived from human ING1
Lsotype	IgG
Purification	affinity purified by Protein A
Buffer Solution	1M TBS(pH7.4) with 1% BSA, 3% Proclin300 and 50% Glycerol.
Storage	Shipped at 4°C. Store at -20 °C for one year. Avoid repeated freeze/thaw cycles.
Attention	This product as supplied is intended for research use only, not for use in human, therapeutic or diagnostic applications.
PubMed	PubMed
Product Detail	This gene encodes a tumor suppressor protein that can induce cell growth arrest and apoptosis. The encoded protein is a nuclear protein that physically interacts with the tumor suppressor protein TP53 and is a component of the p53 signaling pathway. Reduced expression and rearrangement of this gene have been detected in various cancers. Multiple alternatively spliced transcript variants encoding distinct isoforms

have been reported. [provided by RefSeq, Jul 2008]

Subcellular Location:

Nucleus.

Tissue Specificity:

Isoform 2 was expressed in all normal tissues and cells examined, as well as in all breast cancer and melanoma cell lines examined. Isoform 3 was expressed in testis, liver, and kidney, weakly expressed in colon and brain and not expressed in breast and cultured melanocytes. Isoform 4 was highly expressed in testis and weakly expressed in brain, but not expressed in breast, colon, kidney, melanocytes, breast cancer or melanoma cell lines.

SWISS:

Q9UK53

Gene ID:

3621

Database links:

[Entrez Gene: 3621](#) Human

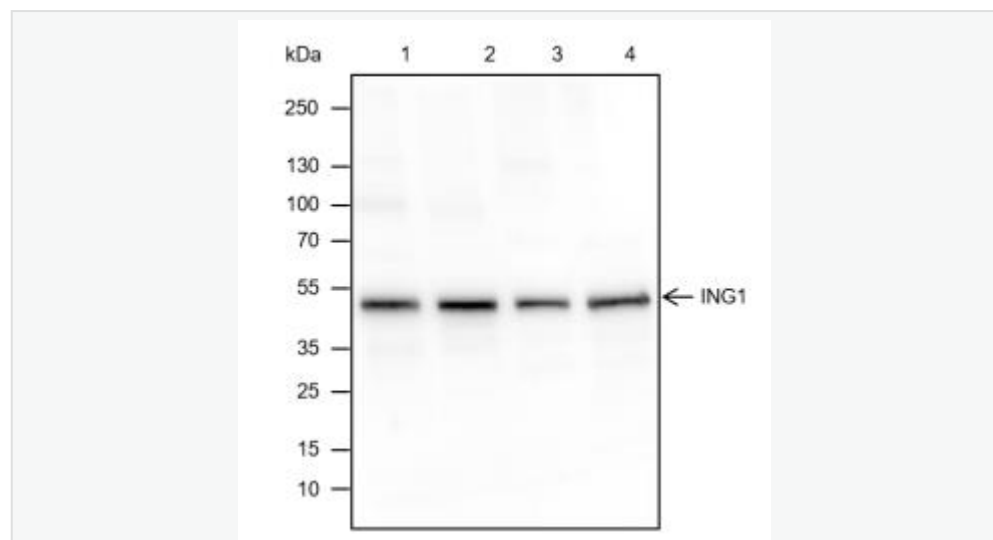
[Entrez Gene: 26356](#) Mouse

[Entrez Gene: 306626](#) Rat

[SwissProt: Q9UK53](#) Human

[SwissProt: Q9QXV3](#) Mouse

Product Picture



Blocking buffer: 5% NFDM/TBST

Primary Ab dilution: 1:1000

Primary Ab incubation condition: 2 hours at
room temperature

Secondary Ab: Goat Anti-Rabbit IgG H&L
(HRP)

Lysate: 1: HT-29, 2: HepG2, 3: PC-12, 4:
NIH/3T3

Protein loading quantity: 20 μ g

Exposure time: 10 s

Predicted MW: 47 kDa

Observed MW: 47kDa