

Rabbit Anti-ORAI3 antibody

SLM-60682R

Product Name	ORAI3
Chinese Name	嗅觉受体 AI3Recombinant rabbit monoclonal anti
Alias	ORAI calcium release activated calcium modulator 3; ORAI3_HUMAN; Protein orai 3; Protein orai-3; TMEM 142C; TMEM142C; Transmembrane protein 142C.
Immunogen Species	Rabbit
Clonality	Monoclonal
Clone NO.	R5C12
React Species	Human
Applications	WB=1:500-2000 not yet tested in other applications. optimal dilutions/concentrations should be determined by the end user.
Theoretical molecular weight	31kDa
Cellular localization	The nucleus
Form	Liquid
Concentration	1mg/ml
immunogen	KLH conjugated synthetic peptide derived from human ORAI3
Lsotype	IgG
Purification	affinity purified by Protein A
Buffer Solution	1M TBS(pH7.4) with 1% BSA, 3% Proclin300 and 50% Glycerol.
Storage	Shipped at 4°C. Store at -20 °C for one year. Avoid repeated freeze/thaw cycles.
Attention	This product as supplied is intended for research use only, not for use in human, therapeutic or diagnostic applications.
PubMed	PubMed
Product Detail	Predicted to enable store-operated calcium channel activity. Predicted to be involved in store-operated calcium entry. Predicted to be located in plasma membrane. Predicted to be integral component of membrane. Predicted to be active in membrane. [provided by Alliance of Genome Resources, Apr 2022]

Subcellular Location:

Membrane.

SWISS:

Q9BRQ5

Gene ID:

93129

Database links:

[Entrez Gene: 93129](#) Human

[Entrez Gene: 269999](#) Mouse

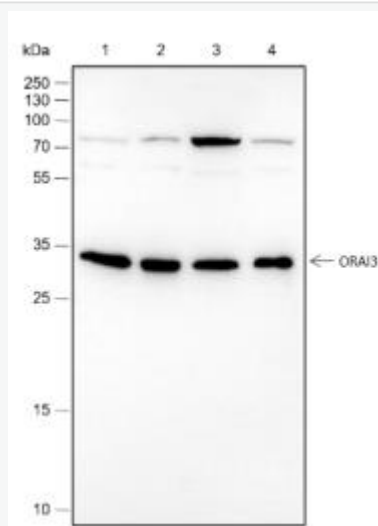
[Entrez Gene: 309000](#) Rat

[SwissProt: Q9BRQ5](#) Human

[SwissProt: Q6P8G8](#) Mouse

[SwissProt: Q6AXR8](#) Rat

Product Picture



Blocking buffer: 5% NFDN/TBST

Primary Ab dilution: 1:1000

Primary Ab incubation condition: 2 hours at

room temperature

Secondary Ab: Goat Anti-Rabbit IgG H&L

(HRP)

Lysate: 1: A431, 2: A549, 3: Raji, 4: NIH/3T3

Protein loading quantity: 20 μ g

Exposure time: 60 s

Predicted MW: 32 kDa

Observed MW: 32 kDa