



SUNLONG

SunLong Biotech Co.,LTD

Tel: 0086-571-56623320 Fax:0086-571-56623318

E-mail:sales@sunlongbiotech.com

www.sunlongbiotech.com

Rabbit Anti-TYMS antibody

SLM-60680R

Product Name TYMS

Chinese Name 胸苷酸合成酶 Recombinant rabbit monoclonal anti

Alias Thymidylate synthase; EC 2.1.1.45; HsT422; MGC88736; TS; TSase; OK/SW-cl.29; TMS; TYSY_HUMAN.

Immunogen Species Rabbit

Clonality Monoclonal

Clone NO. R2F5

React Species Human,Mouse,Rat

Applications WB=1:500-2000,ICC/IF=1:50-200,IHC-P=1:100-500,IHC-F=1:100-500,IF=1:100-500,Flow-Cy not yet tested in other applications.
optimal dilutions/concentrations should be determined by the end user.

Theoretical molecular weight 36kDa

Cellular localization The nucleus cytoplasmic

Form Liquid

Concentration 1mg/ml

immunogen KLH conjugated synthetic peptide derived from human TYMS

Lsotype IgG

Purification affinity purified by Protein A

Buffer Solution 1M TBS(pH7.4) with 1% BSA, 3% Proclin300 and 50% Glycerol.

Storage Shipped at 4°C. Store at -20 °C for one year. Avoid repeated freeze/thaw cycles.

Attention This product as supplied is intended for research use only, not for use in human, therapeutic or diagnostic applications.

PubMed [PubMed](#)

Product Detail Thymidylate synthase catalyzes the methylation of deoxyuridylate to deoxythymidylate using, 10-methylenetetrahydrofolate (methylene-THF) as a cofactor. This function maintains the dTMP (thymidine monophosphate) pool critical for DNA replication and repair. The enzyme has been of interest as a target of chemotherapeutic agents. It is considered to be the primary site of action for 5-fluorouracil,

5-fluoro-2-prime-deoxyuridine, and some folate analogs. Expression of this gene and that of a naturally occurring antisense transcript, mitochondrial enolase superfamily member 1 (GeneID:55556), vary inversely when cells progress from late-log to plateau phase. Polymorphisms in this gene may be associated with etiology of breast cancer, including breast cancer, and response to chemotherapy. [provided by RefSeq, Aug 2017]

Subcellular Location:

Nucleus. Cytoplasm. Mitochondrion. Mitochondrion matrix. Mitochondrion inner membrane.

SWISS:

P04818

Gene ID:

7298

Database links:

[Entrez Gene: 7298](#) Human

[Entrez Gene: 22171](#) Mouse

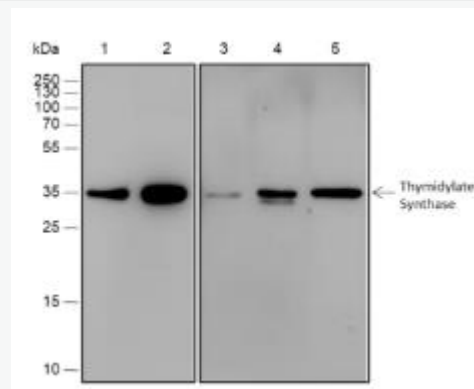
[Entrez Gene: 29261](#) Rat

[SwissProt: P04818](#) Human

[SwissProt: P07607](#) Mouse

[SwissProt: P45352](#) Rat

**Product
Picture**



Blocking buffer: 5% NFDm/TBST

Primary Ab dilution: 1:2000

Primary Ab incubation condition: 2 hours at

room temperature

Secondary Ab: Goat Anti-Rabbit IgG H&L

(HRP)

Lysate: 1: HeLa, 2: Jurkat, 3: HepG2, 4: RAW

264.7, 5: C6

Protein loading quantity:

20 μ g

Exposure time: 60 s

Predicted MW: 36 kDa

Observed MW: 36 kDa