

Rabbit Anti-phospho-BRD2 (Ser37)antibody

SLM-60679R

Product Name	phospho-BRD2 (Ser37)
Chinese Name	磷酸化 BRD2 蛋白 Recombinant rabbit monoclonal anti
Alias	Bromodomain-containing protein 2; KIAA9001; RING3; O27.1.1; Really interesting new gene 3 protein; BRD2_HUMAN;
Product Type	Phosphorylated anti Recombinant rabbit monoclonal anti
Immunogen Species	Rabbit
Clonality	Monoclonal
Clone NO.	R1A12
React Species	Human WB=1:2000-10000
Applications	not yet tested in other applications. optimal dilutions/concentrations should be determined by the end user.
Theoretical molecular weight	88kDa
Form	Liquid
Concentration	1mg/ml
immunogen	KLH conjugated synthetic peptide derived from human phospho-BRD2 (Ser37)
Lsotype	IgG
Purification	affinity purified by Protein A
Buffer Solution	Human1M TBS(pH7.4) with 1% BSA, Human3% Proclin300 and 50% Glycerol.
Storage	Shipped at 4°C. Store at -20 °C for one year. Avoid repeated freeze/thaw cycles.
Attention	This product as supplied is intended for research use only, not for use in human, therapeutic or diagnostic applications.
PubMed	PubMed
Product Detail	This gene encodes a transcriptional regulator that belongs to the BET (bromodomains and extra terminal domain) family of proteins. This protein associates with transcription complexes and with acetylated chromatin during mitosis, and it selectively binds to the acetylated lysine-12 residue of histone H4 via

its two bromodomains. The gene maps to the major histocompatibility complex (MHC) class II region on chromosome 6p21.3, but sequence comparison suggests that the protein is not involved in the immune response. This gene has been implicated in juvenile myoclonic epilepsy, a common form of epilepsy that becomes apparent in adolescence. Multiple alternatively spliced variants have been described for this gene. [provided by RefSeq, Dec 2010]

Subcellular Location:

Nucleus.

SWISS:

P25440

Gene ID:

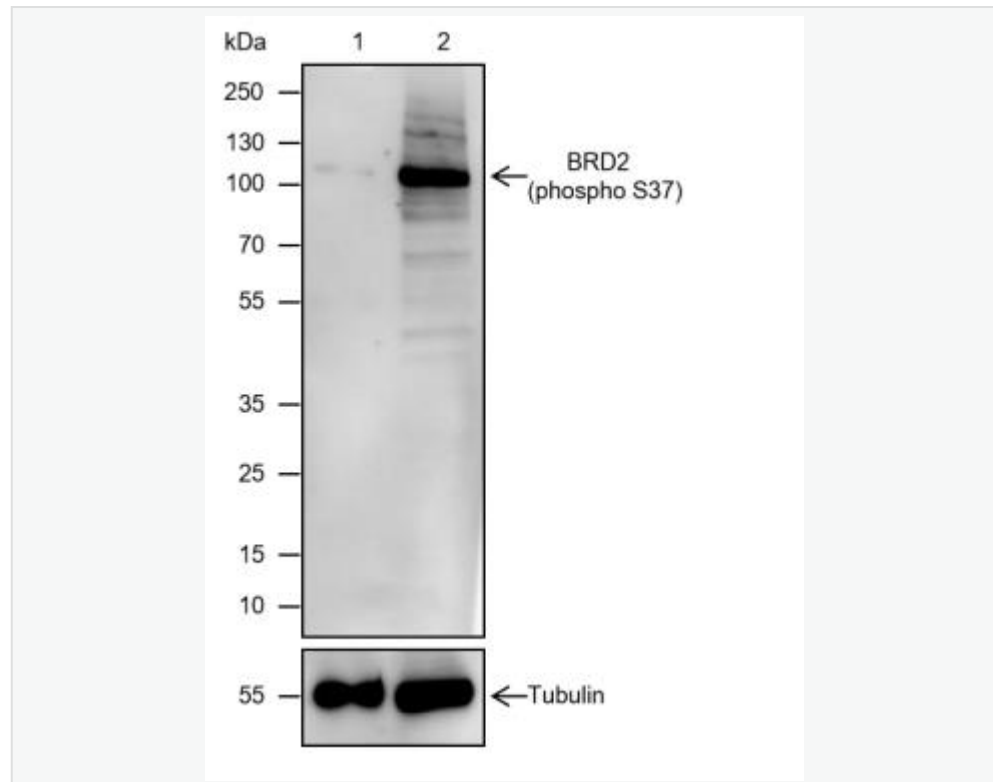
6046

Database links:

[Entrez Gene: 6046](#) Human

[SwissProt: P25440](#) Human

Product Picture



Blocking buffer: 5% NFDM/TBST

Primary Ab dilution: 1:20000

Primary Ab incubation condition: 2 hours at
room temperature

Secondary Ab: Goat Anti-Rabbit IgG H&L
(HRP)

Lysate: 1: HEK-293T, 2: HEK-293T + Calyculin

A (100 nM, 60 min)

Protein loading quantity: 20 μ g

Exposure time: 60 s

Predicted MW: 88 kDa

Observed MW: 110 kDa