

Rabbit Anti-LRP1 antibody

SLM-60676R

Product Name LRP1

Chinese Name 低密度 Lipoprotein 受体相关蛋白 1Recombinant rabbit monoclonal anti

Alias A2MR; Alpha 2 macroglobulin receptor; alpha 2MR; APOER; Apolipoprotein E receptor; APR; CD91; CD91 antigen; Low density lipoprotein receptor related protein 1; Low density lipoprotein protein 1; LRP 1; LRP 515; LRP 85; LRP; LRP ICD; LRP1 protein; LRP515; LRP1_HUMAN.

Immunogen Species Rabbit

Clonality Monoclonal

Clone NO. R1B9

React Species Human,Mouse,Rat

Applications WB=1:500-2000,IHC-P=1:50-200,IHC-F=1:50-200,ICC/IF=1:50-200,IF=1:50-200,Flow-Cyt=1
(Paraffin sections need antigen repair)
not yet tested in other applications.
optimal dilutions/concentrations should be determined by the end user.

Theoretical molecular weight 85/515kDa

Cellular localization The nucleus cytoplasmic The cell membrane

Form Liquid

Concentration 1mg/ml

immunogen KLH conjugated synthetic peptide derived from human LRP1

Lsotype IgG

Purification affinity purified by Protein A

Buffer Solution 1M TBS(pH7.4) with 1% BSA, 3% Proclin300 and 50% Glycerol.

Storage Shipped at 4°C. Store at -20 °C for one year. Avoid repeated freeze/thaw cycles.

Attention This product as supplied is intended for research use only, not for use in human, therapeutic or diagnostic applications.

PubMed [PubMed](#)

Product This gene encodes a member of the low-density lipoprotein receptor family of proteins. The encoded

Detail

preproprotein is proteolytically processed by furin to generate 515 kDa and 85 kDa subunits that form the receptor (PMID: 8546712). This receptor is involved in several cellular processes, including intracellular lipid homeostasis, and clearance of apoptotic cells. In addition, the encoded protein is necessary for the 2-macroglobulin-mediated clearance of secreted amyloid precursor protein and beta-amyloid, the main component of amyloid plaques found in Alzheimer patients. Expression of this gene decreases with age and has been found to be lower than controls in brain tissue from Alzheimer's disease patients. [provided by RefSeq 2015]

Subcellular Location:

Cell membrane. Membrane, coated pit and Cytoplasm. Nucleus. After cleavage, the intracellular (LRPICD) is detected both in the cytoplasm and in the nucleus.

Tissue Specificity:

Most abundant in liver, brain and lung.

SWISS:

Q07954

Gene ID:

4035

Database links:

[Entrez Gene: 4035](#) Human

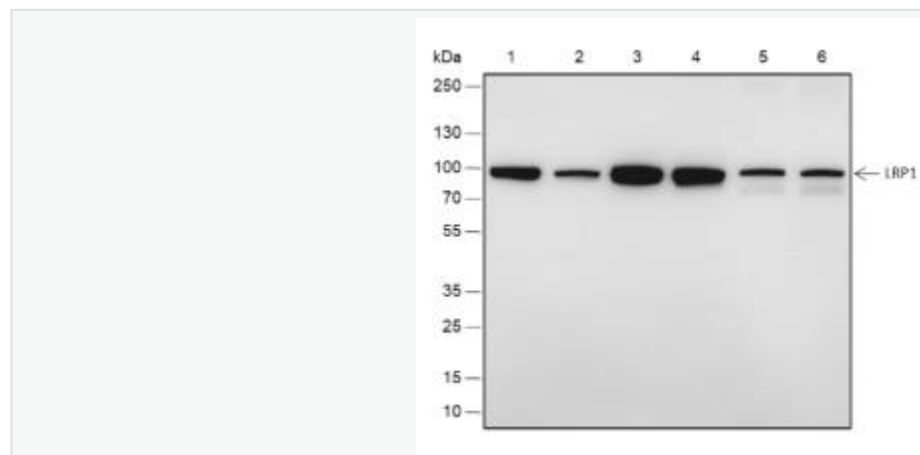
[Entrez Gene: 16971](#) Mouse

[Entrez Gene: 299858](#) Rat

[SwissProt: Q07954](#) Human

[SwissProt: Q91ZX7](#) Mouse

Product Picture



Blocking buffer: 5% NFDM/TBST

Primary Ab dilution: 1:5000

Primary Ab incubation condition: 2 hours at
room temperature

Secondary Ab: Goat Anti-Rabbit IgG H&L
(HRP)

Lysate: 1: MCF7, 2: A549, 3: Jurkat, 4: U87-
MG, 5: Mouse brain, 6: Rat brain

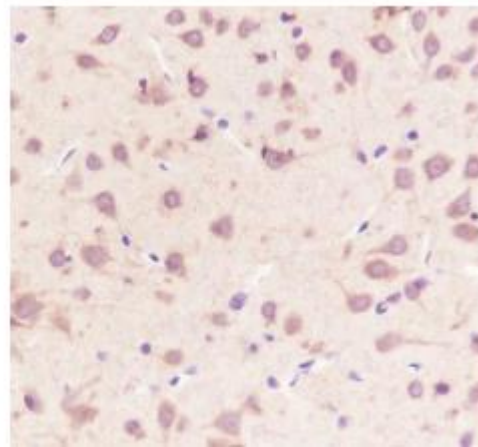
Protein loading quantity:

20 μ g

Exposure time: 60 s

Predicted MW: 85 kDa

Observed MW: 85 kDa



Tissue: Rat brain

Section type: Formalin-fixed & Paraffin

embedded section

Retrieval method: High temperature and high
pressure

Retrieval buffer: Tris/EDTA buffer, pH 9.0

Primary Ab dilution: 1:1000

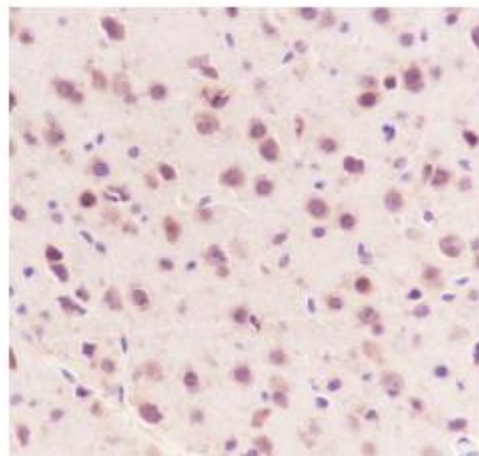
Primary Ab incubation condition: 1 hour at
room temperature

Secondary Ab: Anti-Rabbit and Mouse

Polymer HRP (Ready to use)

Counter stain: Hematoxylin (Blue)

Comment: Color brown is the positive signal
for SLM-60676R



Tissue: Mouse brain

Section type: Formalin-fixed & Paraffin

embedded section

Retrieval method: High temperature and high
pressure

Retrieval buffer: Tris/EDTA buffer, pH 9.0

Primary Ab dilution: 1:100

Primary Ab incubation condition: 1 hour at
room temperature

Secondary Ab: Anti-Rabbit and Mouse

Polymer HRP (Ready to use)

Counter stain: Hematoxylin (Blue)

Comment: Color brown is the positive signal
for

SLM-60676R



Tissue: Human placenta

Section type: Formalin-fixed & Paraffin

embedded section

Retrieval method: High temperature and high

pressure

Retrieval buffer: Tris/EDTA buffer, pH 9.0

Primary Ab dilution: 1:1000

Primary Ab incubation condition: 1 hour at

room temperature

Secondary Ab: Anti-Rabbit and Mouse

Polymer HRP (Ready to use)

Counter stain: Hematoxylin (Blue)

Comment: Color brown is the positive signal

for SLM-60676R