

Rabbit Anti-CD32 antibody

SLM-60674R

Product Name	CD32
Chinese Name	CD32BRecombinant rabbit monoclonal anti CD32 antigen; CDw32; CD32B; Fc fragment of IgG, low affinity II, receptor for (CD32); Fc fragment of IgG, low affinity IIb, receptor; Fc fragment of IgG, low affinity IIb, receptor (CD32); Fc fragment of IgG, low affinity IIb, receptor for (CD32); Fc fragment of IgG, low affinity IIb, receptor for; Fc gamma receptor IIB; Fc gamma RII; Fc gamma RIIB; Fc-gamma RII; Fc-gamma RII-b; Fc-gamma-RIIb; FCG2; FCG2B_HUMAN; FCGR2B; FCRII; FcRII-b; IgG Fc receptor II beta; IgG Fc receptor II-b; Low affinity immunoglobulin gamma Fc region receptor II; Low affinity immunoglobulin gamma Fc region receptor II-b; Ly-17; Lymphocyte antigen 17. 低亲和力免疫球蛋白 γ Fc 区受体 II-B;
Alias	
Research Area	Tumour Signal transduction Apoptosis transcriptional regulatory factor
Immunogen Species	Rabbit
Clonality	Monoclonal
Clone NO.	R8F6
React Species	Human(predicted:Mouse,Rat) WB=1:500-1000,IHC-P=1:100-500,IHC-F=1:200-400,IF=1:100-500 (Paraffin sections need antigen repair)
Applications	not yet tested in other applications. optimal dilutions/concentrations should be determined by the end user.
Theoretical molecular weight	31kDa
Cellular localization	The cell membrane
Form	Liquid
Concentration	1mg/ml
immunogen	KLH conjugated synthetic peptide derived from human CD32
Lsotype	IgG
Purification	affinity purified by Protein A
Buffer Solution	1M TBS(pH7.4) with 1% BSA, 3% Proclin300 and 50% Glycerol.



Storage

Shipped at 4°C. Store at -20 °C for one year. Avoid repeated freeze/thaw cycles.

Attention

This product as supplied is intended for research use only, not for use in human, therapeutic or diagnostic applications.

PubMed

[PubMed](#)

The protein encoded by this gene is a low affinity receptor for the Fc region of immunoglobulin gamma complexes. The encoded protein is involved in the phagocytosis of immune complexes and in the regulation of antibody production by B-cells. Variations in this gene may increase susceptibility to systemic lupus erythematosus (SLE). Several transcript variants encoding different isoforms have been found for this gene. [provided by RefSeq, Jun 2010]

Subcellular Location:

Cell membrane; Single-pass type I membrane protein.

Product Detail

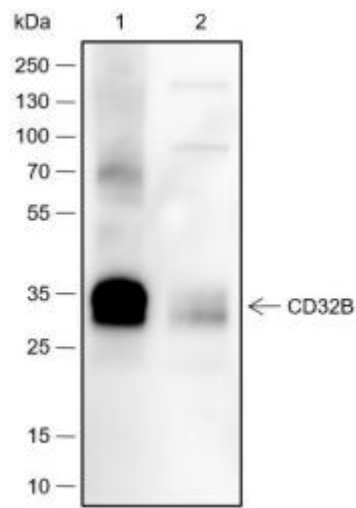
SWISS:
P31994

Gene ID:
2213

Database links:

[Entrez Gene: 2213](#) Human

[SwissProt: P31994](#) Human



Product Picture

Blocking buffer: 5% NFDN/TBST

Primary Ab dilution: 1:1000

Primary Ab incubation condition: 2 hours at room temperature

Secondary Ab: Goat Anti-Rabbit IgG H&L (HRP)

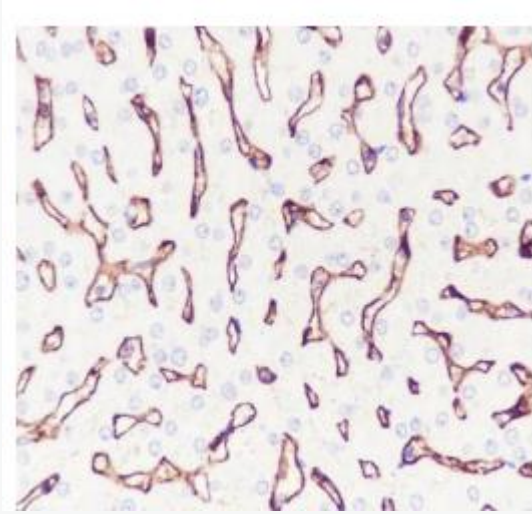
Lysate: 1: Human placenta, 2: Human liver

Protein loading quantity: 20 μ g

Exposure time: 60 s

Predicted MW: 34 kDa

Observed MW: 34 kDa



Tissue: Human liver

Section type: Formalin-fixed &

Paraffin-embedded section

Retrieval method: High temperature and high
pressure

Retrieval buffer: Tris/EDTA buffer, pH 9.0

Primary Ab dilution: 1:1000

Primary Ab incubation condition: 1 hour at
room temperature

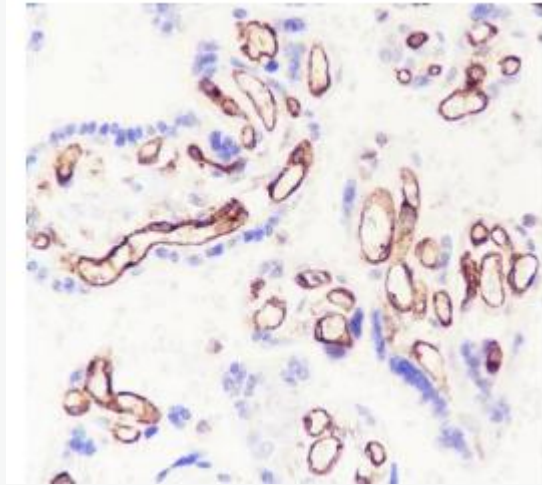
Secondary Ab: Anti-Rabbit and Mouse

Polymer HRP (Ready to use)

Counter stain: Hematoxylin (Blue)

Comment: Color brown is the positive signal for

SLM-60674R



Tissue: Human placenta

Section type: Formalin-fixed &

Paraffin-embedded section

Retrieval method: High temperature and high
pressure

Retrieval buffer: Tris/EDTA buffer, pH 9.0

Primary Ab dilution: 1:1000

Primary Ab incubation condition: 1 hour at
room temperature

Secondary Ab: Anti-Rabbit and Mouse

Polymer HRP (Ready to use)

Counter stain: Hematoxylin (Blue)



SunLong Biotech Co.,LTD
Tel: 0086-571-56623320 Fax:0086-571-56623318
E-mail:sales@sunlongbiotech.com
www.sunlongbiotech.com

Comment: Color brown is the positive signal for