

Rabbit Anti-SIRT6 antibody

SLM-60669R

Product Name	SIRT6
Chinese Name	沉默调节相关蛋白 6Recombinant rabbit monoclonal anti
Alias	NAD-dependent protein deacylase sirtuin-6; SIR2L6; EC:2.3.1.-; NAD-dependent protein deacetylase sirtuin-6; Protein mono-ADP-ribosyltransferase sirtuin-6; Regulatory protein SIR2 homolog 6; SIR2-like protein 6;
Immunogen Species	Rabbit
Clonality	Monoclonal
Clone NO.	R4G8
React Species	Human,Mouse,Rat WB=1:500-2000
Applications	not yet tested in other applications. optimal dilutions/concentrations should be determined by the end user.
Theoretical molecular weight	39kDa
Form	Liquid
Concentration	1mg/ml
immunogen	KLH conjugated synthetic peptide derived from human SIRT6
Lsotype	IgG
Purification	affinity purified by Protein A
Buffer Solution	1M TBS(pH7.4) with 1% BSA, 3% Proclin300 and 50% Glycerol.
Storage	Shipped at 4°C. Store at -20 °C for one year. Avoid repeated freeze/thaw cycles.
Attention	This product as supplied is intended for research use only, not for use in human, therapeutic or diagnostic applications.
PubMed	PubMed
Product Detail	This gene encodes a member of the sirtuin family of NAD-dependent enzymes that are implicated in cellular stress resistance, genomic stability, aging and energy homeostasis. The encoded protein is localized to the nucleus, exhibits ADP-ribosyl transferase and histone deacetylase activities, and plays a role in DNA repair, maintenance of telomeric chromatin, inflammation, lipid and glucose metabolism.

Alternative splicing results in multiple transcript variants encoding different isoforms.
[provided by RefSeq, Mar 2016]

Subcellular Location:

Nucleus, nucleoplasm.

SWISS:

Q8N6T7

Gene ID:

51548

Database links:

[Entrez Gene: 51548](#) Human

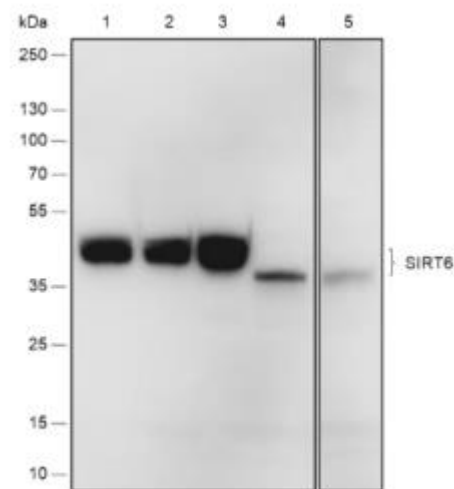
[Entrez Gene: 50721](#) Mouse

[Entrez Gene: 299638](#) Rat

[SwissProt: Q8N6T7](#) Human

[SwissProt: P59941](#) Mouse

Product Picture



Blocking buffer: 5% NFDN/TBST

Primary Ab dilution: 1:1000

Primary Ab incubation condition: 2 hours at
room temperature

Secondary Ab: Goat Anti-Rabbit IgG H&L
(HRP)

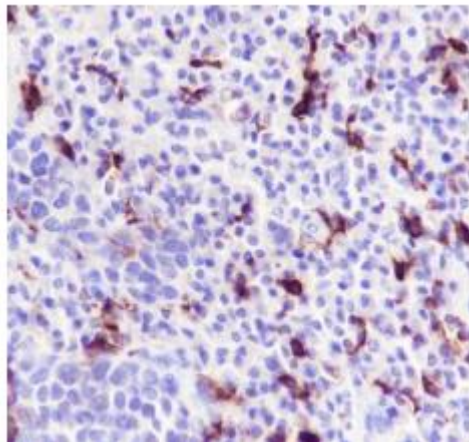
Lysate: 1: HCT-116, 2: HeLa, 3: Jurkat, 4:
C2C12, 5: PC-12

Protein loading quantity: 20 μ g

Exposure time: 60 s

Predicted MW: 39 kDa

Observed MW: 42 kDa



Tissue: Human esophagus

Section type: Formalin-fixed & Paraffin
embedded section

Retrieval method: High temperature and high

pressure

Retrieval buffer: Tris/EDTA buffer, pH 9.0

Primary Ab dilution: 1:1000

Primary Ab incubation condition: 1 hour at
room temperature

Secondary Ab: Anti-Rabbit and Mouse

Polymer HRP (Ready to use)

Counter stain: Hematoxylin (Blue)

Comment: Color brown is the positive signal
for SLM-52556R