

Rabbit Anti-CSNK1G2 antibody

SLM-60668R

Product Name	CSNK1G2
Chinese Name	酪蛋白激酶 1 γ 2Recombinant rabbit monoclonal anti
Alias	Casein kinase I isoform gamma-2; EC:2.7.11.1; CKI-gamma 2; CK1G2; KC1G2_HUMAN;
Immunogen Species	Rabbit
Clonality	Monoclonal
Clone NO.	R8G7
React Species	Human(predicted:Mouse,Rat) WB=1:500-2000,ICC/IF=1:50-100,Flow-Cyt=1:50-100
Applications	not yet tested in other applications. optimal dilutions/concentrations should be determined by the end user.
Theoretical molecular weight	47kDa
Form	Liquid
Concentration	1mg/ml
immunogen	KLH conjugated synthetic peptide derived from human CSNK1G2
Lsotype	IgG
Purification	affinity purified by Protein A
Buffer Solution	1M TBS(pH7.4) with 1% BSA, 3% Proclin300 and 50% Glycerol.
Storage	Shipped at 4°C. Store at -20 °C for one year. Avoid repeated freeze/thaw cycles.
Attention	This product as supplied is intended for research use only, not for use in human, therapeutic or diagnostic applications.
PubMed	PubMed Enables protein serine/threonine kinase activity. Involved in peptidyl-serine phosphorylation. Located in membrane. [provided by Alliance of Genome Resources, Apr 2022]
Product Detail	Subcellular Location: Cytoplasm.

Tissue Specificity:
Testis.

SWISS:
P78368

Gene ID:
1455

Database links:

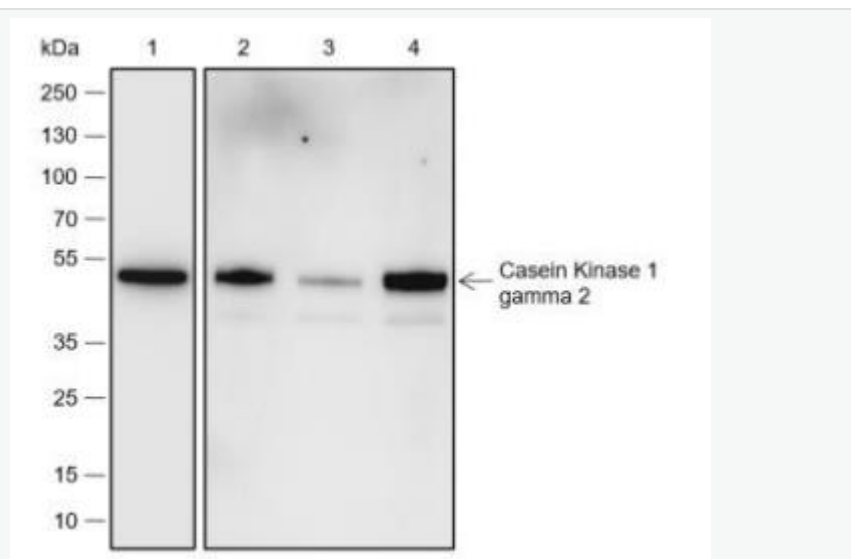
[Entrez Gene: 1455](#) Human

[Entrez Gene: 103236](#) Mouse

[SwissProt: P78368](#) Human

[SwissProt: Q8BVP5](#) Mouse

Product Picture



Blocking buffer: 5% NFDN/TBST

Primary Ab dilution: 1:5000

Primary Ab incubation condition: 2 hours at

room temperature

Secondary Ab: Goat Anti-Rabbit IgG H&L

(HRP)

Lysate: 1: HeLa, 2: 4T1, 3: RAW 264.7, 4: Rat

brain

Protein loading quantity:

20 μ g

Exposure time: 60 s

Predicted MW: 50 kDa

Observed MW: 50 kDa