

Rabbit Anti-PAX5 antibody

SLM-60667R

Product Name PAX5

Chinese Name 配对盒基因 5Recombinant rabbit monoclonal anti

Alias

B cell lineage specific activator; B cell lineage specific activator protein; B cell specific activator protein; B cell specific transcription factor; B-cell-specific transcription factor; BSAP; EBB-1; KLP; Paired box 5; Paired box gene 5 (B cell lineage specific activator protein); Paired box gene 5 (B cell lineage specific activator); Paired box gene 5; Paired box homeotic gene 5; Paired box protein Pax 5; Paired box protein Pax-5; Paired domain gene 5; PAX 5; PAX5_HUMAN; Transcription factor PAX 5.

Immunogen Species

Rabbit

Clonality

Monoclonal

Clone NO.

R6F9

React Species

Human,Mouse,Rat

Applications

IHC-P=1:100-500,IHC-F=1:100-500,IF=1:100-500,Flow-Cyt=1:50-100,ICC/IF=1:50-200
(Paraffin sections need antigen repair)
not yet tested in other applications.
optimal dilutions/concentrations should be determined by the end user.

Theoretical molecular weight

42kDa

Form

Liquid

Concentration

1mg/ml

immunogen

KLH conjugated synthetic peptide derived from human PAX5

Lsotype

IgG

Purification

affinity purified by Protein A

Buffer Solution

1M TBS(pH7.4) with 1% BSA, 3% Proclin300 and 50% Glycerol.

Storage

Shipped at 4°C. Store at -20 °C for one year. Avoid repeated freeze/thaw cycles.

Attention

This product as supplied is intended for research use only, not for use in human, therapeutic or diagnostic applications.

PubMed

[PubMed](#)



This gene encodes a member of the paired box (PAX) family of transcription factors. The central feature of this gene family is a novel, highly conserved DNA-binding motif, known as the paired box. Paired box transcription factors are important regulators in early development, and alterations in the expression of their genes are thought to contribute to neoplastic transformation. This gene encodes the B-cell lineage specific activator protein that is expressed at early, but not late stages of B-cell differentiation. Its expression has also been detected in developing CNS and testis and so the encoded protein may also play a role in neural development and spermatogenesis. This gene is located at 9p13, which is involved in t(9;14)(p13;q32) translocations recurring in small lymphocytic lymphomas of the plasmacytoid subtype, and in derived large-cell lymphomas. This translocation brings the potent E-mu enhancer of the IgH gene into close proximity of the PAX5 promoter, suggesting that the deregulation of transcription of this gene contributes to the pathogenesis of these lymphomas. Alternative splicing results in multiple transcript variants encoding different isoforms. [provided by RefSeq, Jul 2013]

Subcellular Location:

Nucleus.

Tissue Specificity:

Expressed at early B-cell differentiation, in the developing CNS and in adult testis.

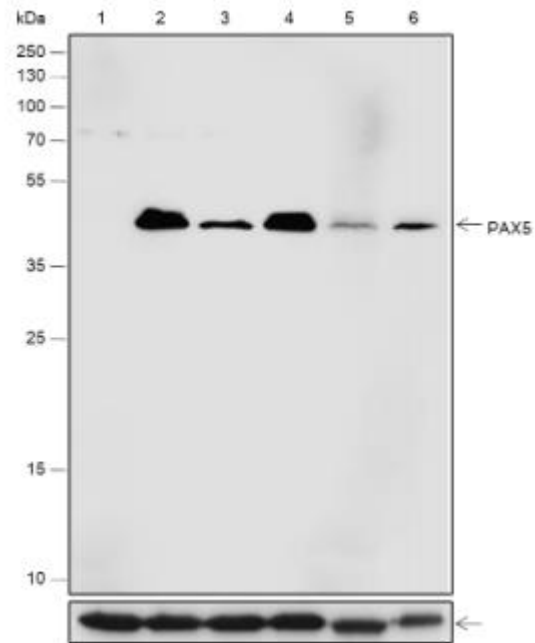
**Product
Detail****SWISS:**

Q02548

Gene ID:

5079

Database links:[Entrez Gene: 5079](#) Human[Entrez Gene: 18507](#) Mouse[Omim: 167414](#) Human[SwissProt: Q02548](#) Human[SwissProt: Q02650](#) Mouse



Product Picture

Blocking buffer: 5% NFDN/TBST

Primary Ab dilution: 1:1000

Primary Ab incubation condition: 2 hours at room temperature

Secondary Ab: Goat Anti-Rabbit IgG H&L (HRP)

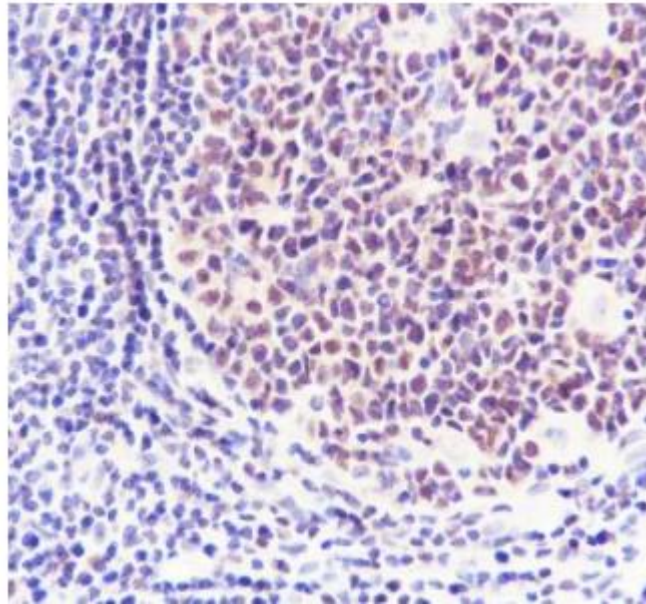
Lysate: 1. Jurkat (Negative control), 2: Ramos, 3: Raji, 4: Daudi, 5: Mouse spleen, 6: Rat spleen

Protein loading quantity: 20 μ g

Exposure time: 60 s

Predicted MW: 42 kDa

Observed MW: 45 kDa



Tissue: Human appendix

Section type: Formalin-fixed & Paraffin
embedded section

Retrieval method: High temperature and high
pressure

Retrieval buffer: Tris/EDTA buffer, pH 9.0

Primary Ab dilution: 1:100

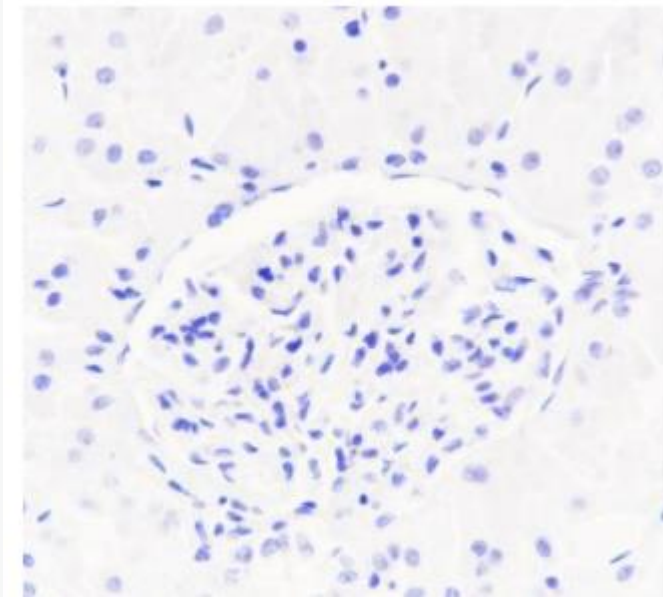
Primary Ab incubation condition: 1 hour at
room temperature

Secondary Ab: Anti-Rabbit and Mouse

Polymer HRP (Ready to use)

Counter stain: Hematoxylin (Blue)

Comment: Color brown is the positive signal
for SLM-60667R



Tissue: Human kidney (Negative tissue)

Section type: Formalin-fixed & Paraffin
embedded section

Retrieval method: High temperature and high
pressure

Retrieval buffer: Tris/EDTA buffer, pH 9.0

Primary Ab dilution: 1:100

Primary Ab incubation condition: 1 hour at



room temperature

Secondary Ab: Anti-Rabbit and Mouse

Polymer HRP (Ready to use)

Counter stain: Hematoxylin (Blue)

Comment: No staining on nucleus.