

## Rabbit Anti-ATF1 antibody

SLM-60665R

<b>Product Name</b>	ATF1
<b>Chinese Name</b>	活化转录因子 1Recombinant rabbit monoclonal anti Activating Transcription Factor1; TREB36 protein; ATF 1; ATF1 EWS fusion gene ATF1 FUS fusion gene; cAMP dependent transcription factor 1; Cyclic AMP dependent transcription factor ATF 1; Cyclic AMP dependent transcription factor ATF1; EWS AFT1; FUS ATF 1; RNA binding protein activating transcription factor 1 fusion protein; TREB 36; TREB36; ATF1_HUMAN; TCR-ATF1.
<b>Alias</b>	
<b>Research Area</b>	Chromatin and nuclear signals transcriptional regulatory factor
<b>Immunogen Species</b>	Rabbit
<b>Clonality</b>	Monoclonal
<b>Clone NO.</b>	R10B4
<b>React Species</b>	Human,Rat,Mouse WB=1:1000-5000,IHC-P=1:100-1000,IHC-F=1:100-1000,IF=1:100-1000 (Paraffin sections need antigen repair) not yet tested in other applications. optimal dilutions/concentrations should be determined by the end user.
<b>Applications</b>	
<b>Theoretical molecular weight</b>	29kDa
<b>Cellular localization</b>	The nucleus
<b>Form</b>	Liquid
<b>Concentration</b>	1mg/ml
<b>immunogen</b>	KLH conjugated synthetic peptide derived from human ATF1
<b>Lsotype</b>	IgG
<b>Purification</b>	affinity purified by Protein A
<b>Buffer Solution</b>	1M TBS(pH7.4) with 1% BSA, 3% Proclin300 and 50% Glycerol.
<b>Storage</b>	Shipped at 4°C. Store at -20 °C for one year. Avoid repeated freeze/thaw cycles.
<b>Attention</b>	This product as supplied is intended for research use only, not for use in

human, therapeutic or diagnostic applications.

## PubMed

### [PubMed](#)

This gene encodes an activating transcription factor, which belongs to the ATF subfamily and bZIP (basic-region leucine zipper) family. It influences cellular physiologic processes by regulating the expression of downstream target genes, which are related to growth, survival, and other cellular activities. This protein is phosphorylated at serine 63 in its kinase-inducible domain by serine/threonine kinases, cAMP-dependent protein kinase A, calmodulin-dependent protein kinase I/II, mitogen- and stress-activated protein kinase and cyclin-dependent kinase 3 (cdk-3). Its phosphorylation enhances its transactivation and transcriptional activities, and enhances cell transformation. Fusion of this gene and FUS on chromosome 16 or EWSR1 on chromosome 22 induced by translocation generates chimeric proteins in angiomatoid fibrous histiocytoma and clear cell sarcoma. This gene has a pseudogene on chromosome 6. [provided by RefSeq, Aug 2010]

### **Subcellular Location:**

Nucleus.

## Product Detail

### **SWISS:**

P18846

### **Gene ID:**

466

### **Database links:**

[Entrez Gene: 466](#) Human

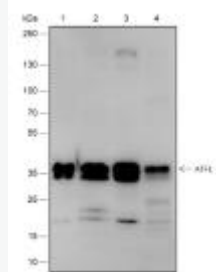
[Entrez Gene: 11908](#) Mouse

[Entrez Gene: 315305](#) Rat

[SwissProt: P18846](#) Human

[SwissProt: P81269](#) Mouse

## Product Picture



Blocking buffer: 5% NFDN/TBST

Primary Ab dilution: 1:1000

Primary Ab incubation condition: 2 hours at  
room temperature

Secondary Ab: Goat Anti-Rabbit IgG H&L  
(HRP)

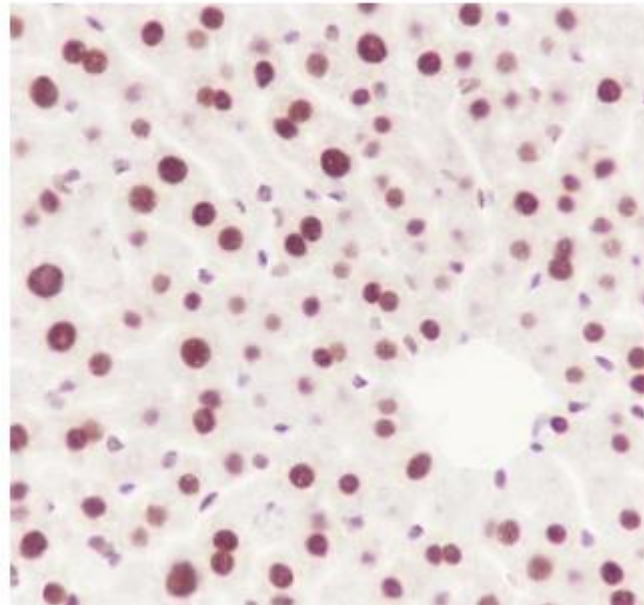
Lysate: 1: HeLa, 2: HCT-116, 3: K562, 4:  
HepG2

Protein loading quantity: 20  $\mu$ g

Exposure time: 60 s

Predicted MW: 29 kDa

Observed MW: 35 kDa



Tissue: Mouse liver

Section type: Formalin-fixed & Paraffin

embedded section

Retrieval method: High temperature and high  
pressure

Retrieval buffer: Tris/EDTA buffer, pH 9.0

Primary Ab dilution: 1:100

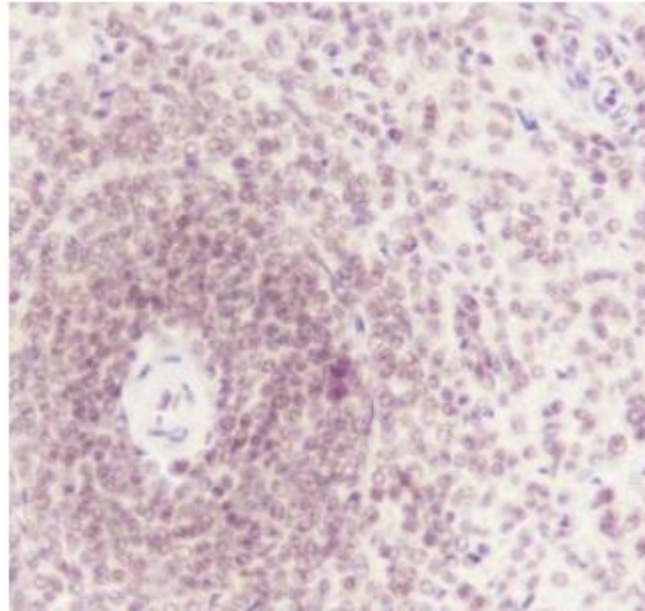
Primary Ab incubation condition: 1 hour at  
room temperature

Secondary Ab: Anti-Rabbit and Mouse

Polymer HRP (Ready to use)

Counter stain: Hematoxylin (Blue)

Comment: Color brown is the positive signal  
for SLM-60665R



Tissue: Human spleen

Section type: Formalin-fixed & Paraffin

embedded section

Retrieval method: High temperature and high  
pressure

Retrieval buffer: Tris/EDTA buffer, pH 9.0

Primary Ab dilution: 1:1000

Primary Ab incubation condition: 1 hour at  
room temperature

Secondary Ab: Anti-Rabbit and Mouse

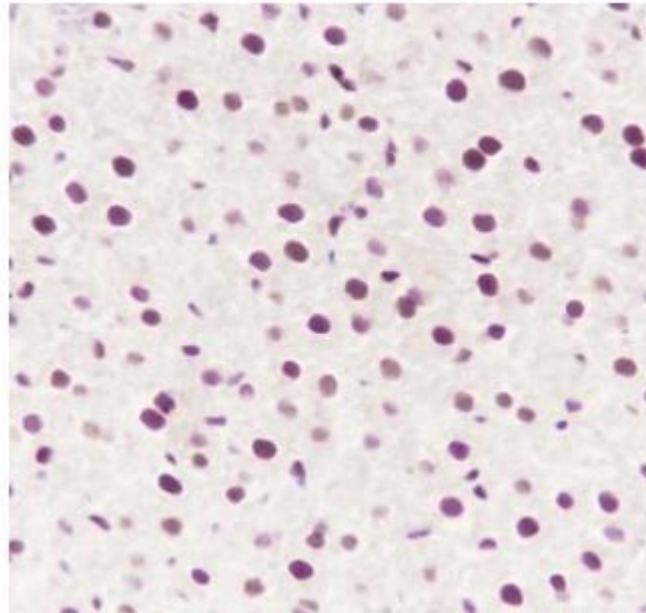
Polymer HRP (Ready to use)

Counter stain: Hematoxylin (Blue)

Comment: Color brown is the positive signal

for

SLM-60665R



Tissue: Rat liver

Section type: Formalin-fixed & Paraffin  
embedded section

Retrieval method: High temperature and high  
pressure

Retrieval buffer: Tris/EDTA buffer, pH 9.0

Primary Ab dilution: 1:100

Primary Ab incubation condition: 1 hour at  
room temperature



Secondary Ab: Anti-Rabbit and Mouse

Polymer HRP (Ready to use)

Counter stain: Hematoxylin (Blue)

Comment: Color brown is the positive signal for

SLM-60665R