

Rabbit Anti-MEK3 antibody

SLM-60662R

Product Name	MEK3
Chinese Name	丝裂原活化蛋白激酶 MKK3Recombinant rabbit monoclonal anti MAP Kinase Kinase 3; Dual specificity mitogen activated protein kinase kinase 3; ERK kinase 3; MAP kinase kinase 3; MAP2K 3; MAP2K3; MAPK ERK kinase 3; MAPK kinase 3; MAPKK 3; MAPKK3; MEK 3; Mitogen activated protein kinase kinase 3; MKK 3; MKK3; mMKK 3b; mMKK3b; MPK 3; PRKMK 3; PRKMK3; Protein kinase mitogen activated kinase 3; SKK2; zMKK 3; MP2K3_HUMAN.
Alias	
Research Area	Signal transduction
Immunogen Species	Rabbit
Clonality	Monoclonal
Clone NO.	R3D6
React Species	Human(predicted:Mouse,Rat) WB=1:500-1000
Applications	not yet tested in other applications. optimal dilutions/concentrations should be determined by the end user.
Theoretical molecular weight	39kDa
Cellular localization	cytoplasmic Extracellular matrix
Form	Liquid
Concentration	1mg/ml
immunogen	KLH conjugated synthetic peptide derived from human MEK3
Lsotype	IgG
Purification	affinity purified by Protein A
Buffer Solution	1M TBS(pH7.4) with 1% BSA, 3% Proclin300 and 50% Glycerol.
Storage	Shipped at 4°C. Store at -20 °C for one year. Avoid repeated freeze/thaw cycles.
Attention	This product as supplied is intended for research use only, not for use in human, therapeutic or diagnostic applications.

PubMed

[PubMed](#)

The protein encoded by this gene is a dual specificity protein kinase that belongs to the MAP kinase kinase family. This kinase is activated by mitogenic and environmental stress, and participates in the MAP kinase-mediated signaling cascade. It phosphorylates and thus activates MAPK14/p38-MAPK. This kinase can be activated by insulin, and is necessary for the expression of glucose transporter. Expression of RAS oncogene is found to result in the accumulation of the active form of this kinase, which thus leads to the constitutive activation of MAPK14, and confers oncogenic transformation of primary cells. The inhibition of this kinase is involved in the pathogenesis of Yersinia pseudotuberculosis. Multiple alternatively spliced transcript variants that encode distinct isoforms have been reported for this gene. [provided by RefSeq]

Subcellular Location:

Cytoplasm; cytoskeleton.

Tissue Specificity:

Abundant expression is seen in the skeletal muscle. It is also widely expressed in other tissues.

Product Detail

SWISS:

P46734

Gene ID:

5606

Database links:

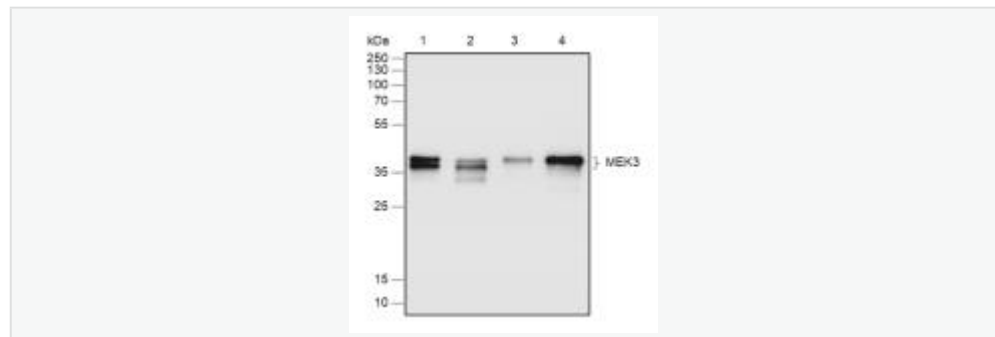
[Entrez Gene: 5606](#) Human

[Entrez Gene: 26397](#) Mouse

[SwissProt: P46734](#) Human

[SwissProt: O09110](#) Mouse

Product Picture



Blocking buffer: 5% NFDM/TBST

Primary Ab dilution: 1:1000

Primary Ab incubation condition: 2 hours at
room temperature

Secondary Ab: Goat Anti-Rabbit IgG H&L
(HRP)

Lysate: 1: HeLa, 2: HepG2, 3: C6, 4: NIH/3T3

Protein loading quantity: 20 μ g

Exposure time: 30 s

Predicted MW: 39 kDa

Observed MW: 36, 39 kDa