

Rabbit Anti-CD1c antibody

SLM-60660R

Product Name	CD1c
Chinese Name	T 细胞表面 glycoproteinCD1CRecombinant rabbit monoclonal anti CD1c antigen; CD1C antigen c polypeptide; CD1c molecule;
Alias	CD1C_HUMAN; Cortical thymocyte antigen CD1C; Differentiation antigen CD1 alpha 3 antibody R7; T cell surface glycoprotein CD1c; T-cell surface glycoprotein CD1c.
Research Area	Signal transduction
Immunogen Species	Rabbit
Clonality	Monoclonal
Clone NO.	R6C8
React Species	Human
Applications	WB=1:500-1000,IHC-P=1:50-200,IHC-F=1:50-200,IF=1:50-200 (Paraffin sections need antigen repair) not yet tested in other applications. optimal dilutions/concentrations should be determined by the end user.
Theoretical molecular weight	36kDa
Cellular localization	The cell membrane
Form	Liquid
Concentration	1mg/ml
immunogen	KLH conjugated synthetic peptide derived from human CD1c
Lsotype	IgG
Purification	affinity purified by Protein A
Buffer Solution	1M TBS(pH7.4) with 1% BSA, 3% Proclin300 and 50% Glycerol.
Storage	Shipped at 4°C. Store at -20 °C for one year. Avoid repeated freeze/thaw cycles.
Attention	This product as supplied is intended for research use only, not for use in human, therapeutic or diagnostic applications.
PubMed	PubMed

This gene encodes a member of the CD1 family of transmembrane glycoproteins, which are structurally related to the major histocompatibility complex (MHC) proteins and form heterodimers with beta-2-microglobulin. The CD1 proteins mediate the presentation of primarily lipid and glycolipid antigens of self or microbial origin to T cells. The human genome contains five CD1 family genes organized in a cluster on chromosome 1. The CD1 family members are thought to differ in their cellular localization and specificity for particular lipid ligands. The protein encoded by this gene is broadly distributed throughout the endocytic system via a tyrosine-based motif in the cytoplasmic tail. Alternatively spliced transcript variants of this gene have been observed, but their full-length nature is not known. [provided by RefSeq, Jul 2008]

Subcellular Location:

Nucleus.

Product Detail

SWISS:
P29017

Gene ID:
911

Database links:

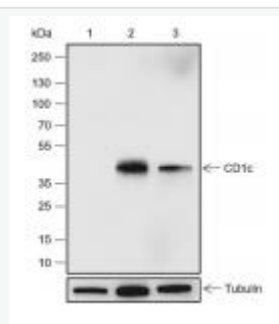
[Entrez Gene: 911](#) Human

[Omim: 188340](#) Human

[SwissProt: P29017](#) Human

[Unigene: 132448](#) Human

Product Picture



Blocking buffer: 5% NFDN/TBST

Primary Ab dilution: 1:2000

Primary Ab incubation condition: 2 hours at
room temperature

Secondary Ab: Goat Anti-Rabbit IgG H&L
(HRP)

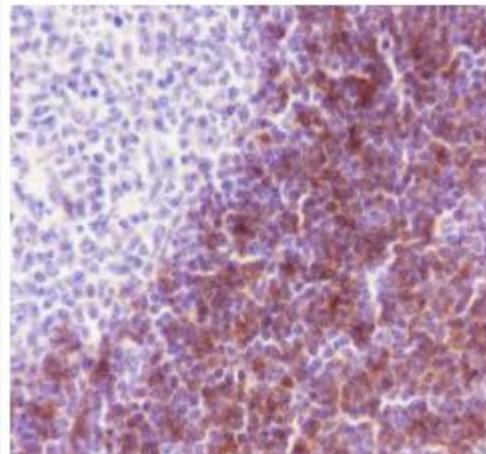
Lysate: 1: THP-1 (Negative control), 2:
MOLT-4, 3: Jurkat

Protein loading quantity: 20 μ g

Exposure time: 60 s

Predicted MW: 38 kDa

Observed MW: 43 kDa



Tissue: Human tonsil

Section type: Formalin-fixed &

Paraffin-embedded section

Retrieval method: High temperature and high

pressure

Retrieval buffer: Tris/EDTA buffer, pH 9.0

Primary Ab dilution: 1:100

Primary Ab incubation condition: 1 hour at
room temperature

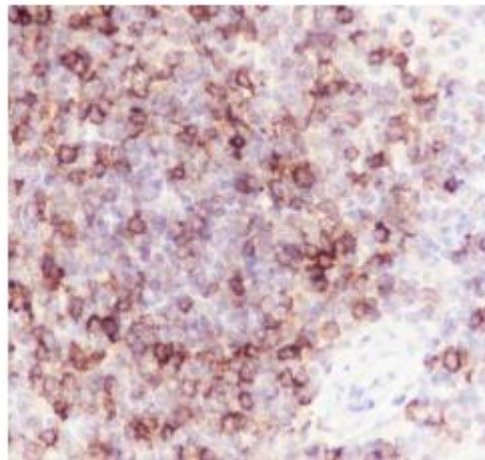
Secondary Ab: Anti-Rabbit and Mouse

Polymer HRP (Ready to use)

Counter stain: Hematoxylin (Blue)

Comment: Color brown is the positive signal for

SLM-60660R



Tissue: Human spleen

Section type: Formalin-fixed &

Paraffin-embedded section

Retrieval method: High temperature and high

pressure

Retrieval buffer: Tris/EDTA buffer, pH 9.0

Primary Ab dilution: 1:100

Primary Ab incubation condition: 1 hour at
room temperature

Secondary Ab: Anti-Rabbit and Mouse

Polymer HRP (Ready to use)

Counter stain: Hematoxylin (Blue)

Comment: Color brown is the positive signal for

SLM-60660R