

Rabbit Anti-phospho-TBK1 (Ser172)antibody

SLM-60659R

Product Name	phospho-TBK1 (Ser172)
Chinese Name	磷酸化 NF-κB 活化激酶 Recombinant rabbit monoclonal anti EC 2.7.11.1; FLJ11330; NAK; NF kappa B activating kinase; NF kB activating kinase; NF-kappa-B-activating kinase; Serine/threonine protein kinase TBK 1; Serine/threonine protein kinase TBK1;
Alias	Serine/threonine protein kinase TBK1; Serine/threonine-protein kinase TBK1; T2K; TANK binding kinase 1; TANK-binding kinase 1; TBK 1; TBK1_HUMAN.
Research Area	Signal transduction
Immunogen Species	Rabbit
Clonality	Monoclonal
Clone NO.	R7D3
React Species	Human WB=1:500-2000
Applications	not yet tested in other applications. optimal dilutions/concentrations should be determined by the end user.
Theoretical molecular weight	84kDa
Cellular localization	The nucleus cytoplasmic
Form	Liquid
Concentration	1mg/ml
immunogen	KLH conjugated synthetic peptide derived from human phospho-TBK1 (Ser172)
Lsotype	IgG
Purification	affinity purified by Protein A
Buffer Solution	1M TBS(pH7.4) with 1% BSA, 3% Proclin300 and 50% Glycerol.
Storage	Shipped at 4°C. Store at -20 °C for one year. Avoid repeated freeze/thaw cycles.
Attention	This product as supplied is intended for research use only, not for use in human, therapeutic or diagnostic applications.

PubMed

[PubMed](#)

The NF-kappa-B (NFKB) complex of proteins is inhibited by I-kappa-B (IKB) proteins, which inactivate NFKB by trapping it in the cytoplasm. Phosphorylation of serine residues on the IKB proteins by IKB kinases marks them for destruction via the ubiquitination pathway, thereby allowing activation and nuclear translocation of the NFKB complex. The protein encoded by this gene is similar to IKB kinases and can mediate NFKB activation in response to certain growth factors. The protein is also an important kinase for antiviral innate immunity response. [provided by RefSeq, Sep 2021]

Subcellular Location:

Nucleus.

SWISS:

Q9UHD2

Product Detail

Gene ID:

29110

Database links:

[Entrez Gene: 29110](#) Human

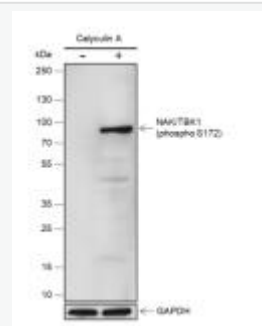
[Entrez Gene: 56480](#) Mouse

[Entrez Gene: 299827](#) Rat

[SwissProt: Q9UHD2](#) Human

[SwissProt: Q9WUN2](#) Mouse

Product Picture



Blocking buffer: 5% NFDN/TBST

Primary ab dilution: 1:2000

Primary ab incubation condition: 2 hours at
room temperature

Secondary ab: Goat Anti-Rabbit IgG H&L
(HRP)

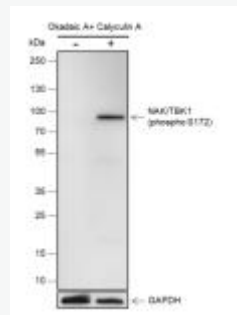
Lysate: (-): C6, (+): C6+Calyculin A(100nM,
30min)

Protein loading quantity: 20 μ g

Exposure time: 60 s

Predicted MW: 84 kDa

Observed MW: 84 kDa



Blocking buffer: 5% NFDM/TBST

Primary ab dilution: 1:2000

Primary ab incubation condition: 2 hours at
room temperature

Secondary ab: Goat Anti-Rabbit IgG H&L
(HRP)

Lysate:(-): HeLa, (+): HeLa+ Okadaic A+

Calyculin A (100 nM, 60min)

Protein loading quantity: 20 μ g

Exposure time: 60 s

Predicted MW: 84 kDa

Observed MW: 84 kDa