

Rabbit Anti-SF3B3 antibody

SLM-60658R

Product Name	SF3B3
Chinese Name	选择性剪接因子 3B 亚基 3Recombinant rabbit monoclonal anti KIAA0017; Pre mRNA splicing factor SF3b 130 kDa subunit; Pre-mRNA-splicing factor SF3b 130 kDa subunit; RSE1; SAP 130; SAP130; SF3b130; SF3B3_HUMAN; Spliceosome associated protein 130; Spliceosome-associated protein 130; Splicing factor 3b subunit 3 130kD; Splicing factor 3B subunit 3;
Alias	
Research Area	Signal transduction
Immunogen Species	Rabbit
Clonality	Monoclonal
Clone NO.	R7F1
React Species	Human,Mouse,Rat WB=1:500-1000,IHC-P=1:200-1000,IHC-F=1:200-1000,IF=1:200-1000 (Paraffin sections need antigen repair) not yet tested in other applications. optimal dilutions/concentrations should be determined by the end user.
Applications	
Theoretical molecular weight	136kDa
Cellular localization	The nucleus cytoplasmic
Form	Liquid
Concentration	1mg/ml
immunogen	KLH conjugated synthetic peptide derived from human SF3B3
Lsotype	IgG
Purification	affinity purified by Protein A
Buffer Solution	1M TBS(pH7.4) with 1% BSA, 3% Proclin300 and 50% Glycerol.
Storage	Shipped at 4°C. Store at -20 °C for one year. Avoid repeated freeze/thaw cycles.
Attention	This product as supplied is intended for research use only, not for use in human, therapeutic or diagnostic applications.

PubMed

[PubMed](#)

This gene encodes subunit 3 of the splicing factor 3b protein complex. Splicing factor 3b, together with splicing factor 3a and a 12S RNA unit, forms the U2 small nuclear ribonucleoproteins complex (U2 snRNP). The splicing factor 3b/3a complex binds pre-mRNA upstream of the intron's branch site in a sequence independent manner and may anchor the U2 snRNP to the pre-mRNA. Splicing factor 3b is also a component of the minor U12-type spliceosome. Subunit 3 has also been identified as a component of the STAGA (SPT3-TAF(II)31-GCN5L acetylase) transcription coactivator-HAT (histone acetyltransferase) complex, and the TFTC (TATA-binding-protein-free TAF(II)-containing complex). These complexes may function in chromatin modification, transcription, splicing, and DNA repair. [provided by RefSeq, Jul 2008]

Subcellular Location:
Nucleus.

Product Detail

SWISS:
Q15393

Gene ID:
23450

Database links:

[Entrez Gene: 23450](#) Human

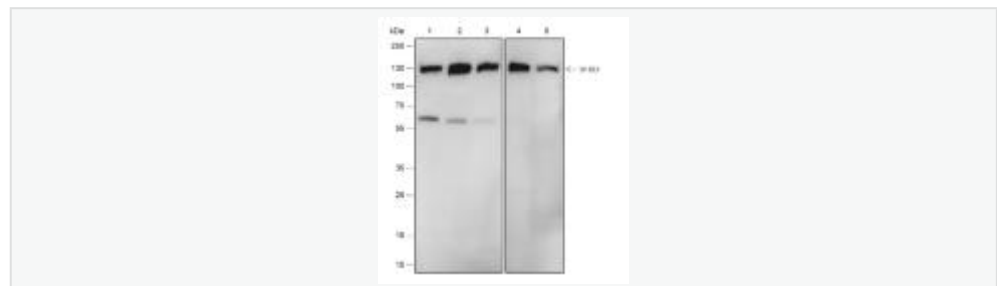
[Entrez Gene: 101943](#) Mouse

[Entrez Gene: 292019](#) Rat

[SwissProt: Q15393](#) Human

[SwissProt: Q921M3](#) Mouse

Product Picture



Blocking buffer: 5% NFDM/TBST

Primary Ab dilution: 1:1000

Primary Ab incubation condition: 2 hours at
room temperature

Secondary Ab: Goat Anti-Rabbit IgG H&L
(HRP)

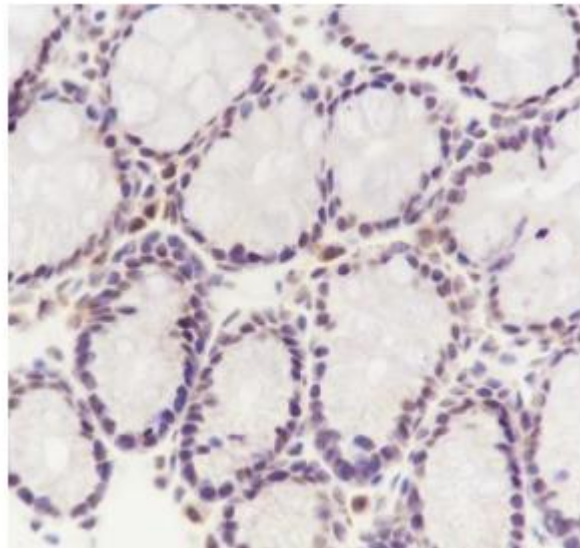
Lysate: 1: HeLa, 2: Jurkat, 3: HEK-293, 4:
RAW 264.7, 5: C6

Protein loading quantity: 20 μ g

Exposure time: 60 s

Predicted MW: 135 kDa

Observed MW: 135 kDa



Tissue: Mouse colon

Section type: Formalin-fixed & Paraffin

embedded section

Retrieval method: High temperature and high

pressure

Retrieval buffer: Tris/EDTA buffer, pH 9.0

Primary Ab dilution: 1:2000

Primary Ab incubation condition: 1 hour at

room temperature

Secondary Ab: Anti-Rabbit and Mouse

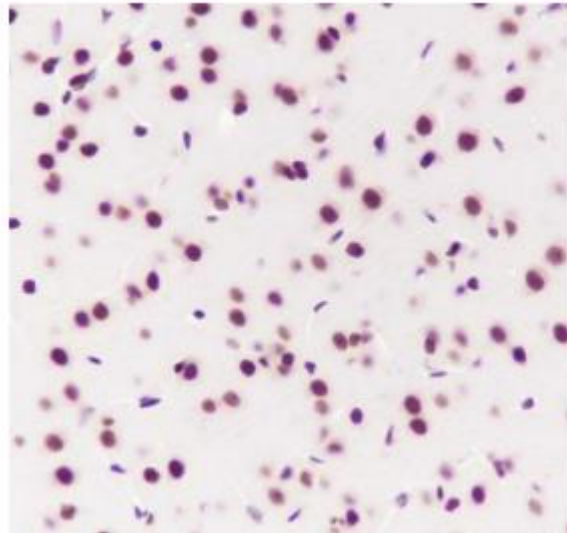
Polymer HRP (Ready to use)

Counter stain:

Hematoxylin (Blue)

Comment: Color brown is the positive signal

for SLM-60658R



Tissue: Rat cerebrum

Section type: Formalin-fixed & Paraffin
embedded section

Retrieval method: High temperature and high
pressure

Retrieval buffer: Tris/EDTA buffer, pH 9.0

Primary Ab dilution: 1:1000

Primary Ab incubation condition: 1 hour at
room temperature

Secondary Ab: Anti-Rabbit and Mouse

Polymer HRP (Ready to use)

Counter stain: Hematoxylin (Blue)

Comment: Color brown is the positive signal



SunLong Biotech Co.,LTD
Tel: 0086-571-56623320 Fax:0086-571-56623318
E-mail:sales@sunlongbiotech.com
www.sunlongbiotech.com

for SLM-60658R