

Rabbit Anti-phospho-SIRT1 (Ser27)antibody

SLM-60654R

Product Name	phospho-SIRT1 (Ser27)
Chinese Name	磷酸化沉默调节蛋白 1Recombinant rabbit monoclonal anti
Alias	SIR2L1; NAD-dependent protein deacetylase sirtuin-1; EC:2.3.1.286; hSIRT1; NAD-dependent protein deacetylase sirtuin-1; Regulatory protein SIR2 homolog 1; SIR2-like protein 1 (hSIR2); SirtT1 75 kDa fragment; SIR1_HUMAN;
Research Area	Signal transduction
Immunogen Species	Rabbit
Clonality	Monoclonal
Clone NO.	R4C3
React Species	Human
Applications	WB=1:500-2000,ICC/IF=1:50-100 (Paraffin sections need antigen repair) not yet tested in other applications. optimal dilutions/concentrations should be determined by the end user.
Theoretical molecular weight	81kDa
Cellular localization	The nucleus cytoplasmic
Form	Liquid
Concentration	1mg/ml
immunogen	KLH conjugated synthetic peptide derived from human phospho-SIRT1 (Ser27)
Lsotype	IgG
Purification	affinity purified by Protein A
Buffer Solution	1M TBS(pH7.4) with 1% BSA, 3% Proclin300 and 50% Glycerol.
Storage	Shipped at 4°C. Store at -20 °C for one year. Avoid repeated freeze/thaw cycles.
Attention	This product as supplied is intended for research use only, not for use in human, therapeutic or diagnostic applications.
PubMed	PubMed

This gene encodes a member of the sirtuin family of proteins, homologs to the yeast Sir2 protein. Members of the sirtuin family are characterized by a sirtuin core domain and grouped into four classes. The functions of human sirtuins have not yet been determined; however, yeast sirtuin proteins are known to regulate epigenetic gene silencing and suppress recombination of rDNA. Studies suggest that the human sirtuins may function as intracellular regulatory proteins with mono-ADP-ribosyltransferase activity. The protein encoded by this gene is included in class I of the sirtuin family. Alternative splicing results in multiple transcript variants. [provided by RefSeq, Dec 2008]

Subcellular Location:

Nucleus, PML body. Cytoplasm. Note=Recruited to the nuclear bodies via its interaction with PML. Colocalized with APEX1 in the nucleus. May be found in nucleolus, nuclear euchromatin, heterochromatin and inner membrane. Shuttles between nucleus and cytoplasm.
SirtT1 75 kDa fragment: Cytoplasm. Mitochondrion.

Product Detail

Tissue Specificity:

Widely expressed.

SWISS:

Q96EB6

Gene ID:

23411

Database links:

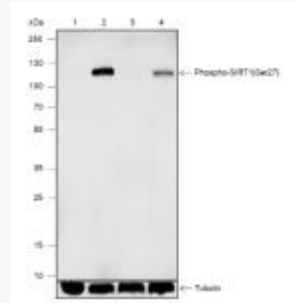
[Entrez Gene: 23411](#) Human

[Entrez Gene: 93759](#) Mouse

[Entrez Gene: 309757](#) Rat

[SwissProt: Q96EB6](#) Human

[SwissProt: Q923E4](#) Mouse



Blocking buffer: 5% NFDN/TBST

Primary Ab dilution: 1:1000

Primary Ab incubation condition: 2 hours at
room temperature

Secondary Ab: Goat Anti-Rabbit IgG H&L
(HRP)

Lysate: 1-2: HEK-293+CA (-) (+), 3-4:

Jurkat+CA(-) (+)

Protein loading quantity: 20 μ g

Exposure time: 30 s

Predicted MW: 82 kDa

Observed MW: 120 kDa

Product Picture