

## Rabbit Anti-HES5 antibody

SLM-60648R

<b>Product Name</b>	HES5
<b>Chinese Name</b>	发状分裂相关增强子-5Recombinant rabbit monoclonal anti
<b>Alias</b>	BHLHB38; Transcription factor HES-5; Class B basic helix-loop-helix protein 38 (bHLHb38); Hairy and enhancer of split 5; HES 5; HES5 protein; MGI:104876; HES5_HUMAN.
<b>Research Area</b>	Signal transduction Stem cells transcriptional regulatory factor G protein-coupled receptor
<b>Immunogen Species</b>	Rabbit
<b>Clonality</b>	Monoclonal
<b>Clone NO.</b>	R4G8
<b>React Species</b>	Human,Mouse,Rat
<b>Applications</b>	WB=1:500-2000,IHC-P=1:100-500,IHC-F=1:100-500,IF=1:100-500 not yet tested in other applications. optimal dilutions/concentrations should be determined by the end user.
<b>Theoretical molecular weight</b>	18kDa
<b>Cellular localization</b>	cytoplasmic
<b>Form</b>	Liquid
<b>Concentration</b>	1mg/ml
<b>immunogen</b>	KLH conjugated synthetic peptide derived from human HES5
<b>Lsotype</b>	IgG
<b>Purification</b>	affinity purified by Protein A
<b>Buffer Solution</b>	1M TBS(pH7.4) with 1% BSA, 3% Proclin300 and 50% Glycerol.
<b>Storage</b>	Shipped at 4°C. Store at -20 °C for one year. Avoid repeated freeze/thaw cycles.
<b>Attention</b>	This product as supplied is intended for research use only, not for use in human, therapeutic or diagnostic applications.
<b>PubMed</b>	<a href="#">PubMed</a>
<b>Product Detail</b>	This gene encodes a member of a family of basic helix-loop-helix

transcriptional repressors. The protein product of this gene, which is activated downstream of the Notch pathway, regulates cell differentiation in multiple tissues. Disruptions in the normal expression of this gene have been associated with developmental diseases and cancer. [provided by RefSeq, Dec 2008]

**Subcellular Location:**

Nucleus.

**Tissue Specificity:**

Expressed in fetal heart and brain tumors.

**SWISS:**

Q5TA89

**Gene ID:**

388585

**Database links:**

[Entrez Gene: 388585](#) Human

[Entrez Gene: 15208](#) Mouse

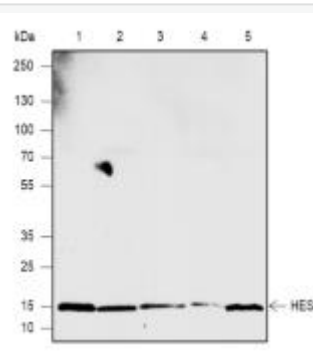
[Entrez Gene: 79225](#) Rat

[SwissProt: Q5TA89](#) Human

[SwissProt: P70120](#) Mouse

[SwissProt: Q03062](#) Rat

**Product Picture**



Blocking buffer: 5% NFDN/TBST

Primary Ab dilution: 1:50000

Primary Ab incubation condition: 2 hours at  
room temperature

Secondary Ab: Goat Anti-Rabbit IgG H&L  
(HRP)

Lysate: 1: Human kidney cancer, 2: Human  
liver, 3: Human lung, 4: Mouse liver, 5: Rat liver

Protein loading quantity: 20 ug

Exposure time: 60 s

Predicted MW: 18 kDa

Observed MW: 15 kDa