



Rabbit Anti-RAB7A antibody

SLM-60647R

Product Name RAB7A**Chinese Name** RAS 癌基因相关蛋白 RAB7Recombinant rabbit monoclonal anti**Alias** CMT2B; Member RAS oncogene family; PSN; RAB7A; RAB7B; Ras associated protein RAB7; protein Rab7; Ras related protein Rab7a; RAB7A_HUMAN.**Research Area** Tumour Cell biology Signal transduction G protein-coupled receptor Cell type markers**Immunogen Species** Rabbit**Clonality** Monoclonal**Clone NO.** R2B4**React Species** Human,Mouse,Rat**Applications** WB=1:500-2000,IHC-P=1:100-500,IHC-F=1:100-500,ICC/IF=1:50-200,IF=1:100-500,Flow-Cy
(Paraffin sections need antigen repair)
not yet tested in other applications.
optimal dilutions/concentrations should be determined by the end user.**Theoretical molecular weight** 23kDa**Cellular localization** cytoplasmic**Form** Liquid**Concentration** 1mg/ml**immunogen** KLH conjugated synthetic peptide derived from human RAB7A**Lsotype** IgG**Purification** affinity purified by Protein A**Buffer Solution** 1M TBS(pH7.4) with 1% BSA, 3% Proclin300 and 50% Glycerol.**Storage** Shipped at 4°C. Store at -20 °C for one year. Avoid repeated freeze/thaw cycles.**Attention** This product as supplied is intended for research use only, not for use in human, therapeutic or diagnostic applications.**PubMed** [PubMed](#)



RAB family members are small, RAS-related GTP-binding proteins that are important regulators of vesicle transport. Each RAB protein targets multiple proteins that act in exocytic / endocytic pathways. This gene encodes a RAB family member that regulates vesicle traffic in the late endosomes and also from late endosomes to lysosomes. This encoded protein is also involved in the cellular vacuolation of the cytotxin of Helicobacter pylori. Mutations at highly conserved amino acid residues in this gene lead to some forms of Charcot-Marie-Tooth (CMT) type 2 neuropathies. [provided by RefSeq, Jul 2008]

Subcellular Location:

Late endosome. Lysosome. Cytoplasmic vesicle, phagosome. Melanosome. Note=Identified by mass spectrometry in melanosome fractions from stage I to stage IV.

Tissue Specificity:

Widely expressed; high expression found in skeletal muscle.

SWISS:

P51149

**Product
Detail**

Gene ID:

7879

Database links:

[Entrez Gene: 7879](#) Human

[Entrez Gene: 19349](#) Mouse

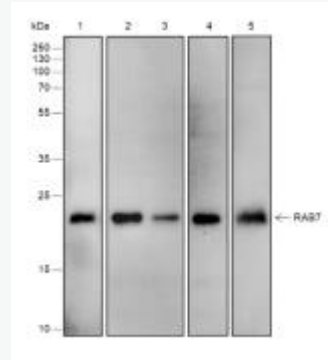
[Entrez Gene: 29448](#) Rat

[Omim: 602298](#) Human

[SwissProt: P51149](#) Human

[SwissProt: P51150](#) Mouse

[SwissProt: P09527](#) Rat



**Product
Picture**

Blocking buffer: 5% NFDM/TBST

Primary Ab dilution: 1:1000

Primary Ab incubation condition: 2 hours at
room temperature

Secondary Ab: Goat Anti-Rabbit IgG H&L
(HRP)

Lysate: 1: HeLa, 2: A431, 3: MCF-7, 4:

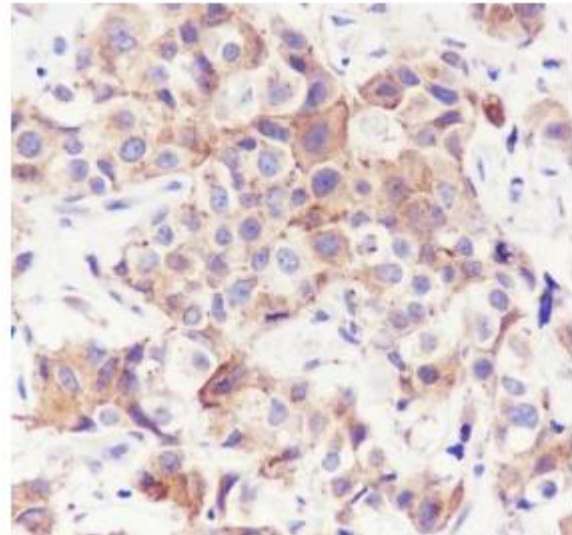
NIH/3T3, 5: C6

Protein loading quantity: 20 ug

Exposure time: 60 s

Predicted MW: 23 kDa

Observed MW: 23 kDa



Tissue: Human breast carcinoma

Section type: Formalin-fixed & Paraffin
embedded section

Retrieval method: High temperature and high
pressure

Retrieval buffer: Tris/EDTA buffer, pH 9.0

Primary Ab dilution: 1:100

Primary Ab incubation condition: 1 hour at
room temperature

Secondary Ab: Anti-Rabbit and Mouse

Polymer HRP (Ready to use)

Counter stain: Hematoxylin (Blue)

Comment: Color brown is the positive signal



SunLong Biotech Co.,LTD
Tel: 0086-571-56623320 Fax:0086-571-56623318
E-mail:sales@sunlongbiotech.com
www.sunlongbiotech.com

for SLM-60647R