

Rabbit Anti-DUSP5 antibody

SLM-60646R

Product Name	DUSP5
Chinese Name	双特异性磷酸酶 5Recombinant rabbit monoclonal anti
Alias	Dual specificity protein phosphatase 5; Dual specificity protein phosphatase hVH 3; Dual specificity protein phosphatase hVH3; DUSP 5; DUSP; HVH 3; HVH3; Serine/threonine specific protein phosphatase; VH 3; VH1 like phosphatase 3; VH3; DUS5_HUMAN.
Research Area	Tumour Cell biology Neurobiology Signal transduction Apoptosis Kinases and Phosphatases
Immunogen Species	Rabbit
Clonality	Monoclonal
Clone NO.	R1A10
React Species	Human,Mouse(predicted:Rat) WB=1:500-2000,IHC-P=1:100-500,IHC-F=1:200-500,IF=1:100-500 (Paraffin sections need antigen repair)
Applications	not yet tested in other applications. optimal dilutions/concentrations should be determined by the end user.
Theoretical molecular weight	42kDa
Form	Liquid
Concentration	1mg/ml
immunogen	KLH conjugated synthetic peptide derived from human DUSP5
Lsotype	IgG
Purification	affinity purified by Protein A
Buffer Solution	1M TBS(pH7.4) with 1% BSA, 3% Proclin300 and 50% Glycerol.
Storage	Shipped at 4°C. Store at -20 °C for one year. Avoid repeated freeze/thaw cycles.
Attention	This product as supplied is intended for research use only, not for use in human, therapeutic or diagnostic applications.
PubMed	PubMed
Product Detail	The protein encoded by this gene is a member of the dual specificity protein

phosphatase subfamily. These phosphatases inactivate their target kinases by dephosphorylating both the phosphoserine/threonine and phosphotyrosine residues. They negatively regulate members of the mitogen-activated protein (MAP) kinase superfamily (MAPK/ERK, SAPK/JNK, p38), which are associated with cellular proliferation and differentiation. Different members of the family of dual specificity phosphatases show distinct substrate specificities for various MAP kinases, different tissue distribution and subcellular localization, and different modes of inducibility of their expression by extracellular stimuli. This gene product inactivates ERK1, is expressed in a variety of tissues with the highest levels in pancreas and brain, and is localized in the nucleus. [provided by RefSeq, Jul 2008]

Subcellular Location:

Nuclear.

SWISS:

Q16690

Gene ID:

1847

Database links:

[Entrez Gene: 1847](#) Human

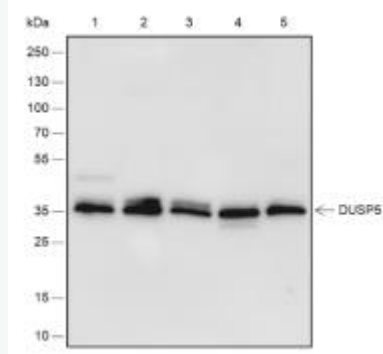
[Entrez Gene: 240672](#) Mouse

[Entrez Gene: 171109](#) Rat

[Omim: 603069](#) Human

[SwissProt: Q16690](#) Human

[SwissProt: O54838](#) Rat



Product Picture

Blocking buffer: 5% NFDM/TBST

Primary Ab dilution: 1:1000

Primary Ab incubation condition: 2 hours at
room temperature

Secondary Ab: Goat Anti-Rabbit IgG H&L
(HRP)

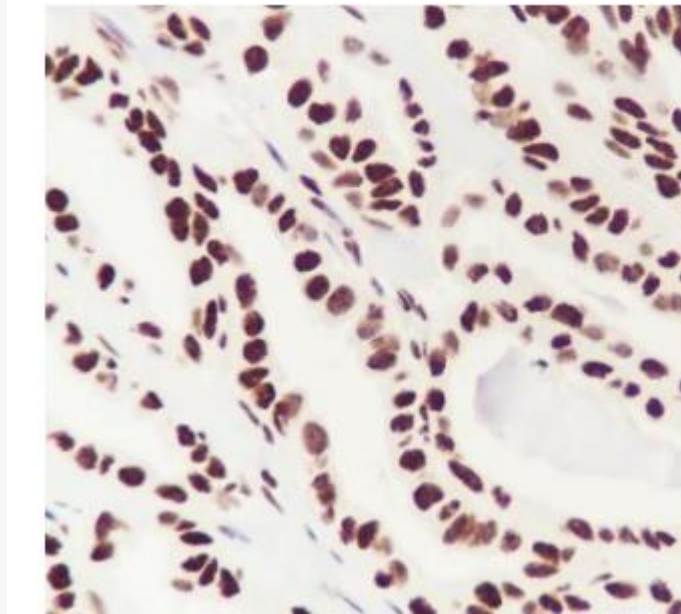
Lysate: 1: HCT-116, 2: Raji, 3: K562, 4: C2C12,
5: PC12

Protein loading quantity: 20 ug

Exposure time: 60 s

Predicted MW: 42 kDa

Observed MW: 42 kDa



Tissue: Human papillary thyroid carcinoma

Section type: Formalin-fixed &

Paraffin-embedded section

Retrieval method: High temperature and high pressure

Retrieval buffer: Tris/EDTA buffer, pH 9.0

Primary Ab dilution: 1:1000

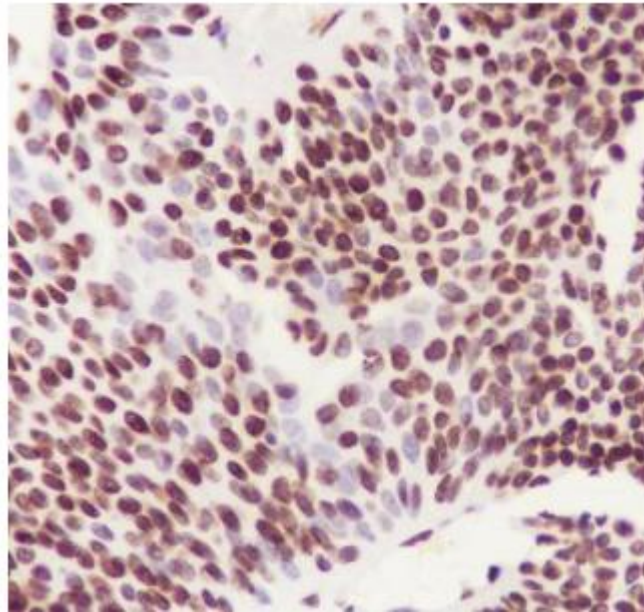
Primary Ab incubation condition: 1 hour at room temperature

Secondary Ab: Anti-Rabbit and Mouse

Polymer HRP (Ready to use)

Counter stain: Hematoxylin (Blue)

Comment: Color brown is the positive signal for
SLM-60646R



Tissue: Human bladder carcinoma

Section type: Formalin-fixed &

Paraffin-embedded section

Retrieval method: High temperature and high
pressure

Retrieval buffer: Tris/EDTA buffer, pH 9.0

Primary Ab dilution: 1:1000

Primary Ab incubation condition: 1 hour at
room temperature

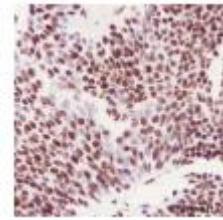
Secondary Ab: Anti-Rabbit and Mouse

Polymer HRP (Ready to use)

Counter stain: Hematoxylin (Blue)

Comment: Color brown is the positive signal for

SLM-60646R



Tissue: Human bladder carcinoma

Section type: Formalin-fixed &

Paraffin-embedded section

Retrieval method: High temperature and high pressure

Retrieval buffer: Tris/EDTA buffer, pH 9.0

Primary Ab dilution: 1:1000

Primary Ab incubation condition: 1 hour at room temperature

Secondary Ab: Anti-Rabbit and Mouse

Polymer HRP (Ready to use)

Counter stain: Hematoxylin (Blue)



SunLong Biotech Co.,LTD
Tel: 0086-571-56623320 Fax:0086-571-56623318
E-mail:sales@sunlongbiotech.com
www.sunlongbiotech.com

Comment: Color brown is the positive signal for