

Rabbit Anti-phospho-AKT (Thr308)antibody

SLM-60645R

Product Name	phospho-AKT (Thr308)
Chinese Name	磷酸化蛋白激酶 BRecombinant rabbit monoclonal anti AKT1 (phospho T308); AKT2 (phospho T309); AKT3 (phospho T305); p-AKT1 (phospho T308); p-AKT2 (phospho T309); p-AKT3 (phospho T305); AKT 1; AKT; AKT1; AKT-1; AKT1_HUMAN; AKT 2; AKT2; AKT-2; AKT2_HUMAN; AKT 3; AKT3; AKT-3; AKT3_HUMAN; C AKT; cAKT; MGC9965; MGC99656; Oncogene AKT1; PKB; PKB alpha;
Alias	PKB-ALPHA; PKB beta; PKB gamma; PRKBA; Protein Kinase B Alpha; Protein kinase B; Proto-oncogene c-Akt; RAC Alpha; RAC alpha serine/threonine protein kinase; RAC; RAC PK Alpha; Rac protein kinase alpha; RAC Serine/Threonine Protein Kinase; RAC-alpha serine/threonine-protein kinase; RAC-PK-alpha; v akt murine thymoma viral oncogene homolog 1; vAKT Murine Thymoma Viral Oncogene Homolog 1.
Immunogen Species	Rabbit
Clonality	Monoclonal
Clone NO.	R3F4
React Species	Mouse WB=1:500-2000
Applications	not yet tested in other applications. optimal dilutions/concentrations should be determined by the end user.
Theoretical molecular weight	56kDa
Form	Liquid
Concentration	1mg/ml
immunogen	KLH conjugated synthetic peptide derived from human phospho-AKT (Thr308)
Lsotype	IgG
Purification	affinity purified by Protein A
Buffer Solution	1M TBS(pH7.4) with 1% BSA, 3% Proclin300 and 50% Glycerol.
Storage	Shipped at 4°C. Store at -20 °C for one year. Avoid repeated freeze/thaw cycles.

Attention

This product as supplied is intended for research use only, not for use in human, therapeutic or diagnostic applications.

PubMed

[PubMed](#)

This gene is a putative oncogene encoding a protein belonging to a subfamily of serine/threonine kinases containing SH2-like (Src homology 2-like) domains. The gene was shown to be amplified and overexpressed in 2 of 8 ovarian carcinoma cell lines and 2 of 15 primary ovarian tumors. Overexpression contributes to the malignant phenotype of a subset of human ductal pancreatic cancers. The encoded protein is a general protein kinase capable of phosphorylating several known proteins. [provided by RefSeq, Jul 2008]

Subcellular Location:

Cytoplasm. Nucleus. Cell membrane; Peripheral membrane protein.
Note=Localizes within both nucleus and cytoplasm of proliferative primary myoblasts and mostly within the nucleus of differentiated primary myoblasts. By virtue of the N-terminal PH domain, is recruited to sites of the plasma membrane containing increased PI(3,4,5)P3 or PI(3,4)P2.

Post-translational modifications:

Note=Defects in AKT2 are a cause of susceptibility to breast cancer (BC). AKT2 promotes metastasis of tumor cells without affecting the latency of tumor development. With AKT3, plays also a pivotal role in the biology of glioblastoma.

Product Detail

Diabetes mellitus, non-insulin-dependent (NIDDM) [MIM:125853]: A multifactorial disorder of glucose homeostasis caused by a lack of sensitivity to the body's own insulin. Affected individuals usually have an obese body habitus and manifestations of a metabolic syndrome characterized by diabetes, insulin resistance, hypertension and hypertriglyceridemia. The disease results in long-term complications that affect the eyes, kidneys, nerves, and blood vessels. Note=The disease is caused by mutations affecting the gene represented in this entry.

Hypoinsulinemic hypoglycemia with hemihypertrophy (HIHGHH) [MIM:240900]: A disorder characterized by hypoglycemia, low insulin levels, low serum levels of ketone bodies and branched-chain amino acids, left-sided hemihypertrophy, neonatal macrosomia, reduced consciousness and hypoglycemic seizures. Note=The disease is caused by mutations affecting the gene represented in this entry.

Similarity:

Belongs to the protein kinase superfamily. AGC Ser/Thr protein kinase family. RAC subfamily.

Contains 1 AGC-kinase C-terminal domain.

Contains 1 PH domain.
Contains 1 protein kinase domain.

SWISS:
P31751

Gene ID:
208

Database links:

[Entrez Gene: 208](#) Human

[Entrez Gene: 11652](#) Mouse

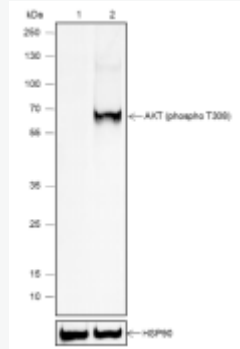
[Entrez Gene: 25233](#) Rat

[SwissProt: P31751](#) Human

[SwissProt: Q60823](#) Mouse

[SwissProt: P47197](#) Rat

Product Picture



Blocking buffer: 5% NFDM/TBST

Primary Ab dilution: 1:1000

Primary Ab incubation condition: 2 hours at
room temperature

Secondary Ab: Goat Anti-Rabbit IgG H&L

(HRP)

Lysate: 1: NIH/3T3, 2: NIH/3T3 + PDGF (100
ng/mL, 15 min)

Protein loading quantity: 20 ug

Exposure time: 60 s

Predicted MW: 56 kDa

Observed MW: 60 kDa