

Rabbit Anti-Lysozyme antibody

SLM-60643R

Product Name Lysozyme

Chinese Name 溶菌酶 Recombinant rabbit monoclonal anti

Alias 1 4 beta n acetylmuramidase c; 14 beta N acetylmuramidase; 14 beta N acetylmuramidase C; EC 3.2.1.17; lysosyme; Lysozyme C; Lysozyme C precursor; Lyz; LZM; Muramidase; LYSC_HUMAN.

Immunogen Species Rabbit

Clonality Monoclonal

Clone NO. 8F12

React Species Human,Mouse

Applications WB=1:500-2000,IHC-P=1:100-500,IHC-F=1:100-500,IF=1:100-500,ICC/IF=1:50-200
(Paraffin sections need antigen repair)
not yet tested in other applications.
optimal dilutions/concentrations should be determined by the end user.

Theoretical molecular weight 17kDa

Detection molecular weight 13 kDa

Cellular localization Secretory protein

Form Liquid

Concentration 1mg/ml

immunogen Recombination human Lysozyme: 1-130/130

Lsotype IgG

Purification affinity purified by Protein A

Buffer Solution 1M TBS(pH7.4) with 1% BSA, 3% Proclin300 and 50% Glycerol.

Storage Shipped at 4°C. Store at -20 °C for one year. Avoid repeated freeze/thaw cycles.

Attention This product as supplied is intended for research use only, not for use in human,

therapeutic or diagnostic applications.

PubMed

[PubMed](#)

This gene encodes human lysozyme, whose natural substrate is the bacterial cell wall peptidoglycan (cleaving the beta[1-4]glycosidic linkages between N-acetylmuramic acid and N-acetylglucosamine). Lysozyme is one of the antimicrobial agents found in human milk, and is also present in spleen, lung, kidney, white blood cells, plasma, saliva, and tears. The protein has antibacterial activity against a number of bacterial species. Missense mutations in this gene have been identified in heritable renal amyloidosis. [provided by RefSeq, Oct 2014]

Subcellular Location:

Secreted.

**Product
Detail**

SWISS:

P61626

Gene ID:

4069

Database links:

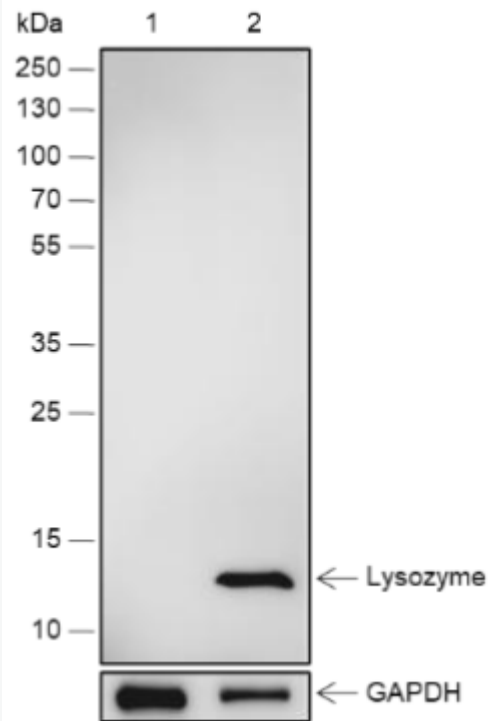
[Entrez Gene: 4069](#) Human

[Omim: 153450](#) Human

[SwissProt: P61626](#) Human

[Unigene: 524579](#) Human

**Product
Picture**



Blocking buffer: 5% NFDN/TBST

Primary Ab dilution: 1:2000

Primary Ab incubation condition: 2 hours at
room temperature

Secondary Ab: Goat Anti-Rabbit IgG H&L
(HRP)

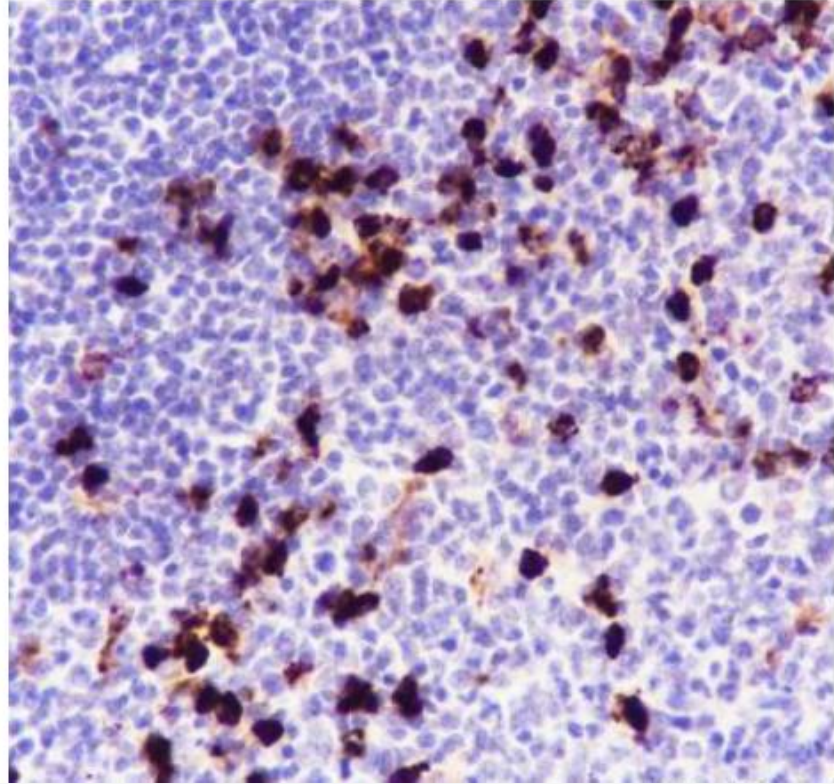
Lysate: 1: HeLa (Negative control), 2: THP-1

Protein loading quantity: 20 ug

Exposure time: 60 s

Predicted MW: 17 kDa

Observed MW: 13 kDa



Tissue: Human tonsil

Section type: Formalin-fixed & Paraffin

-embedded section

Retrieval method: High temperature and high
pressure

Retrieval buffer: Tris/EDTA buffer, pH 9.0

Primary Ab dilution: 1:1000

Primary Ab incubation condition: 1 hour at

room temperature

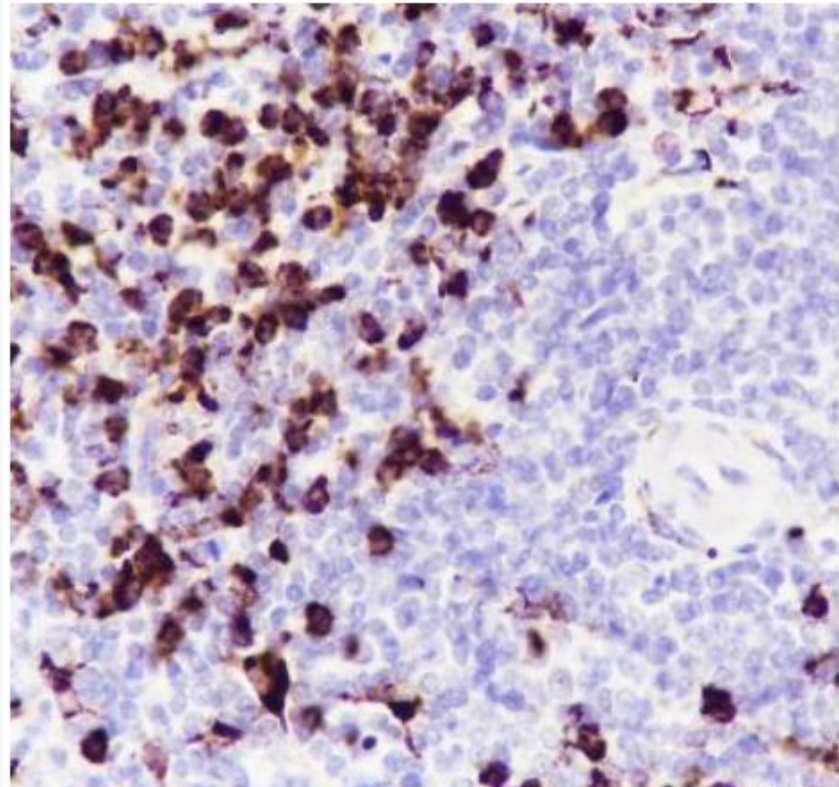
Secondary Ab: Anti-Rabbit and Mouse

Polymer HRP (Ready to use)

Counter stain: Hematoxylin (Blue)

Comment: Color brown is the positive signal for

SLM-60643R



Tissue: Human spleen

Section type: Formalin-fixed & Paraffin

-embedded section

Retrieval method: High temperature and high

pressure

Retrieval buffer: Tris/EDTA buffer, pH 9.0

Primary Ab dilution: 1:1000

Primary Ab incubation condition: 1 hour at

room temperature

Secondary Ab: Anti-Rabbit and Mouse

Polymer HRP (Ready to use)

Counter stain: Hematoxylin (Blue)

Comment: Color brown is the positive signal for

SLM-60643R